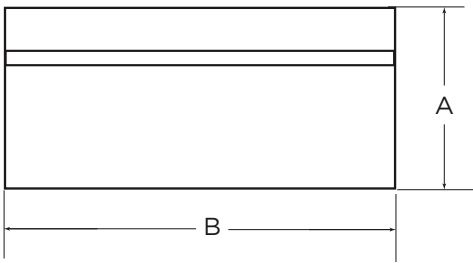


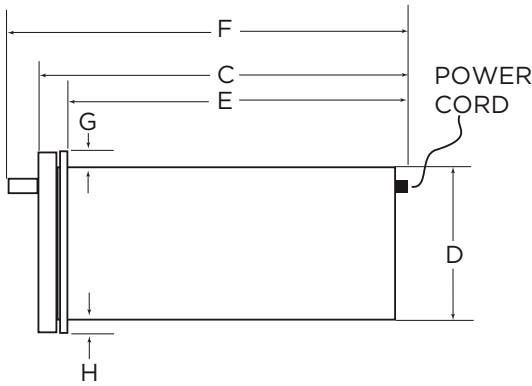
WARMING DRAWER DIMENSIONS

OD30WDX1

DIMENSIONS (FRONT VIEW)



DIMENSIONS (SIDE VIEW)

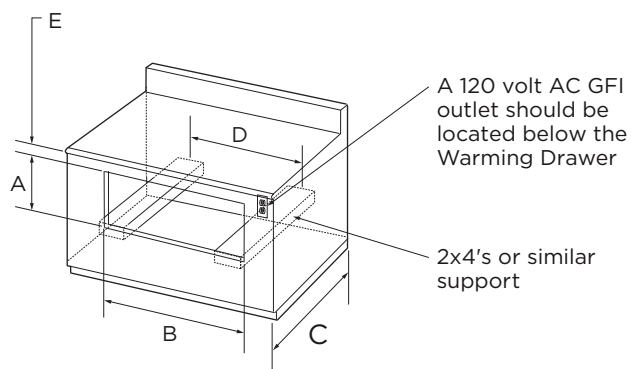


DIMENSIONS INCHES (MM)		OD30WDX1	
A	Overall height	10 ½"	(267)
B	Overall width	29 1/16"	(754)
C	Overall depth (without handle)	25 1/16"	(636)
D	Height of chassis	9 ¾"	(248)
E	Depth of chassis	23 ½"	(597)
F	Overall depth of product including handles	28 3/16"	(716)
G	Height from top of chassis to top of front panel	½"	(13)
H	Height of bottom of chassis to bottom of front panel	¼"	(7)

Product dimensions and specifications are listed as a guide only. For complete installation instructions and specifications, refer to the product Use & Care Guide/Installation Instructions available at www.fisherpaykel.com

WARMING DRAWER CABINET DIMENSIONS

OD30WDX1



DIMENSIONS INCHES (MM)

	DOUBLE Wall Oven and Warming Drawer		SINGLE Wall Oven, Microwave & Warming Drawer	
A Height of cut out	10 ± 1/16"	(254)	10 ± 1/16"	(254)
B Width of cut out	25 3/4 ± 1/16"	(654)	25 3/4 ± 1/16"	(654)
C Min. distance from face of cabinet to rear wall	≥ 24"	(610)	≥ 24"	(610)
D Center-to-center distance for 2 x 4 support boards	20"	(508)	20"	(508)
E Min. to bottom of countertop	1 1/2"	(38)	1 1/2"	(38)

Product dimensions and specifications are listed as a guide only. For complete installation instructions and specifications, refer to the product Use & Care Guide/Installation Instructions available at www.fisherpaykel.com

Fisher & Paykel

fisherpaykel.com
1.888.936.7872