

## Front Loading Washer Dryer

WD8560F1, WD7560P1 and WD8060P1 models

NZ AU GB

### IMPORTANT!

#### INSTALL APPLIANCE CORRECTLY

The washer dryer must be properly installed and located in accordance with this installation leaflet before it is used. Refer to the user guide for full details.

## UNPACKING

- ① Remove the packaging, polystyrene packer and lift the appliance off the base.
- ② Remove the hose and accessories.

## REMOVING TRANSIT SAFETY BOLTS

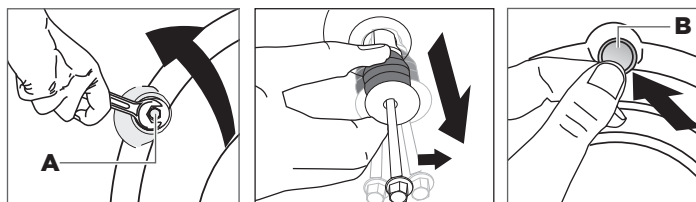
This washer dryer is fitted with transit safety bolts at the rear to avoid possible damage to the interior during transportation.

### IMPORTANT!

The transit bolts **MUST** be removed prior to operating the washer dryer. Failure to remove these will result in damage to the appliance.

#### To remove the bolts

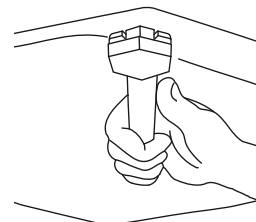
- ① Use a spanner or socket to unscrew and remove all four transit bolts at the back of the appliance (**A**).
- ② Pull the black rubber grommets to remove the bolt, grommet and white plastic spacers from the appliance. Retain these for future use.
- ③ Cover the bolt holes with white plastic plugs (**B**). Push to clip into place.



Removing the transit safety bolts

## LEVELLING YOUR MACHINE

- ① Before moving the washer dryer into its final position, check that it is level — front to back and side to side.
- ② Manoeuvre the appliance into its final position (we suggest a minimum clearance of 20mm each side)
- ③ Use a spirit level to check that the washer dryer is correctly level. If needed, pull the appliance out. Loosen the lock nut using the spanner provided and wind the feet up or down to correctly level the washer dryer.
- ④ Using the spanner provided tighten the lock nuts against the base of the appliance to lock the feet in position.



## CONNECTING TO THE WATER SUPPLY

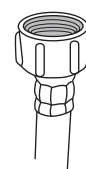
### IMPORTANT!

The cold water should not exceed 35°C.

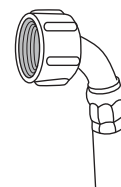
- Inlet water pressure: Maximum 1MPa (150psi), Minimum 100Pa (14.5psi).
- Inlet water flow rate: Minimum 6 litres/minute.

## INLET HOSE

- ① Connect the straight end of the inlet hose to the tap and the elbow end to the washer dryer's inlet valve. Tighten the inlet hose end by hand until the hose seal makes contact with the tap sealing face and then tighten a further half-turn. Make sure there are no kinks in the hose.
- ② Turn the tap on and check for leaks. Check for leaks again after 24 hours.



Straight  
(tap) end



Elbow  
(machine) end

continued >

## DRAIN HOSE

### Drain hose placement in a standpipe or tub

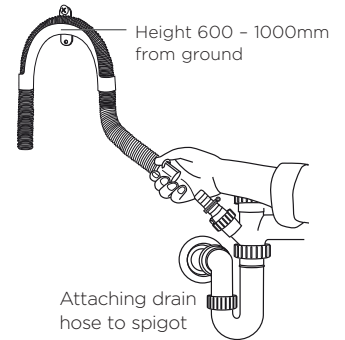
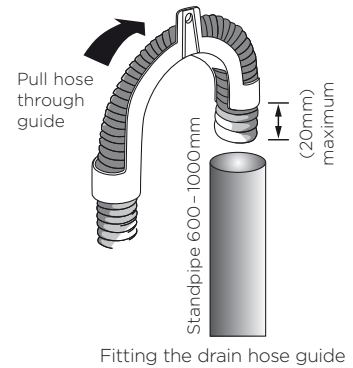
- ① To guide the drain hose over the tub or standpipe the hose guide must be fitted to the drain hose. The height of the standpipe or tub should be between 600 - 1000mm.
- ② Secure the hose guide so it cannot become dislodged from the standpipe or tub.

### IMPORTANT!

- If the drain hose is placed on the ground or if the standpipe or tub is less than 800mm high, the washer dryer will continuously drain while being filled (siphon).
- Regularly check that your standpipe or tub is free from lint or other obstructions, which may affect how your appliance works or may cause flooding.

### Attaching drain hose to spigot (WD8060P1 models only)

- ① Guide drain hose through hose guide
- ② Secure hose guide to back wall of cupboard using a screw. The height of the drain hose should be between 600 - 1000mm from ground level.
- ③ Attach drain hose to spigot and secure using a hose clamp ensuring the blanking insert is cleared from spigot.
- ④ Check for leaks.
  - The drain hose should be checked from time to time and replaced if any damage (eg wear, cuts, bulges, kinks, leaks, etc) is found. Do not bend the drain hose sharply, as this may cause it to split.
  - In multi-storey apartments or any upper floor, the washer dryer should be installed on a floor equipped with a drain.
  - Draining must comply with local by-laws.



## TESTING THE INSTALLATION

### Check the operation of the washer dryer using the following procedure:

- ① Press 'POWER' and turn dial to 'Quick Wash 30' then touch ▶||. Check that the hose is not leaking at the machine and tap end, while waiting until you see water appear in the drum.
- ② Touch ▶|| then press 'POWER' to stop the cycle and turn the machine off.
- ③ Press 'POWER' again, turn the dial to 'Spin' and touch ▶||.
- ④ Check the outlet hose is firmly secured in a standpipe or tub, or to a spigot and the machine pumps out and spins.



## FINAL CHECKLIST

### TO BE COMPLETED BY THE INSTALLER

- Have the transit bolts been removed?
- Is the drain hose threaded through the 'U bend' (with no more than 20mm extended) and hooked into your standpipe or spigot?
- Is the cold hose connected to the Cold valve?
- Is the machine correctly levelled and feet locked?
- Have you performed the installation test cycle?

Complete and keep for safe reference:

Model \_\_\_\_\_

Serial No. \_\_\_\_\_

Purchase Date \_\_\_\_\_

Purchaser \_\_\_\_\_

Dealer Address \_\_\_\_\_

Installer's Name \_\_\_\_\_

Installer's Signature \_\_\_\_\_

Installation Company \_\_\_\_\_

Installation Date \_\_\_\_\_

## FOR MORE INFORMATION

### Before you call for service or assistance...

Check the things you can do yourself including:

- ① the appliance is correctly installed, and that it is level
- ② you are familiar with its normal operation.

For detailed information on the features of your washer dryer and warranty information



see your user guide

If you...

- have any questions or comments
- need a Fisher & Paykel trained and supported service technician to service your appliance
- need replacement parts or accessories
- want to register your appliance



see your user guide or contact us

NZ toll-free, 24/7 0800 372 273  
 AU toll-free, 24/7 1300 650 590  
 GB 08000 886 605

[www.fisherpaykel.com](http://www.fisherpaykel.com)