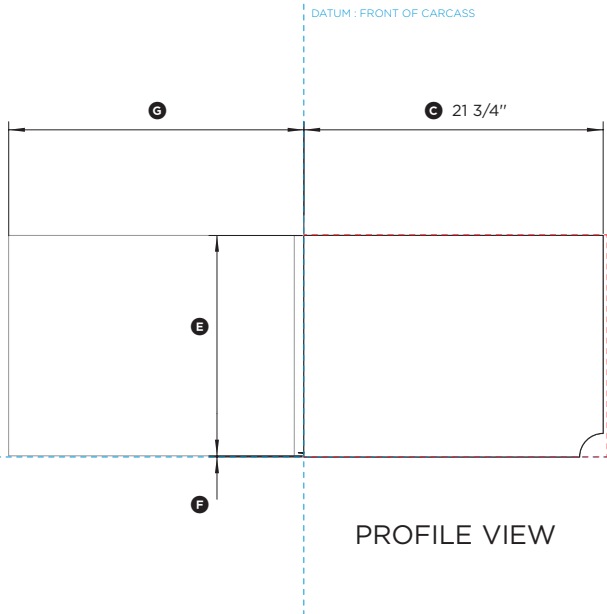
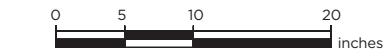
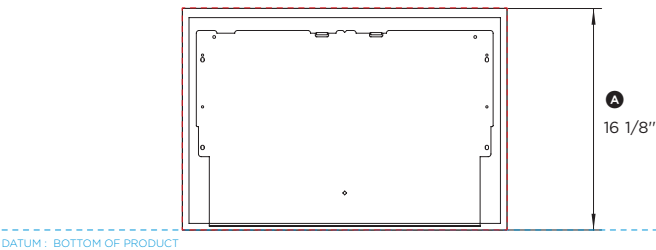
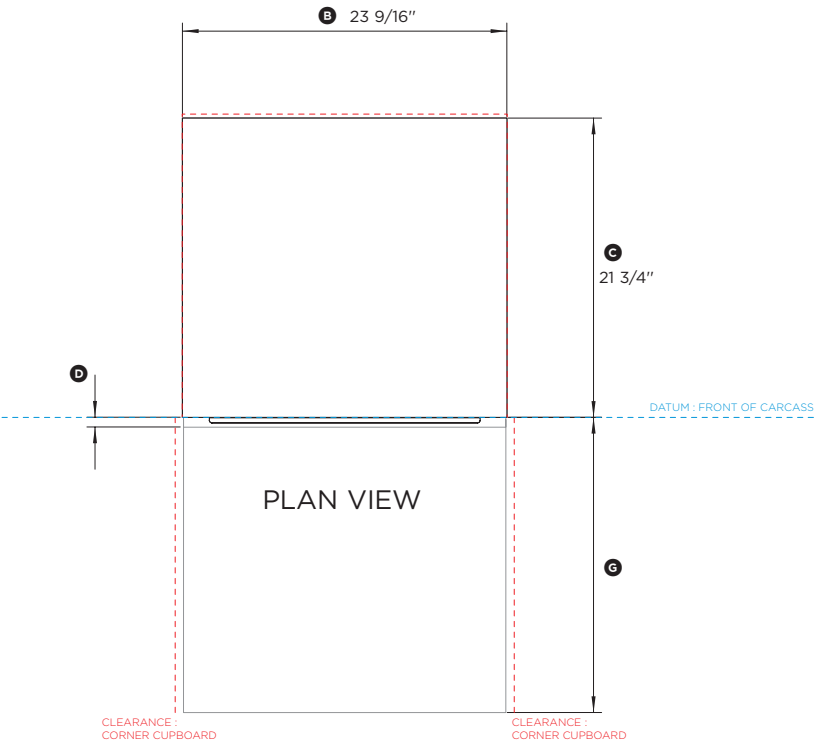


DATA SHEET



24" INTEGRATED SINGLE DISHDRAWER™

Model no:
DD24SI7 (refer page 2 for metric measurements)

Dimensions	in
Ⓐ Overall height of DishDrawer™	16 1/8"
Ⓑ Overall width of DishDrawer™	23 9/16"
Ⓒ Depth of chassis	21 3/4"
Ⓓ Depth of front panel	5/8 - 13/16"
Ⓔ Height of front panel (recommended for a 3/32" ventilation gap below panel, if cavity height is 16 1/4"mm)	16 1/16"
Ⓕ Height of ventilation gap below front panel	min 1/16"
Ⓖ Depth of drawer from front datum (open) (measured from front datum)*	21 7/8"

* Does not include the custom drawer panel or handle to be manufactured and fitted by cabinetmaker.

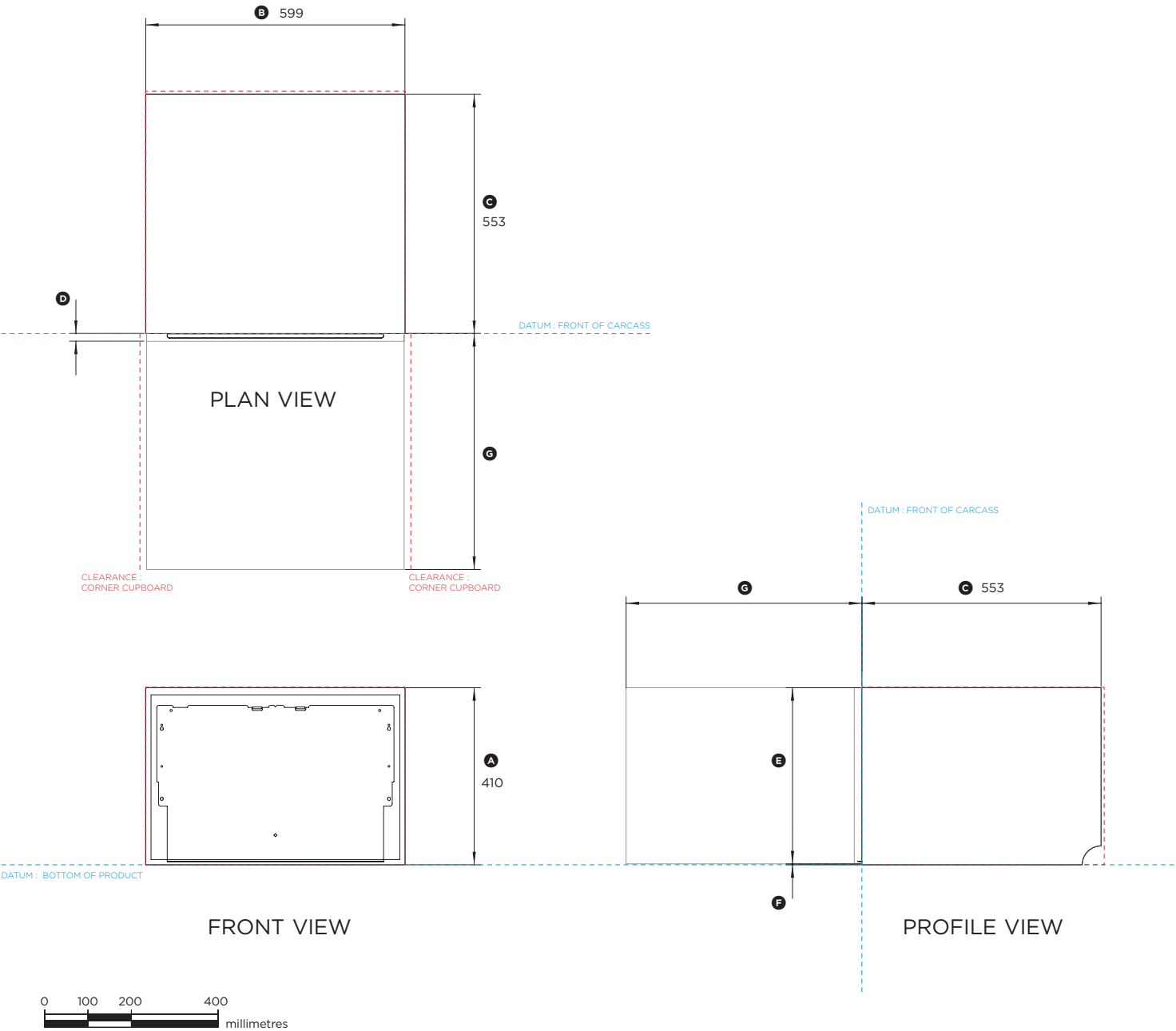
Minimum Clearances	in
Height of cavity	min 16 1/4"
Width of cavity	23 5/8"
Depth of cavity	min 22 1/16"
Minimum clearance from a corner cupboard	1/2"

Note: Service outlet at rear extends both sides, hoses and cords can be routed to either or both.

INDICATES CABINETRY / PRODUCT DATUM
INDICATES CABINETRY CLEARANCES

DATE: 02.09.2015

IMPORTANT NOTE: Throughout this guide, dimensions may vary by ±2mm (3/32"). Please read the installation manual for detailed information on installing the product. www.fisherpaykel.com



Model no:
DD24SI7 (refer page 1 for imperial measurements)

Dimensions	mm
Ⓐ Overall height of DishDrawer™	410
Ⓑ Overall width of DishDrawer™	599
Ⓒ Depth of chassis	553
Ⓓ Depth of front panel	16-20
Ⓔ Height of front panel (recommended for a 2mm ventilation gap below panel, if cavity height is 412mm)	408
Ⓕ Height of ventilation gap below front panel	min 2
Ⓖ Depth of drawer from front datum (open) (measured from front datum)*	527

* Does not include the custom drawer panel or handle to be manufactured and fitted by cabinetmaker.

Minimum Clearances	mm
Height of cavity	min 412
Width of cavity	600
Depth of cavity	min 560
Minimum clearance from a corner cupboard	13

Note: Service outlet at rear extends both sides, hoses and cords can be routed to either or both.

INDICATES CABINETRY / PRODUCT DATUM
INDICATES CABINETRY CLEARANCES - - - - -

DATE: **02.09.2015**

IMPORTANT NOTE: Throughout this guide, dimensions may vary by ±2mm (3/32"). Please read the installation manual for detailed information on installing the product. www.fisherpaykel.com