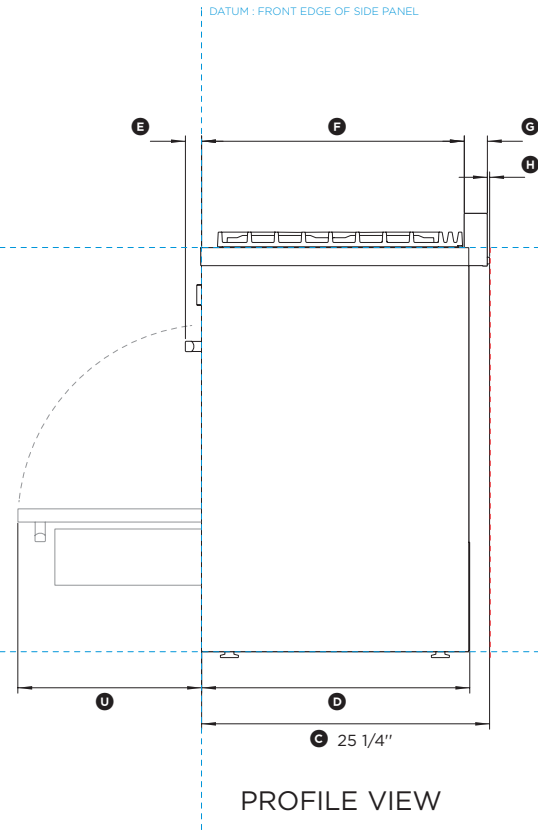
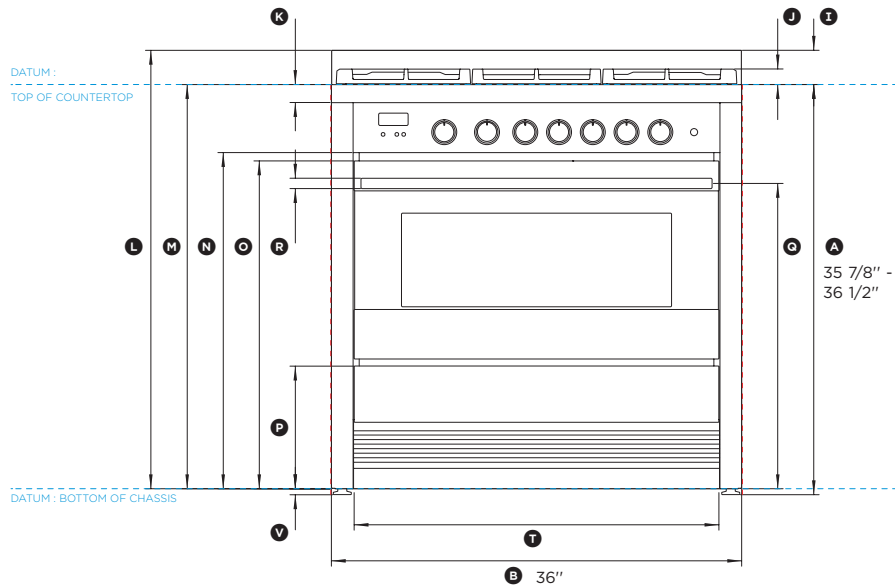
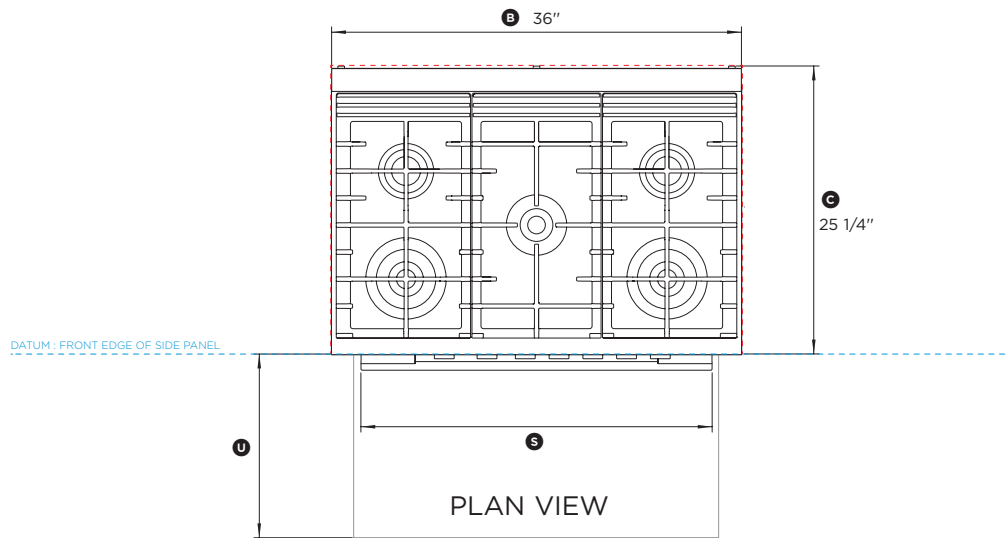
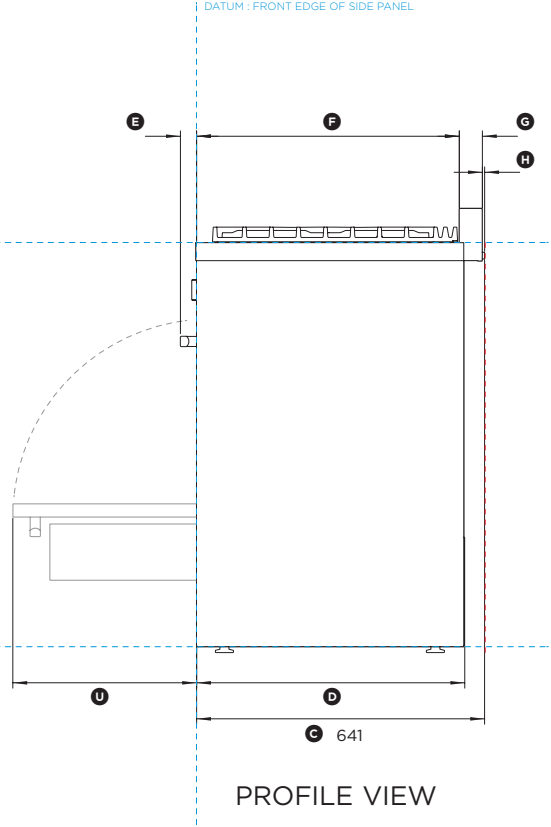
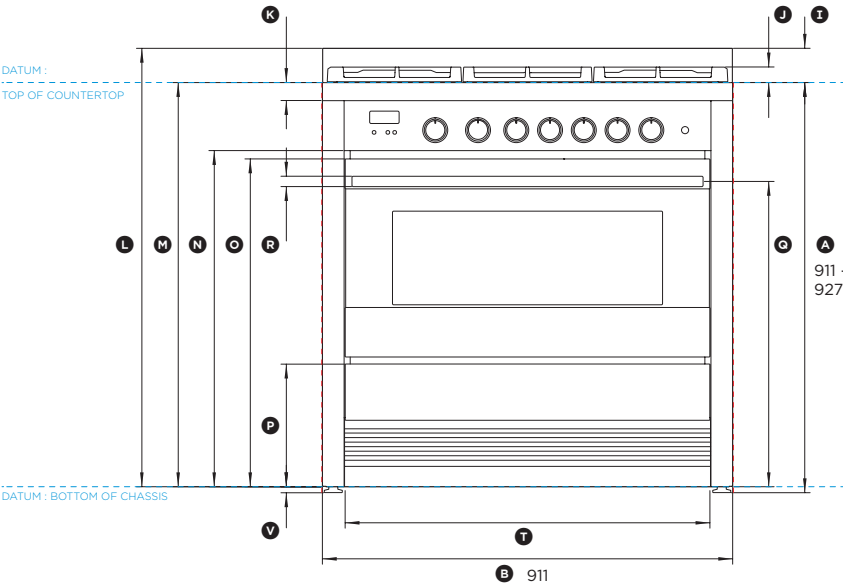
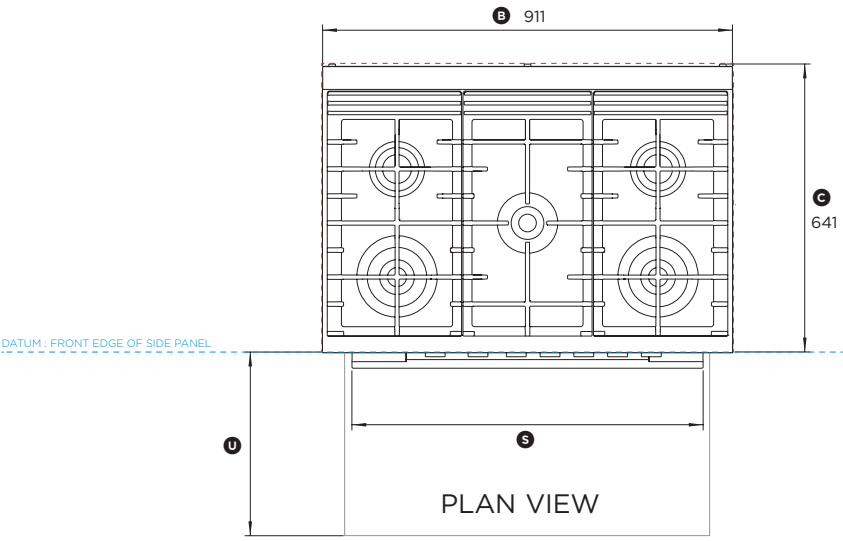


## DATA SHEET



DATA SHEET



36" FREESTANDING GAS RANGE

Model no:  
**OR36SDBMX1** (refer page 1 for imperial measurements)

Dimensions	mm
Ⓐ Overall height of range (from floor to cooktop, excluding grates and backguard)	min 911 max 927
Ⓑ Overall width of range	911
Ⓒ Depth from front datum to rear of product including backguard	641
Ⓓ Depth from front datum to rear of chassis	595
Ⓔ Depth from front datum to front of handle	36
Ⓕ Depth from front datum to front of backguard	583
Ⓖ Depth of backguard	51
Ⓙ Depth of spacers	5
⓫ Height of backguard from countertop datum	76
⓬ Height from countertop datum to top of grates	35
⓭ Height from countertop datum to top of control panel	40
⓯ Height from bottom of chassis to top of backguard	974
⓰ Height from bottom of chassis to countertop datum	898
⓱ Height from bottom of chassis to bottom of control panel	747
⓲ Height from bottom of chassis to top of oven door	728
⓳ Height from bottom of chassis to top of storage drawer	272
⓴ Height from bottom of chassis to door handle centreline	678
⓶ Thickness of handle	23
⓷ Width of handle	780
⓸ Width of door	810
⓹ Depth of open door to front datum	408
⓻ Height of adjustable levelling feet	min 13 max 29

Minimum Clearances*	mm
Overall width of cavity	min 912
Overall depth of cavity	max 641
Overall height of cavity	min 911 max 927

\* Refer to installation documents for additional cabinetry clearances.

INDICATES PRODUCT DATUM  
INDICATES CLEARANCES

DATE: 03.09.2015

IMPORTANT NOTE: Throughout this guide, dimensions may vary by ±2mm (3/32"). Please read the installation manual for detailed information on installing the product. [www.fisherpaykel.com](http://www.fisherpaykel.com)