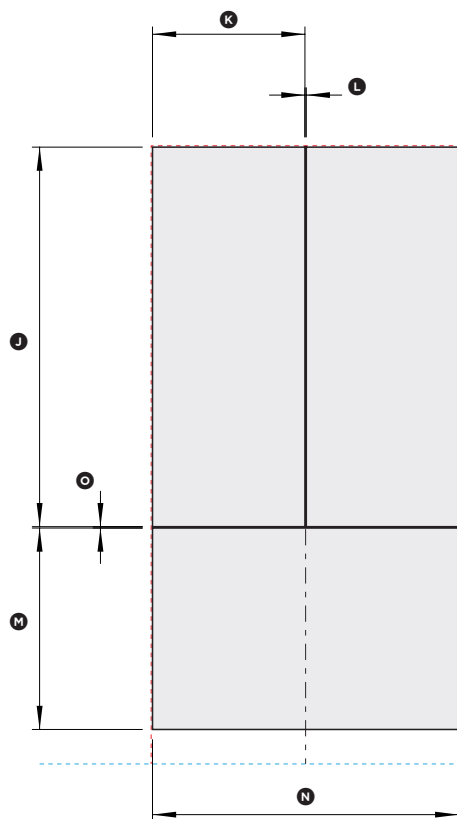
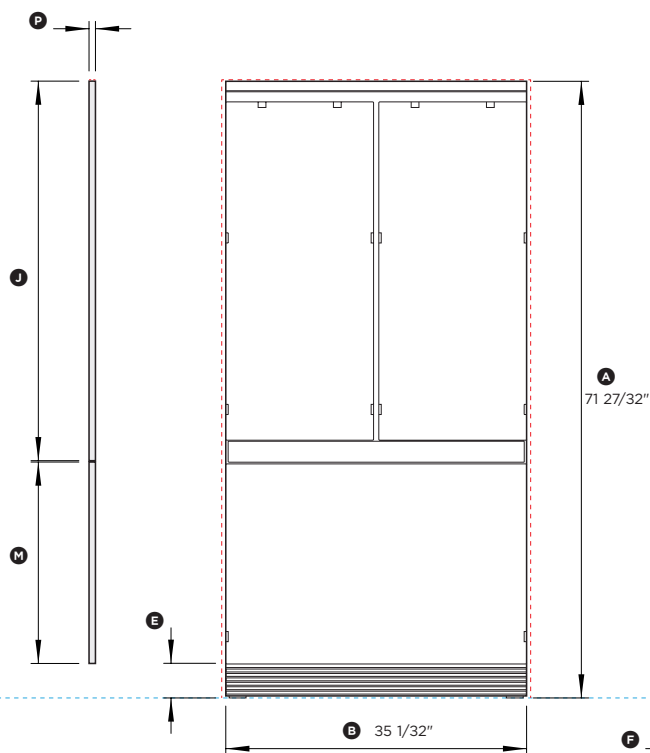


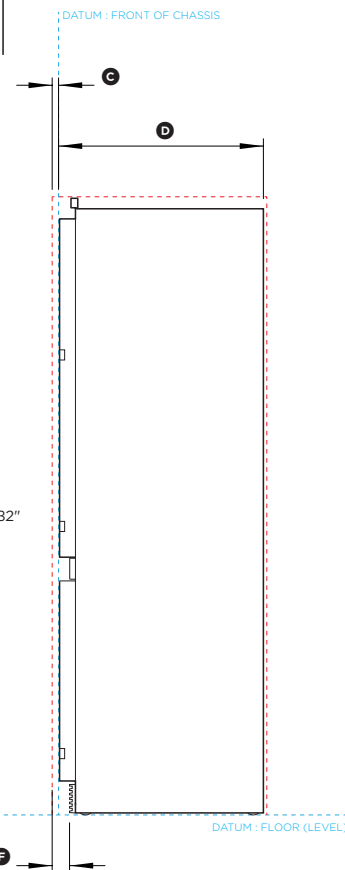
PLAN VIEW



CUSTOM PANELS



FRONT VIEW



PROFILE VIEW

## 36" ActiveSmart™ Built-in Refrigerator

Model no:  
**RS36A72J1**

Product Dimensions	in
Ⓐ Overall height of fridge	71 27/32"
Ⓑ Overall width of fridge	35 1/32"
Ⓒ Depth of fridge front panels (excl. handles)*	3/4"
Ⓓ Overall depth of fridge (excl. front door panels)	23 3/4"
Ⓔ Height from bottom datum to top of toe kick	4"
Ⓕ Depth of toe kick measured from front of door panels*	2"
Ⓖ Depth of door (widest opening) measured from front of cabinetry	17 5/16"
ⓓ Depth of drawer (open) measured from front of cabinetry*	15 3/4"
Ⓣ Minimum door clearance** to adjacent wall (115° - full internal access)*	11 13/16"

\* Door panels to be manufactured and fitted by cabinetmaker, thickness min 5/8" - max 3/4".

\*\* Measured from front cabinetry edge.

Custom Panel Dimensions	in
Ⓜ Height of top door panel	44 7/32"
Ⓚ Width of top door panel	17 3/4"
Ⓛ Gap between top door panels	5/32"
Ⓢ Height of bottom drawer panel	23 15/32"
Ⓝ Width of bottom drawer panel	35 21/32"
Ⓟ Gap between top door panels and bottom drawer panel	5/32"
Ⓟ Depth of custom panels	min 5/8" max 3/4"
Maximum weight of an individual top door panel	22 pounds
Maximum weight of bottom drawer panel	21 pounds

Minimum Clearances	in
Minimum cabinetry gap clearance from edge of custom panels	5/32"
Overall height of cavity	72"
Overall width of cavity	
when adjoining cabinetry cannot share 4mm door gap	36"
Overall depth of cavity	25"

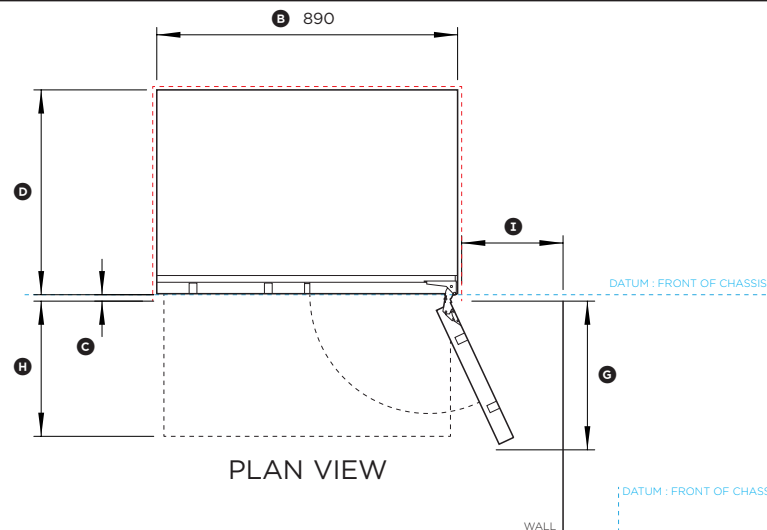
INDICATES PRODUCT DATUM

INDICATES MINIMUM CABINETRY CLEARANCES

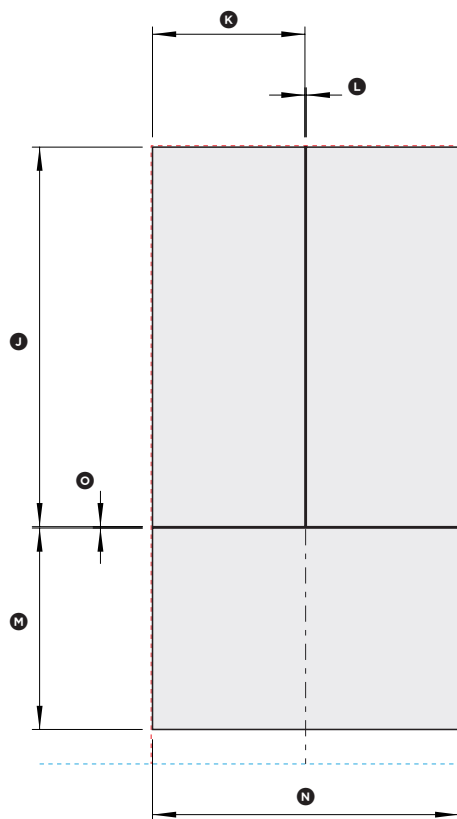
DATE: 10.06.2015

IMPORTANT NOTE: Throughout this guide, dimensions may vary by ±2mm (3/32"). Please read the installation manual for detailed information on installing the product. [www.fisherpaykel.com](http://www.fisherpaykel.com)

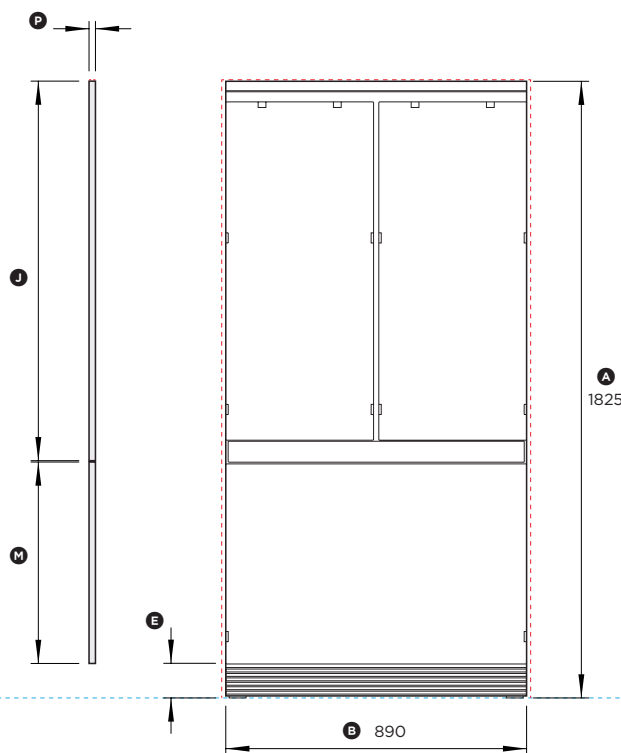
**Fisher & Paykel**



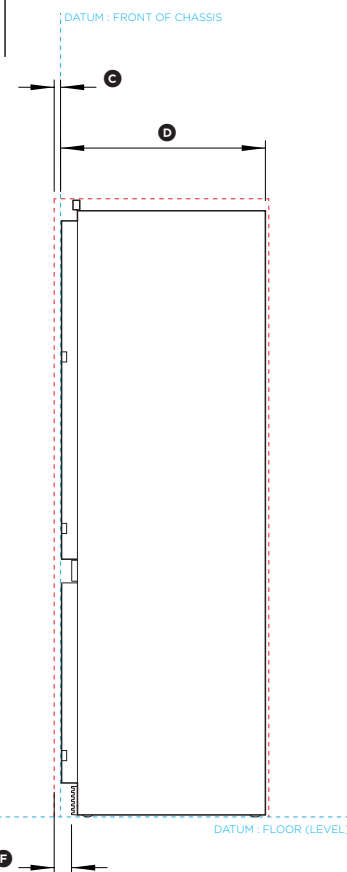
PLAN VIEW



CUSTOM PANELS



FRONT VIEW



PROFILE VIEW

## 36" ActiveSmart™ Built-in Refrigerator

Model no:  
**RS36A72J1**

Product Dimensions	mm
Ⓐ Overall height of fridge	1825
Ⓑ Overall width of fridge	890
Ⓒ Depth of fridge front panels (excl. handles)*	19
Ⓓ Overall depth of fridge (excl. front door panels)	603
Ⓔ Height from bottom datum to top of toekick	102
Ⓕ Depth of toekick measured from front of door panels*	51
Ⓖ Depth of door (widest opening) measured from front of cabinetry	440
Ⓜ Depth of drawer (open) measured from front of cabinetry*	400
Ⓣ Minimum door clearance** to adjacent wall (115° - full internal access)*	300

\* Door panels to be manufactured and fitted by cabinetmaker, thickness min 16 - max 19mm.

\*\* Measured from front cabinetry edge.

Custom Panel Dimensions	mm
Ⓣ Height of top door panel	1123
Ⓚ Width of top door panel	451
Ⓛ Gap between top door panels	4
Ⓢ Height of bottom drawer panel	596
Ⓝ Width of bottom drawer panel	906
Ⓟ Gap between top door panels and bottom drawer panel	4
Ⓟ Depth of custom panels	min 16 max 19
Maximum weight of an individual top door panel	10kg
Maximum weight of bottom drawer panel	9.5kg

Minimum Clearances	mm
Minimum cabinetry gap clearance from edge of custom panels	4
Overall height of cavity	1829
Overall width of cavity	
when adjoining cabinetry cannot share 4mm door gap	914
Overall depth of cavity	635

INDICATES PRODUCT DATUM

INDICATES MINIMUM CABINETRY CLEARANCES

DATE: 10.06.2015

IMPORTANT NOTE: Throughout this guide, dimensions may vary by ±2mm (3/32"). Please read the installation manual for detailed information on installing the product. [www.fisherpaykel.com](http://www.fisherpaykel.com)

**Fisher & Paykel**