

# Professional Round Flush Handle Kit for Integrated Refrigerator Freezer, 36"

SKU

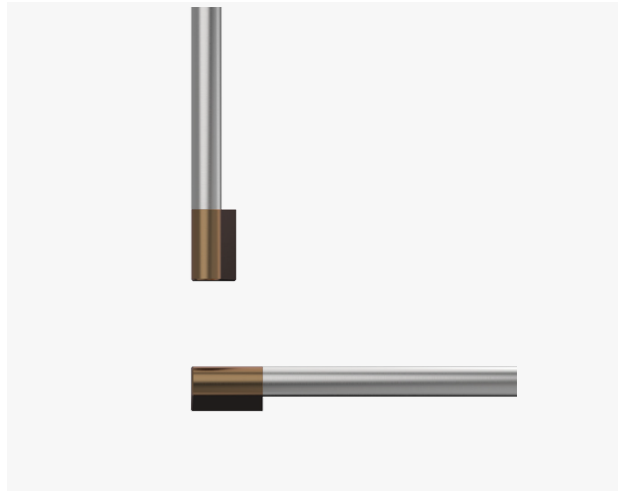
26777

The product dimensions and specifications in this page apply to the specific product and model. Under our policy of continuous improvement, these dimensions and specifications may change at any time. You should therefore check with Fisher & Paykel's Customer Care Centre to ensure this page correctly describes the model currently available. Fisher & Paykel Appliances Ltd 2020

**Where applicable:**

All appliances use energy, and energy usage typically generates carbon emissions. **Fisher & Paykel Appliances' In-use Energy Carbon Emissions Estimate** indicates carbon emissions from a product's in-use energy. This is calculated either annually or per cycle, using the product's market-specific energy label energy consumption data multiplied by the carbon emissions factor for energy in your country or region.

Our In-use Energy Carbon Emissions Estimate is designed to assist customers in making informed purchasing decisions when comparing different Fisher & Paykel products. For example, a heat pump dryer typically has a lower In-use Energy Carbon Emissions Estimate than a vented dryer.



Customize your Integrated Refrigerator Freezer, 36" to complement your kitchen interior with this Handle Kit, featuring a brushed satin finish and dark copper off-stands.

- Designed for the Integrated Refrigerator Freezer, 36"
- Stainless steel handles with dark copper-colored off-stands, ideal for both light and dark kitchens
- PVD coated
- Two pieces supplied

**Other product downloads available at [fisherpaykel.com](https://fisherpaykel.com)**[Service & Warranty](#)[Planning Guide Professional Style Dial/Handle Accessories](#)**A PEACE OF MIND SALE****24 Hours 7 Days a Week Customer Support****T 1.888.936.7872 W [www.fisherpaykel.com](https://www.fisherpaykel.com)**