

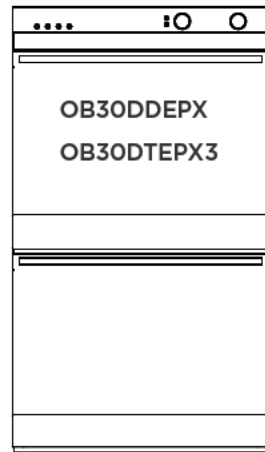
AEROTECH™ OVEN

US CA

Keep this document handy for easy reference.

- For detailed information on the features of your oven, see your 'User guide'.
- Before using your oven, make sure you read the full 'User guide', with special attention to the 'Safety and warnings' section.
- For contact information or if you require service, assistance or replacement parts, see the end of this document or your 'Service & warranty' booklet.

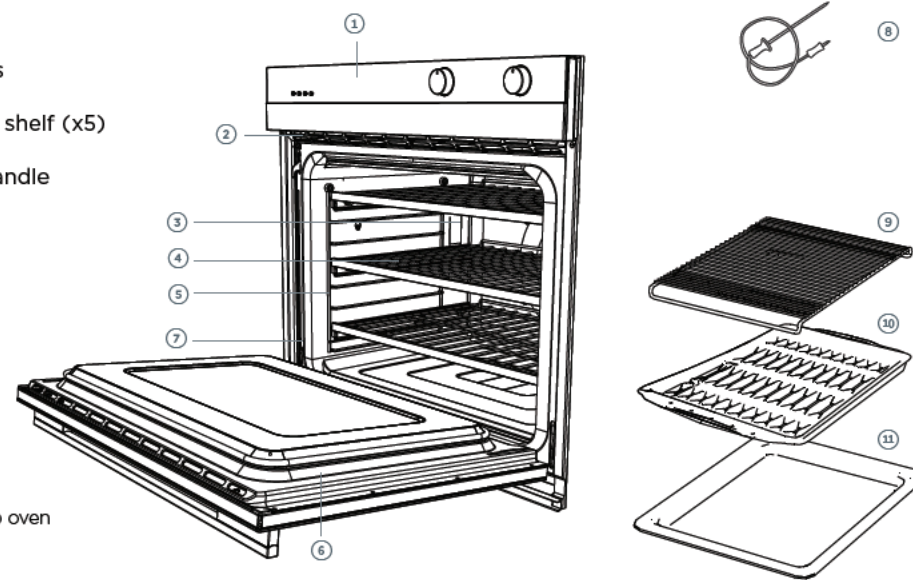
YOUR MODEL



- ① Control panel
- ② Oven vent louvres
- ③ Oven light
- ④ Telescopic sliding shelf (x5)
- ⑤ Side rack
- ⑥ Oven door and handle
- ⑦ Oven seal

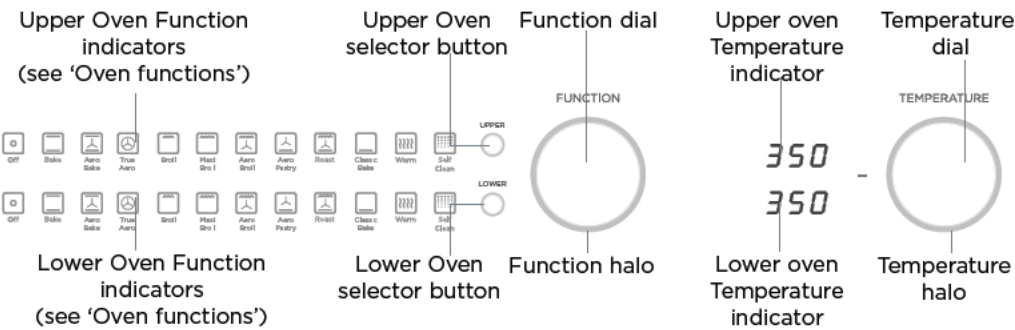
Accessories:

- ⑧ Meat probe
- ⑨ Rack
- ⑩ Grid
- ⑪ Pan



OB30DDEPX3 Top oven illustrated

THE CONTROL PANEL



Control lock indicator (see 'Locking the control panel')

if lit:
Control panel is locked

Locking the control panel

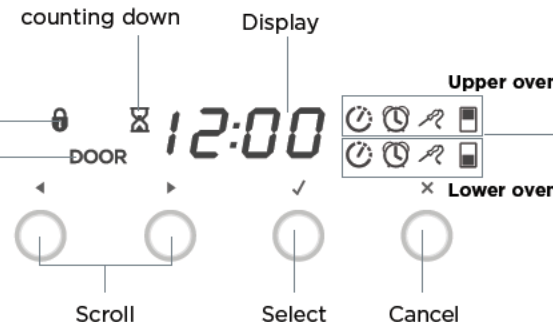
- To lock, press and hold the select ✓ button until the control lock indicator 🔒 comes on.
- To unlock, press and hold the cancel ✕ button until the indicator 🔒 flashes and then goes out.

Close door indicator

if lit:
Door is open when oven is on (some functions only). See 'Troubleshooting' in your User guide.

Timer indicator (see 'Using the timer')

if lit:
Timer is counting down



Cooking time indicator (see 'Automatic cooking' in User guide)

if lit:
Automatic cooking time is set

Stop time indicator (see 'Automatic cooking' in User guide)

if lit:
Automatic stop time is set

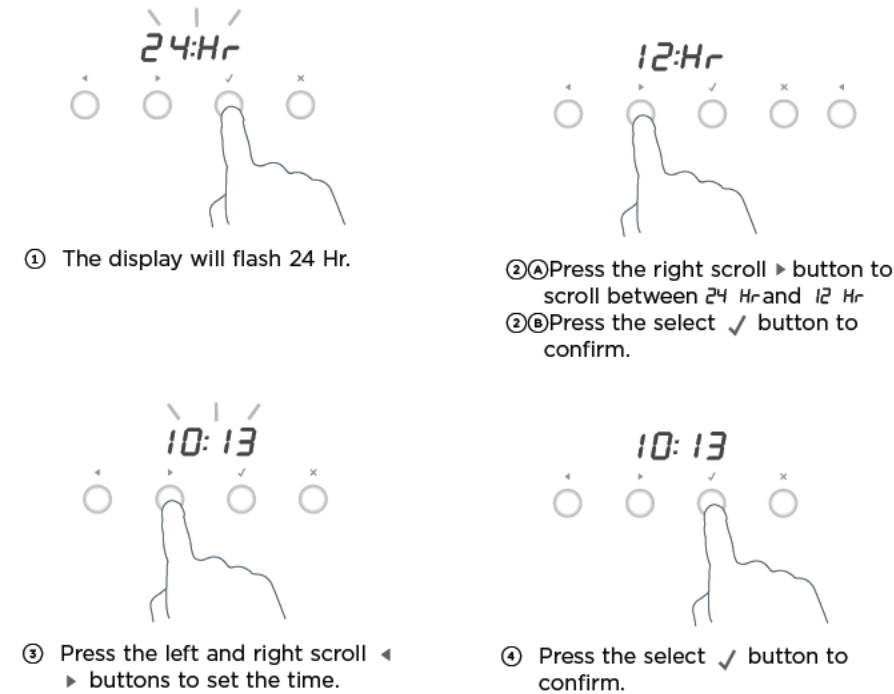
Meat probe indicator (see 'Using the meat probe' in User guide)

if lit:
Meat probe is in use (display will alternate between probe set temperature and internal temperature of the meat)

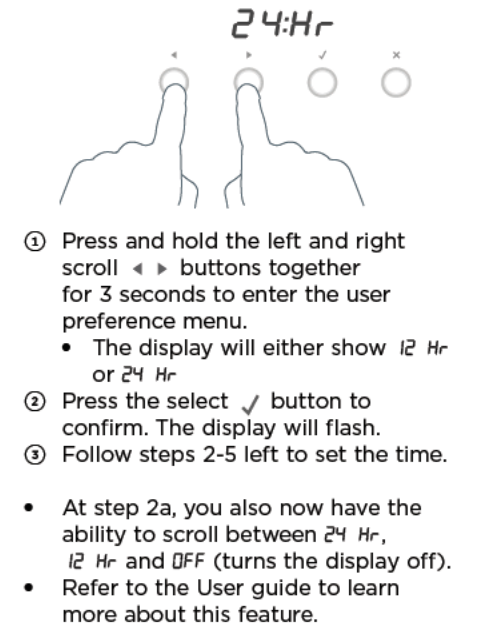
- 🔒 **Upper Oven indicator** if lit: Oven is on
- 🔒 **Lower Oven indicator** if lit: Oven is on

You set the clock within the user preference menu. To learn more about the user preference menu, refer to your User guide.
Note: If you do not wish to set the time initially when the oven is first switched on at the wall, press the cancel ✕ button to exit the clock setting. If you want to set the clock later, follow the steps under 'To change the time'.

When the oven is first switched on at the wall



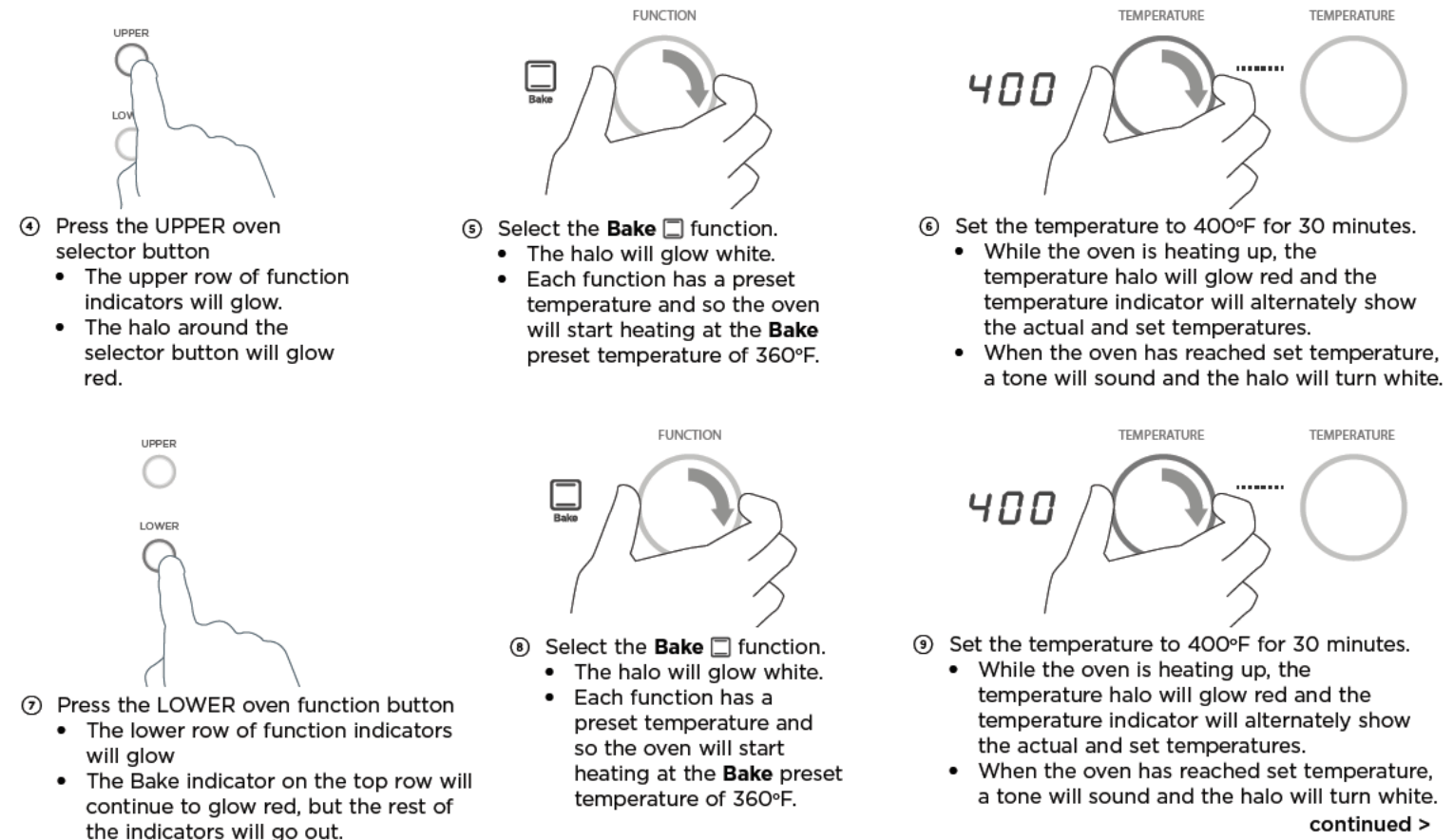
To change the time (within the user preference menu)



CONDITION BOTH OVENS

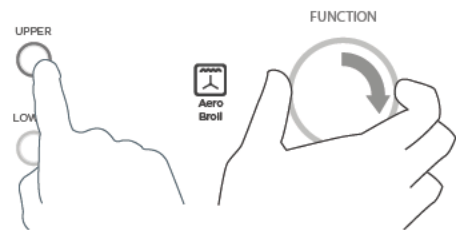
It is important that you condition the oven before using it for cooking and baking. Conditioning will burn off any manufacturing residue and ensure you get the best results from the start. You can condition both ovens at the same time. Follow the steps below. There will be a distinctive smell and a small amount of smoke during conditioning. This is normal, but make sure the kitchen is well ventilated.

- ① Make sure you have removed any packaging and any cable ties used to secure the shelving during transit.
- ② Make sure you have set the clock.
- ③ Make sure all the shelves are fitted.



continued >

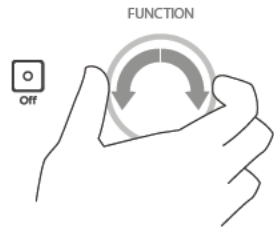
CONDITION BOTH OVENS



- ⑩ After 30 minutes is up, press the UPPER oven selector button.
- The lower indicators will go out except for the Bake function.
 - The upper indicator lights will glow.
- ⑪ Select **Aero Broil**. Set the temperature to 400°F for 5 minutes.



- ⑫ Press the LOWER oven selector button. Select **Aero Broil**. Set the temperature to 400°F for 5 minutes.



- ⑬ When you have finished, select each oven in turn using the UPPER and LOWER oven selector buttons and turn the dial function to Off. Both halos will go out.

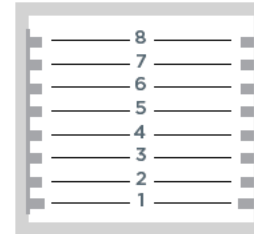
- ⑭ Wipe out the ovens with a damp cloth and mild detergent and thoroughly dry.

REPOSITIONING THE SHELVES

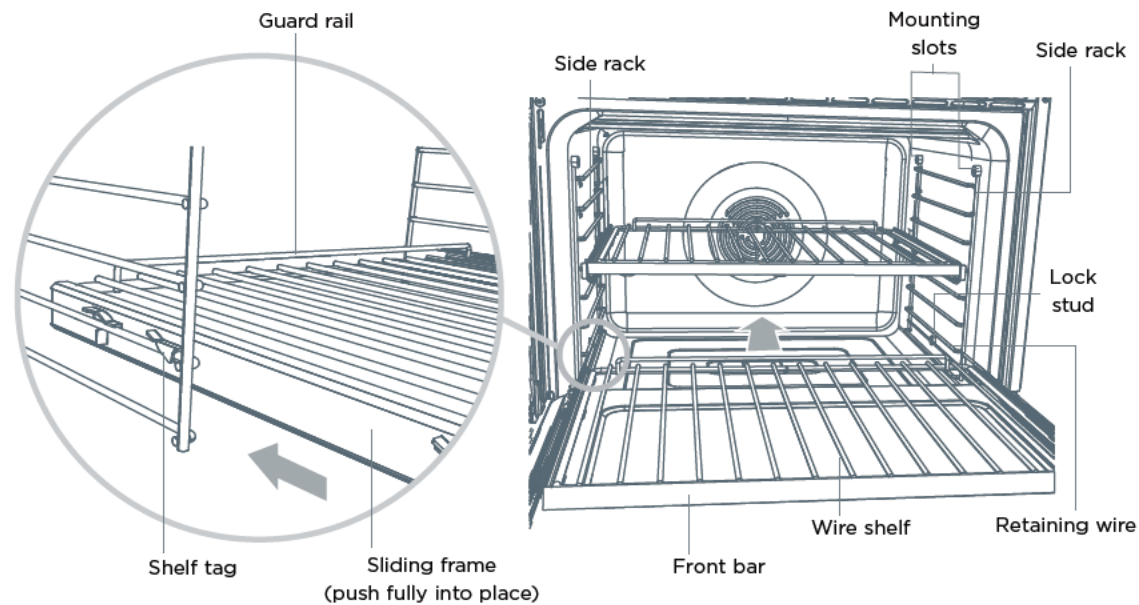
Placing the telescopic sliding shelves on the side racks provides EIGHT cooking positions to choose from. Refer to the User guide for suggested shelf positions.

Note: generally, the shelf positions in the top of the oven are suitable for broiling. Those in the middle or lower region of the oven are suitable for baking, roasting and casseroles.

- Always position oven shelves BEFORE heating the oven.
- To remove a sliding shelf, grip it by its two front corners (making sure you are gripping the wire shelf and the sliding frame together), tilt upwards and pull it out of the oven.
- To place a sliding shelf in the oven correctly, position it so that the front bar is toward you, as shown.
- Check that the sliding frame is not extended.
- Check the guard rail (as shown) to make sure the shelf is the right way up.
- Position the shelf so that it is level and the rear shelf tags on both sides of the sliding frame rest on the side racks (as shown).
- Then push the sliding shelf all the way to the back of the oven, until the front shelf tags drop into place.
- For your safety, the wire shelves and telescopic sliding frames are built together as one unit and are not separable. This means that when placed properly on the side racks, the slides will prevent the wire shelves from tilting when pulled towards you.
- To prevent the tags from lifting off the side racks, take care to slide the shelves forward horizontally.



Shelf positions

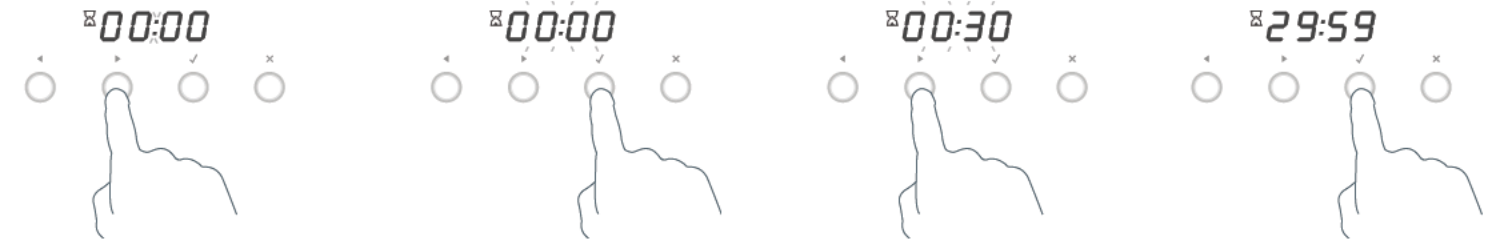


USING THE TIMER

- You can use the timer at any time, even if you are not using the oven.
- If the time is more than an hour, the display will count down in minutes (hr:min). If it is less than an hour, it will count down in seconds (min:sec).
- You can set the timer for up to 23 hours 59 minutes.

IMPORTANT!

The timer does NOT turn the oven off.



- ① Select the timer by pressing the right scroll button once.
- The timer indicator will appear and the colon will flash.
- ② Press the select button to confirm.
- The display will flash to indicate the timer is ready to be set.
- ③ Set the time by pressing the scroll buttons.
- Holding the buttons down will speed up the scrolling.
- ④ Press the select button to confirm.
- The timer will then begin to count down.
 - If you want to check the time of day, press the cancel button once.
 - Press the right scroll button to scroll back to the timer.

To modify the timer setting

- ① Make sure the display shows the remaining time counting down.
- ② Press the select button.
- ③ Press the scroll buttons to set a new time.
- ④ Press the select button to confirm.

To cancel the timer setting

- ① Make sure the display shows the remaining time counting down.
- ② Press the cancel button until the display shows the time of day and the timer indicator disappears.

When the set time is up

- The display will show 0:00 and a tone will sound every 15 seconds.
- Press any button to stop the tone sounding. The display will revert to showing the time of day.

FOR MORE INFORMATION

For detailed information on the features of your oven



see your 'User guide'

For warranty information



see your 'Service and warranty' booklet

If you...

- have any questions or comments
- need a Fisher & Paykel authorized technician to service your product
- need replacement parts or accessories
- want to register your product



see your 'Service and warranty' booklet or contact us

USA toll-free, 24/7 1 888 936 7872
CA toll-free, 24/7 1 888 936 7872

www.fisherpaykel.com