

INSTALLATION INSTRUCTIONS

Gas-on-glass cooktop

CG301D, CG451, CG752D & CG903D
models

HK SG

Fisher & Paykel

www.fisherpaykel.com

590631C 02.16

⚠ WARNING!



Electrical shock hazard
Disconnect the appliance from the mains electricity supply before carrying out any work or maintenance on it.
Connection to a good earth wiring system is essential and mandatory. Alterations to the domestic wiring system must only be made by a qualified electrician.
Failure to follow this advice may result in electrical shock or death.

⚠ WARNING!



Cut Hazard
Take care - panel edges are sharp.
Failure to use caution could result in injury or cuts.

IMPORTANT SAFETY INSTRUCTIONS

- Particular attention shall be given to the relevant requirements regarding ventilation.
- Read these instructions carefully before installing this product.
- Please make this information available to the person installing the appliance as it could reduce your installation costs.
- This appliance is to be installed and serviced only by an authorised person.
- Installation must comply with your local building and local gas authority codes and electricity regulations.
- Incorrect installation, for which the manufacturer accepts no responsibility, may cause personal injury or damage and could invalidate any warranty or liability claims.
- Appliances are factory set for LPG or Town Gas (Hong Kong) or Town Gas (Singapore). If in doubt, refer to the local gas network operator of gas supplier to confirm gas type at the installation site.

IMPORTANT!
SAVE THESE INSTRUCTIONS

The models shown in this installation guide may not be available in all markets and are subject to change at any time. For current details about model and specification availability in your country, please go to our website www.fisherpaykel.com or contact your local Fisher & Paykel dealer.

IMPORTANT SAFETY INSTRUCTIONS

- **Appliances are factory set for Natural gas but are convertible to LPG. If in doubt, refer to the local gas network operator or gas supplier to confirm gas type at installation site.**
 - **Do not modify this appliance.**
 - **Do not use or store flammable materials on or near this appliance.**
 - **Do not spray aerosols in the vicinity of this appliance while it is in operation.**
 - **Packing elements (eg plastic bags, polystyrene foam, staples, packing straps etc) and tools should not be left around during and after installation, especially if they are within easy reach of children, as these may cause serious injuries.**
- You must remove the transit screws before installing the cooktop. See step 8 of installation instructions.**

Before you install the appliance, please make sure that

- the local distribution conditions (nature of gas and pressure) and the adjustment of the appliance are compatible. For adjustment conditions for this appliance see 'Gas rate summary'.
- a suitable disconnection switch is incorporated in the permanent wiring, mounted and positioned to comply with the local wiring rules and regulations. A means of disconnection with at least a 3 mm air gap contact separation in all poles must be incorporated into the fixed wiring in accordance with the wiring rules, unless the local wiring rules allow for alternative means.
- the appliance is connected to a 220V - 240V 50Hz (10 A) power supply only and earthed via the power supply cable.
- there is a power outlet within reach of the power supply cable (900 mm from the centre rear of the product). This must be accessible after installation. The power supply cable should not touch any metal parts.

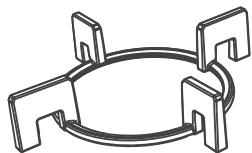
- if the power supply cable is damaged, it is replaced only by the special cable: Part no. 534906 TRMNL BLOCK-FLEX ASSY HITEMP GOG UK, obtainable from authorised Fisher & Paykel Service Agents. Please see your 'Service and Warranty' booklet for contact details.
- the supply connection point (gas shut-off valve) is accessible after installation.
- the benchtop is made of a heat resistant material.
the installation complies with all the current requirements of National and Local Authority Gas, Electric and other relevant Codes and Regulations.

When you install the appliance

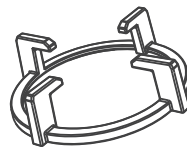
- As servicing requires removing of the cooktop from the benchtop we do not recommend flush mounting. To the fullest extent permissible by law, the owner carries all risk for flush mounting of the cooktop. The owner must ensure the cooktop has been cut out from the benchtop before servicing can be carried out. Fisher & Paykel will not be liable for any costs associated with removing or replacing a flush-mounted and/or sealed-in product, nor for repairing any damage that may be incurred by doing this. Fisher & Paykel does not exclude any statutory liability it may have and which by law cannot be excluded, because of the giving of this notice.

- If installed with an approved flexible hose, the hose should not come in contact with the bottom of the appliance or any sharp edges. Flexible hose assemblies should comply with local regulations.
- Seal exposed bare edges of the cutout with an oil-based paint or moisture-proof polyurethane to prevent possible moisture creeping between the cooktop trim and the benchtop.
- Take extreme care not to chip, crack, or break the top glass surfaces during installation. A heavy metal tool or part accidentally dropped on the glass could damage it.
- If, after following the instructions given, correct performance cannot be achieved, please contact your nearest Fisher & Paykel Authorised Service Centre, Customer Care, or contact us through our website listed on the cover of this document.

2 PARTS SUPPLIED



Dual Wok Pan support
(1 per Dual Wok)



Semi-rapid Pan support (1)
(CG903D only)



Small pan support (1)
(some models only)



Wok stand
(1 per Dual Wok)



Gas Elbow (1)



Elbow 1/2" BSP
external thread (1)



Clamping
brackets (4)
and screws

Installing multiple products

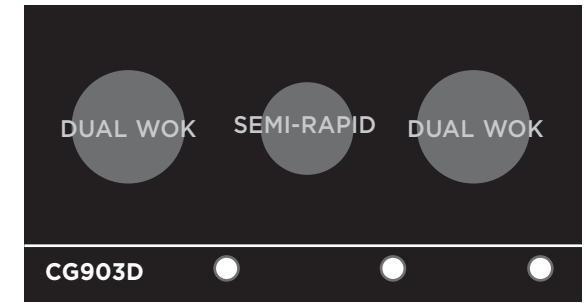
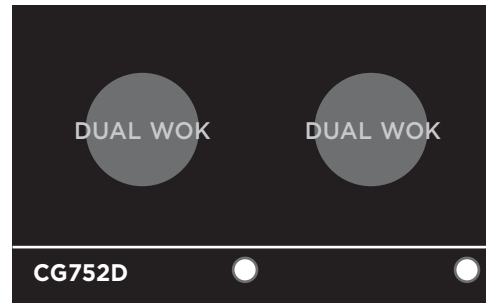
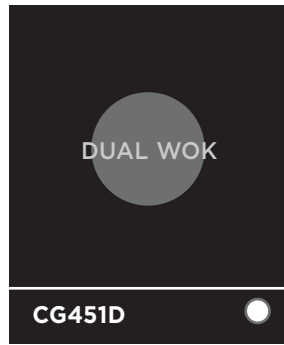
Note: We recommend installing multiple products in separate cutouts, with a minimum 5mm space between the glass edges of the adjacent products. If installing multiple products adjacent to each other within the same cutout, a separate joining strip kit is required for installation.

The kit is available from the nearest Fisher & Paykel Authorised Service Centre or our website listed on the cover of this document.

If installing different products adjacent to each other (eg a wok burner next to an induction cooktop), the minimum clearance measurements for the different products may vary. Always use the greater distance.

3 GAS RATE SUMMARY

All appliances are factory set for either Natural Gas or LPG.
Check the 'Gas type' sticker on the base of the appliance.



HONG KONG

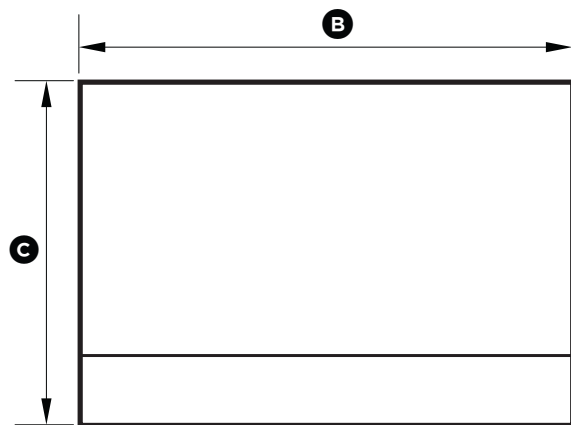
	CG301D		CG451D		CG752D		CG903D			
GAS TYPE	DUAL WOK		DUAL WOK		DUAL WOK		SEMI-RAPID		DUAL WOK	
	Jet size (mm)	Nominal rating (kW)	Jet size (mm)	Nominal rating (kW)	Jet size (mm)	Nominal rating (kW)	Jet size (mm)	Nominal rating (kW)	Jet size (mm)	Nominal rating (kW)
TG (G110) (1.5 kPa/15 mbar)*	2.60 2.60 1.50	X.XX	2.50 2.50 1.30	5.80	2.30 2.30 1.10	5.50	1.55 1.60		2.30 2.30 1.10	5.50
LPG (G30) (2.9 kPa/29 mbar)*	0.80 0.80 0.50	X.XX	0.80 0.80 0.50	4.86	0.73 0.73 0.50	4.86	0.76 2.36		0.73 0.73 0.50	4.86

SINGAPORE

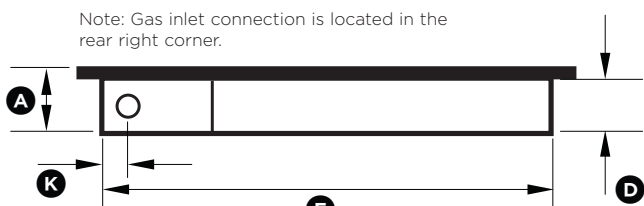
	CG301D		CG451D		CG752D		CG903D			
GAS TYPE	DUAL WOK		DUAL WOK		DUAL WOK		SEMI-RAPID		DUAL WOK	
	Jet size (mm)	Nominal rating (kW)	Jet size (mm)	Nominal rating (kW)	Jet size (mm)	Nominal rating (kW)	Jet size (mm)	Nominal rating (kW)	Jet size (mm)	Nominal rating (kW)
TG (G110) (0.8 kPa/8 mbar)*	3.50 3.50 1.50	5.50	2.50 2.50 1.30	4.00	2.50 2.50 1.30	4.68	2.07 2.20		2.50 2.50 1.30	4.68
LPG (G30) (2.9 kPa/29 mbar)*	0.80 0.80 0.50	5.50	0.80 0.80 0.50	5.10	0.73 0.73 0.50	5.00	0.76 2.28		0.73 0.73 0.50	5.00

*Nominal pressure with one dual wok burner on High.

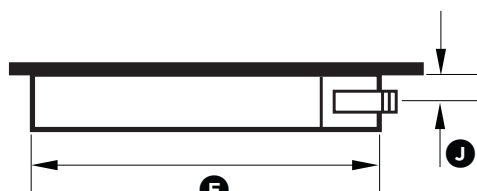
④ PRODUCT & CABINETRY DIMENSIONS



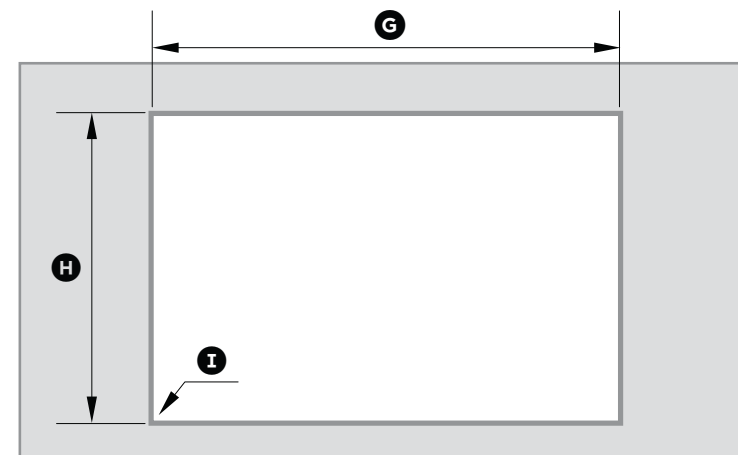
TOP



REAR



SIDE



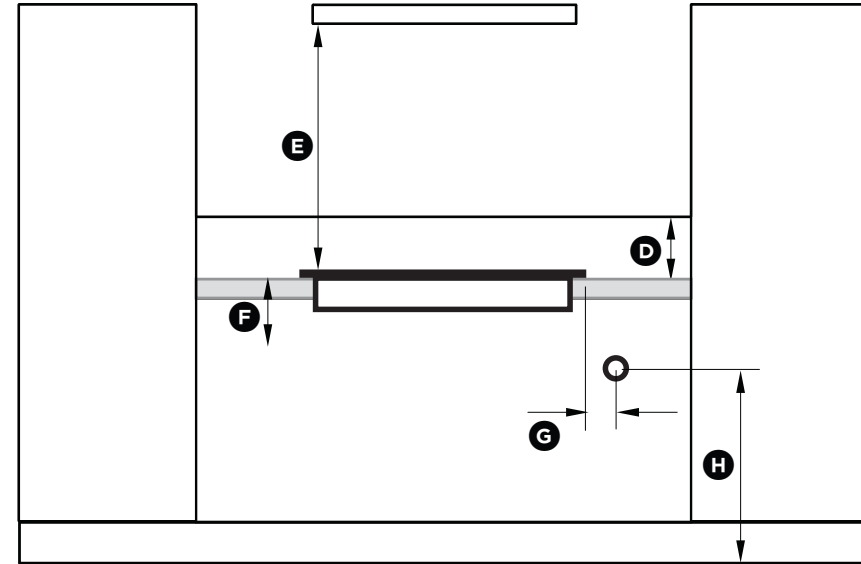
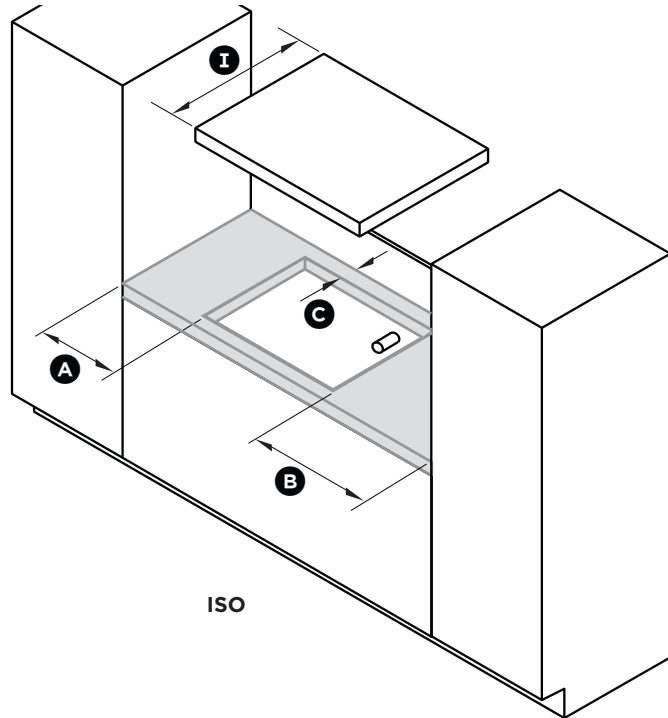
TOP



FRONT

PRODUCT AND CABINETRY DIMENSIONS	CG301D	CG451D	CG752D	CG903D
	mm	mm	mm	mm
(A) Overall height of product (excluding burners, dials and pan supports)	64	64	64	64
(B) Overall width of product	300	450	750	900
(C) Overall depth of product	530	530	450	450
(D) Height of chassis (below top of bench)	59	59	59	59
(E) Width of chassis	256	406	706	856
(F) Depth of chassis	486	486	410	410
(G) Overall width of cutout	260	415	715	865
(H) Overall depth of cutout	490	490	410	410
(I) Corner radius of cutout	max. 10	max. 10	max. 10	max. 10
(J) Distance from top of bench to centre of gas inlet on product	30	30	30	30
(K) Distance from edge of chassis to gas inlet on product	21	21	21	21

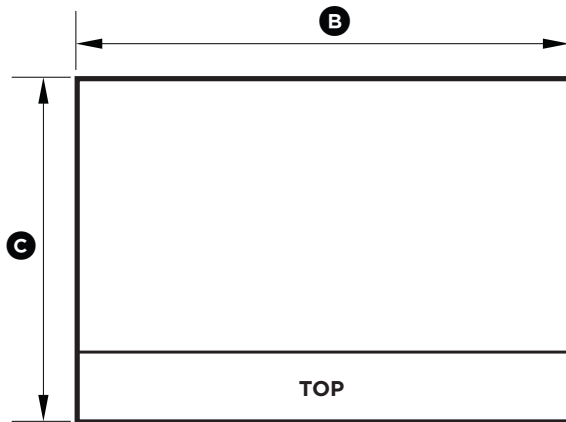
5 CLEARANCE DIMENSIONS



CLEARANCE DIMENSIONS	CG301D	CG451D	CG752D	CG903D
	mm	mm	mm	mm
(A) Minimum clearance from left edge of cutout to nearest combustible surface	120	60	115	115
(B) Minimum clearance from right edge of cutout to nearest combustible surface	120	60	115	115
(C) Minimum clearance from rear edge of cutout to:				
	Nearest combustible surface	85	125	125
	Nearest non-combustible surface	45	45	45
(D) Minimum height of non-combustible material when used on adjacent walls	150	150	150	150
(E) Minimum clearance from cooktop surface to:				
	Rangehood	650	650	650
	Any other overhead exhaust fan	800	800	800
	Downward facing combustible surface	650	650	650
	Downwards-facing tiled or fire resistant surface	500	500	500
(F) Minimum clearance below top of benchtop to:				
	Combustible surface	70	70	70
	Fisher & paykel oven or nearest non-combustible surface	65	65	65
(G) Minimum distance from right edge of cooktop to gas connection point on wall (if using a flexible hose)	250	250	250	250
(H) Distance from floor to gas connection point on wall (if using a flexible hose)	min. 800 - max. 850	min. 800 - max. 850	min. 800 - max. 850	min. 800 - max. 850
(I) Maximum overall depth of overhead cabinetry	600	600	600	600

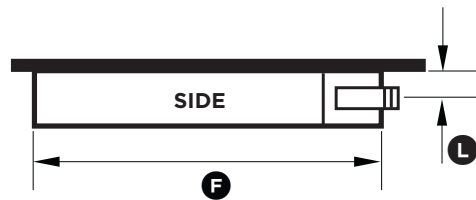
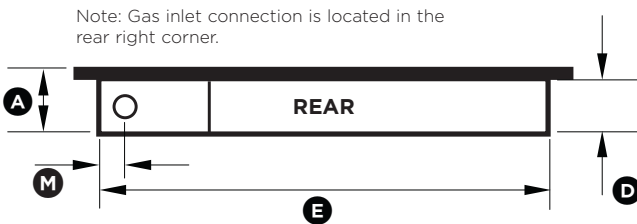
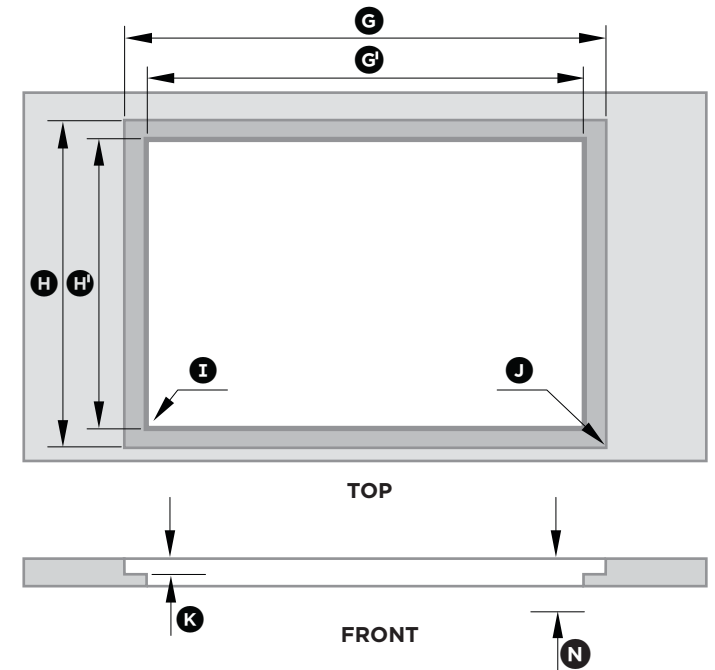
Note: Ensure there is an earthed power outlet within 900 mm of the centre rear of the product. The gas connector on the wall should be 800-850 mm (H) above the floor and to a distance of at least 250 mm (G) outside the width of the product, on the right-hand side. It should be accessible with the product installed.

6 FLUSH MOUNTING INSTALLATION (OPTIONAL)



⚠ WARNING!

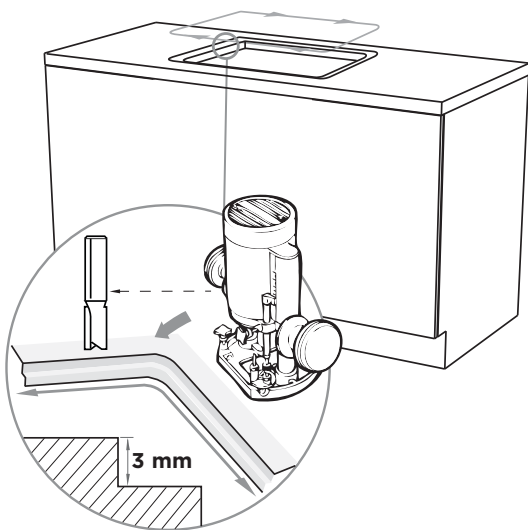
We do not recommend flush mounting and sealing as servicing requires the cooktop to be removed from the benchtop. The owner carries all risk for flush mounting the cooktop. The owner must ensure the cooktop has been cut out from the benchtop before servicing can be carried out. Fisher & Paykel will not be liable for any costs associated with removing or replacing a flush-mounted and/or sealed-in product, nor for repairing any damage that may be incurred by doing this.



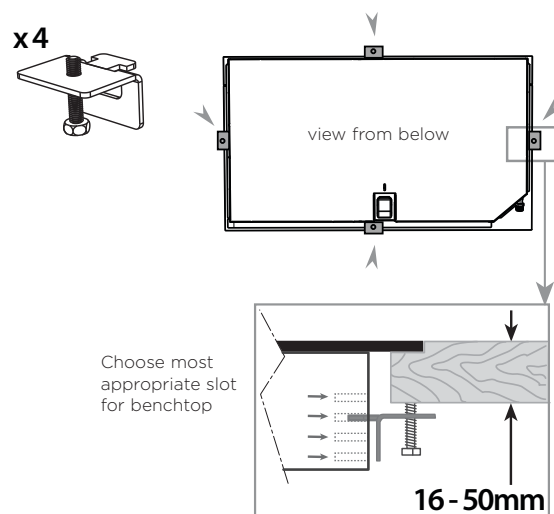
PRODUCT AND CABINETY DIMENSIONS	CG301D	CG451D	CG752D	CG903D
	mm	mm	mm	mm
(A) Overall height of product (excluding burners, dials and pan supports)	64	64	64	64
(B) Overall width of product	300	450	750	900
(C) Overall depth of product	530	530	450	450
(D) Height of chassis (below top of bench)	59	59	59	59
(E) Width of chassis	256	406	706	856
(F) Depth of chassis	486	486	410	410
(G) Overall width of routed recess	305	455	755	905
(G') Width of cutout	260	415	715	865
(H) Overall depth of routed recess	535	535	455	455
(H') Depth of cutout	490	490	410	410
(I) Corner radius of cutout	max. 10	max. 10	max. 10	max. 10
(J) Corner radius of routed recess	max. 2	max. 2	max. 2	max. 2
(K) Height of routed recess	5	5	5	5
(L) Distance from top of bench to centre of gas inlet on product	35	35	35	35
(M) Distance from edge of chassis to gas inlet on product	21	21	21	21
(N) Minimum clearance below top of benchtop to: rear top of oven* installed below cooktop or cabinetry thermal protection barrier	75 70	75 70	75 70	75 70

⑥ FLUSH MOUNTING INSTALLATION (OPTIONAL)

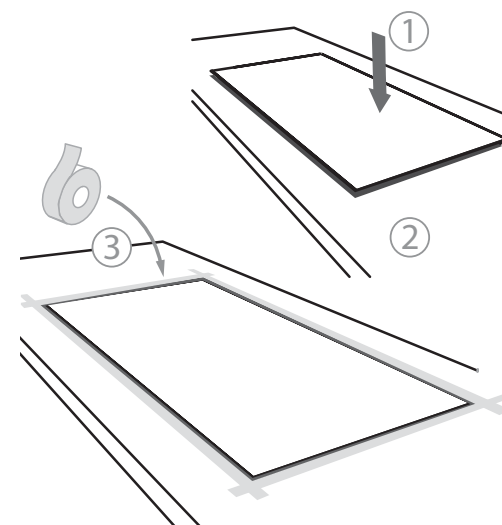
① ROUTER THE BENCHTOP TO THE SPECIFIED DEPTH



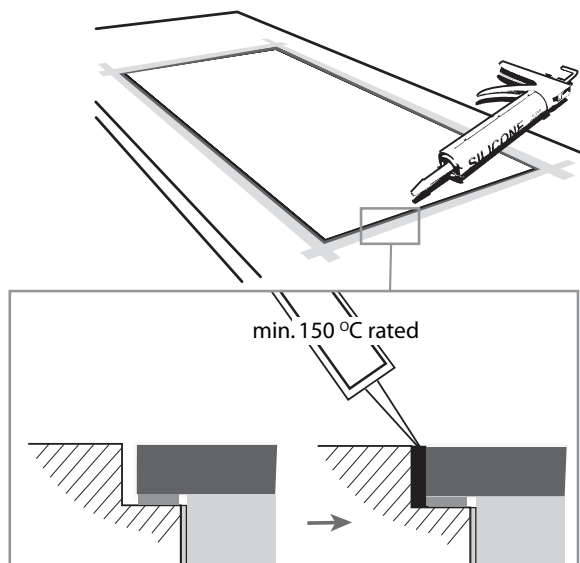
② FIT THE CLAMPING BRACKETS



③ MASK OFF THE AREA TO BE SILICONED

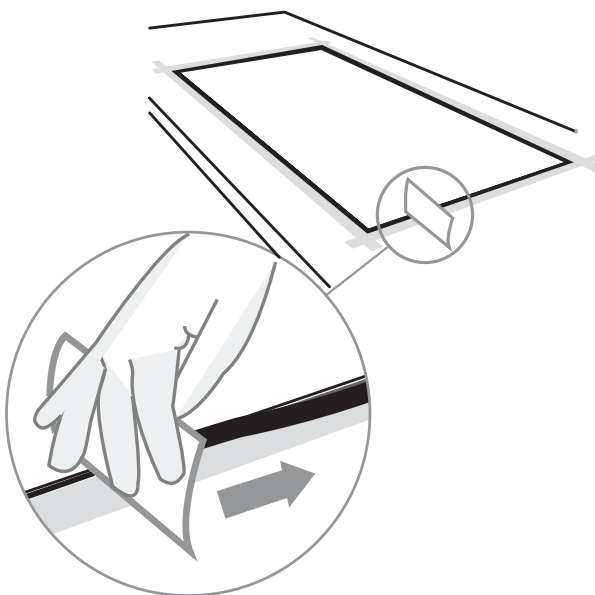


④ APPLY SILICONE

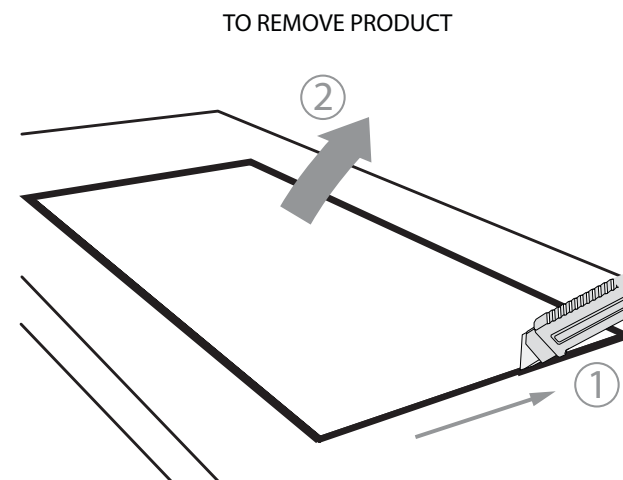


Ensure silicone does not leak underneath the glass.

⑤ WIPE OFF EXCESS SILICONE

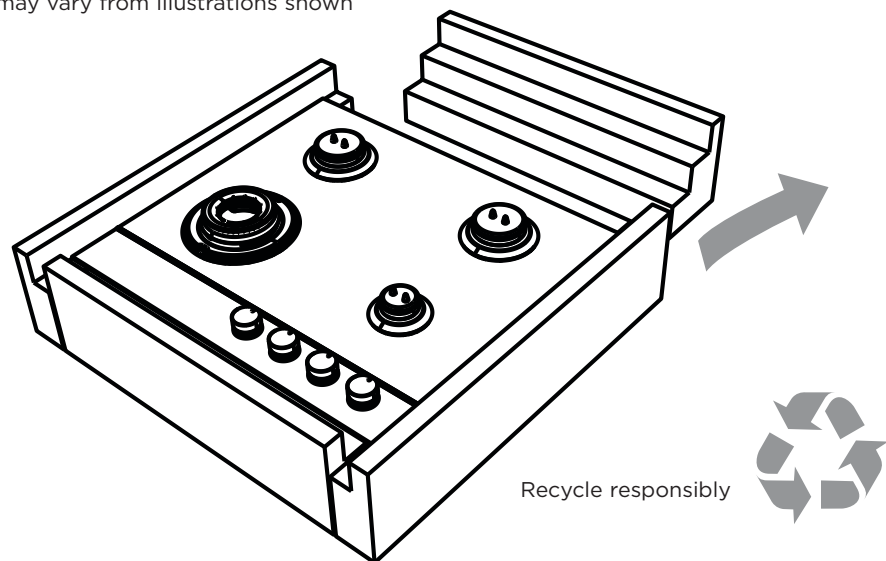


⑥ IF REMOVING PRODUCT, CUT AROUND THE SILICONE

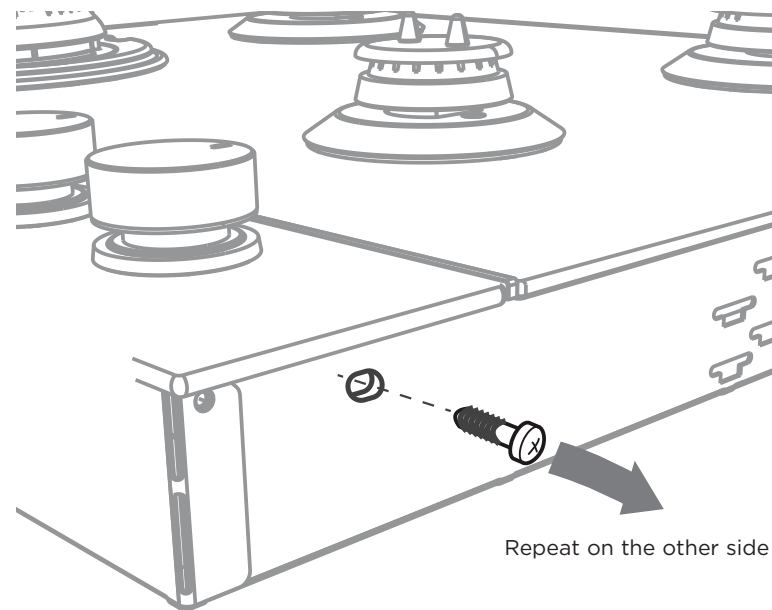


7 DISCARD PACKAGING

Model may vary from illustrations shown

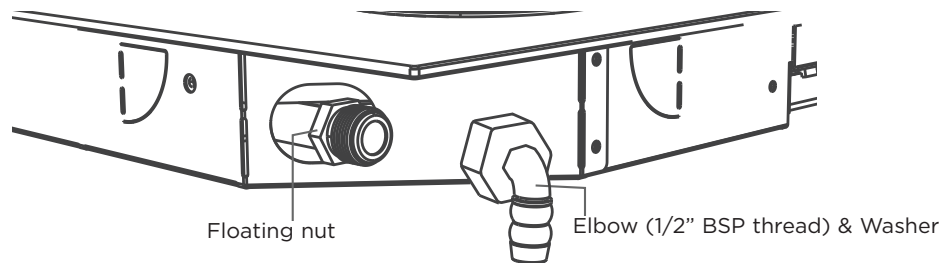


8 REMOVE THE TWO TRANSIT SCREWS

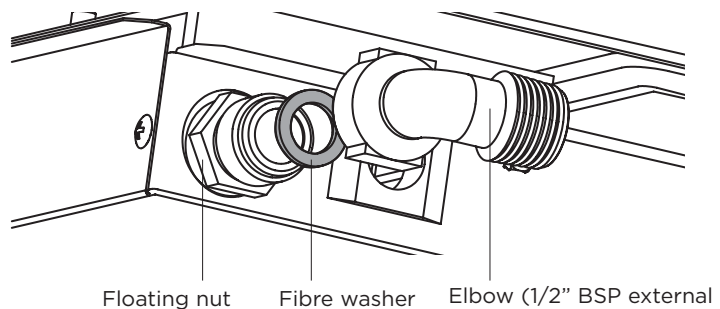


9 FIT THE ELBOW AND WASHER

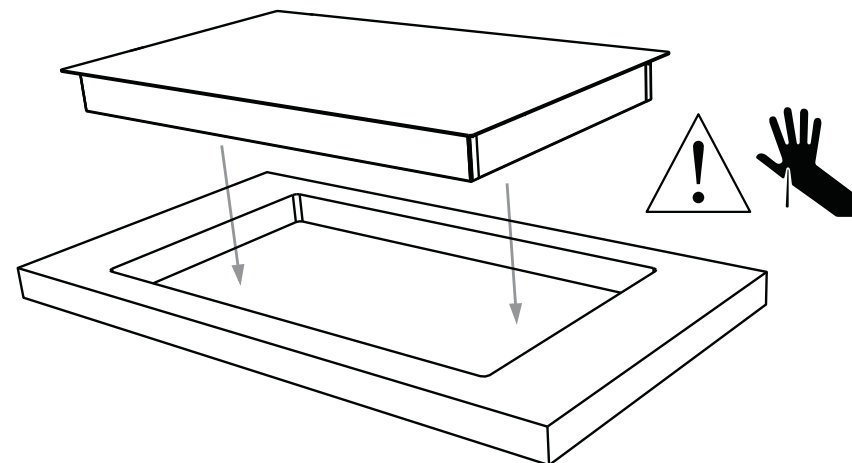
HONG KONG



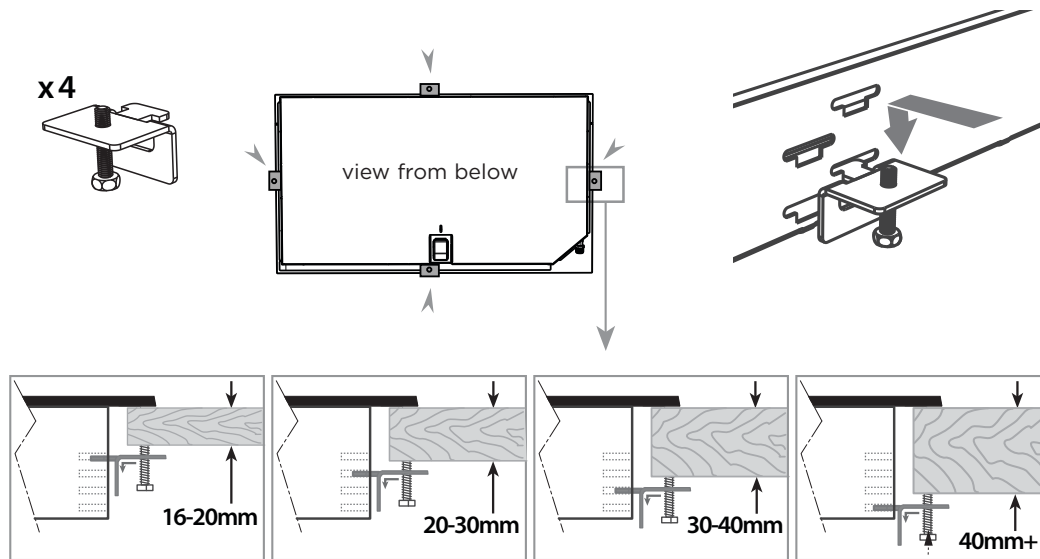
SINGAPORE



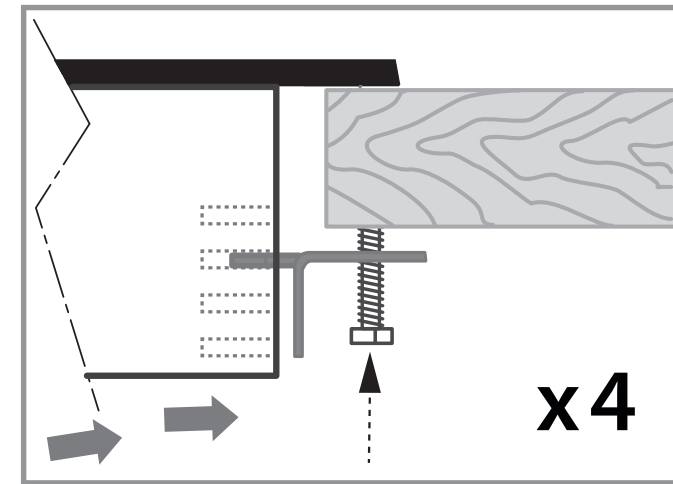
10 LOWER GENTLY INTO THE CUTOUT



11 FIT CLAMPING BRACKETS BASED ON THE BENCHTOP THICKNESS



12 SECURE TO BENCHTOP



Repeat on all the other sides

13 CONNECT TO GAS SUPPLY

LPG

- Make sure the **supply pressure is regulated to 2.90 kPa**, with all the burners operating at highest setting.

TG

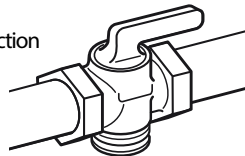
- Adjust to obtain a supply pressure of 1.5 kPa (Hong Kong) or 0.8 kPa (Singapore) with all the burners operating at the highest setting.

ALL Models

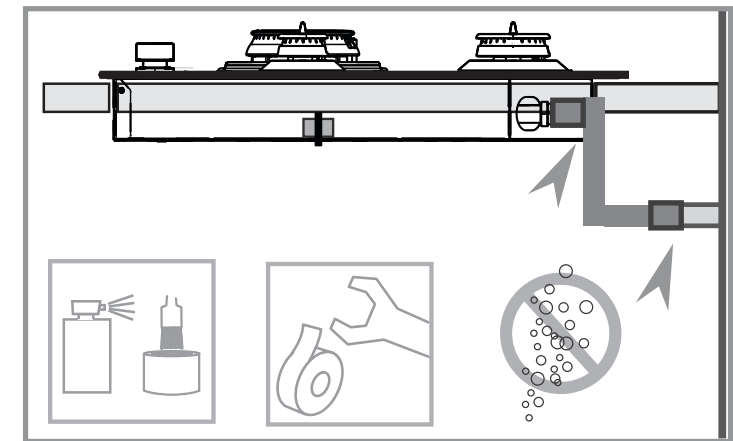
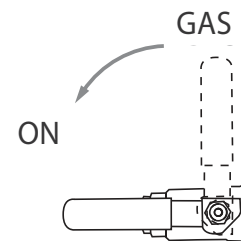
- Make sure the connection point will be accessible with the cooktop installed.
- To enable the gas supply to be readily shut off by the customer, make sure the connection is fitted with an isolating valve close to the cooktop.

If connecting the gas with a flexible hose:

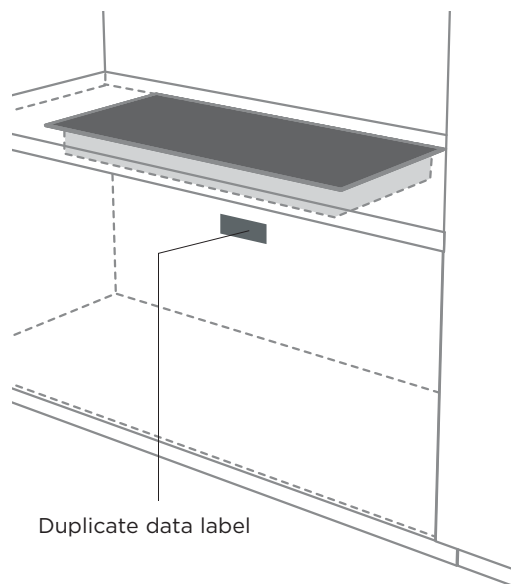
- Ensure the hose is long enough to allow for removal of cooktop for servicing.
- Make sure the connector is located as shown in step 5 CLEARANCE DIMENSIONS.
- The hose assembly must be certified, with an Rp 1/2" (ISO 7-1) female thread connection.
- The hose assembly must be as short as practicable and comply with relevant local code and regulation requirements.
- The hose must not be kinked, subjected to abrasion or permanently deformed.
- The hose must not be near or in contact with any hot surfaces (e.g. base of metal hotplate, flue, or chassis of underbench oven etc.)



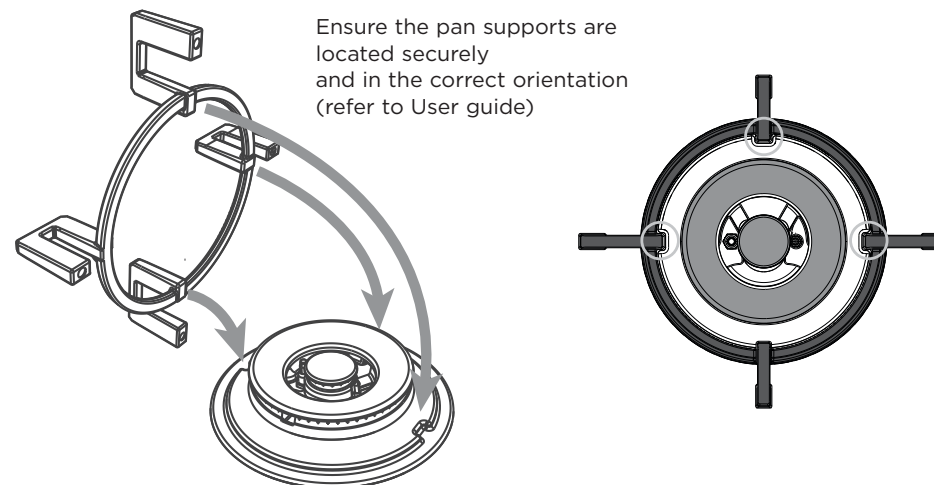
14 CHECK ALL CONNECTIONS FOR GAS LEAKS



14 AFFIX DUPLICATE DATA LABEL SOMEWHERE ACCESSIBLE & PLUG COOKTOP IN

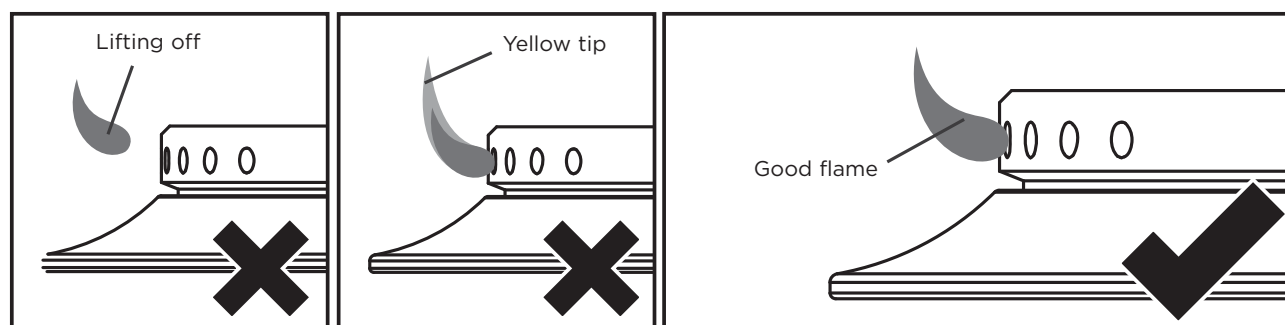


15 FIT PAN SUPPORTS



16 TEST OPERATION

- To check that the ignition system operates correctly, light each burner by itself, then all burners in combination.
- Check for a well-defined blue flame without any yellow tipping.
- If any abnormality is evident, check that the components of the burner assembly are located properly
- If proper operation cannot be obtained, contact Customer Care or your nearest F&P Authorized Service Center.
- The cooktop must not be used by the customer until proper operation has been achieved.





TO BE COMPLETED BY THE INSTALLER

- ☐ Have you installed the clamping brackets?
- ☐ Have you verified that the type of model (factory-set for NG or LP) matches the type of gas at the site of installation?
- ☐ Have you used the Elbow supplied?
- ☐ Have you sealed all connections with gas tape?
- ☐ Have you leak-tested all connections?
- ☐ Is the cooktop set to the correct working pressure?
- ☐ Have you affixed the supplied duplicate data plate label on an adjacent surface accessible to the customer?
- ☐ Is the cooktop earthed?
- ☐ Check that the power supply cord is NOT touching the cooktop.

OPERATION:

- ☐ Do all burners ignite both individually and in combination?
- ☐ Are the flames consistent and appropriately sized?
- ☐ Have you demonstrated the basic operation to the customer?

Complete and keep for safe reference:

Model _____

Serial No. _____

Purchase Date _____

Purchaser _____

Dealer Address _____

Installer's Name _____

Installer's Signature _____

Installation Company _____

Installation Date _____

Copyright © Fisher & Paykel Appliances Ltd. 2015. All rights reserved.
The product specifications in this booklet apply to the specific products and models described at the date of issue. Under our policy of continuous product improvement, these specifications may change at any time. You should therefore check with your Dealer to ensure this booklet correctly describes the product currently available.

安裝說明書

氣體煮食爐

CG301D型, CG451D型、CG752D型和CG903D型

HK SG

Fisher & Paykel

www.fisherpaykel.com

590631C 02.16

⚠ 警告！



觸電危險

在處理氣體煮食爐的電氣部分之前，必須斷開總電源。

必須連接良好接地線。

如果要改動室內佈線，必須由資深電工進行改動。

如不遵照此建議，可能會造成觸電甚至死亡。

⚠ 警告！



割傷危險

小心 — 面板邊沿很鋒利。

如不小心，可能會造成人身傷害或割傷。

重要安全須知！

- 必須特別注意相關的通風要求。
- 在安裝氣體煮食爐之前仔細閱讀本說明書。
- 請讓氣體煮食爐安裝人員閱讀本說明書，因為這可以降低安裝成本。
- 氣體煮食爐只能由授權人士進行安裝和維修。
- 必須按照當地的建築法規和電氣法規要求進行安裝。
- 安裝不當可能會造成人身傷害或財物損失，製造商對此不承擔任何責任，保固或責任求償自動失效。
- 氣體煮食爐在出廠前設定為使用液化石油氣，香港或新加坡煤氣。如有疑慮，請向當地供氣公司諮詢，確認安裝點供應哪種氣體。
- 切勿改動氣體煮食爐。
- 切勿在氣體煮食爐上或周圍使用或存放易燃物。
- 切勿在使用氣體煮食爐時在周圍噴氣霧劑。
- 在安裝過程中和安裝之後，切勿把包裝材料（例如塑膠袋、聚苯乙烯泡沫、搭扣和包裝帶）放在氣體煮食爐附近，尤其不能放在兒童夠得到的地方，否則可能會造成嚴重人身傷害。
- 必須在安裝氣體煮食爐之前卸下固定螺絲。參看安裝說明第8步。

重要！

妥善保存本說明書

本說明書所述的型號並非在所有市場上銷售，隨時會有變動。如要詳細瞭解本國/本地區銷售的型號和規格，請登錄本指南封底列出的地區網站，或者聯絡當地的斐雪派克經銷商。

在安裝氣體煮食爐之前確保：

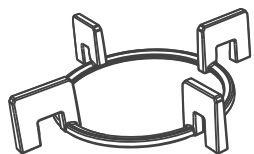
- 當地的供氣條件（氣體類型和壓力）與氣體煮食爐調節條件一致。參看**氣體氣速摘要**一節瞭解氣體煮食爐的調節條件。
- 在永久性佈線中安裝一個符合當地佈線法規要求的合適斷路開關。根據當地的佈線法規，安裝在固定佈線系統裡的斷路開關的所有電極的觸點氣隙間隔為3mm，除非當地佈線法規允許採用替代方法。
- 氣體煮食爐連接220V-240V 50Hz (10A)電源，並通過電源線中的地線接地。
- 氣體煮食爐旁邊有電源插座。在安裝氣體煮食爐之後，插座所在位置必須便於使用者插拔插頭。電源線不得接觸任何金屬零件。
- 如果電源線破損，必須用斐雪派克授權維修代理商提供的專用電源線更換：零件編號533578 — Flex端子塊CN。參看**維修和保固**小冊子瞭解聯絡資料。
- 在安裝氣體煮食爐之後，氣源接頭（氣體截流閥）所在位置必須便於使用者開關氣體。

- 灶台用耐熱材料製成。
- 氣體煮食爐安裝符合國家和當地供氣公司、供電公司的要求和其他相關法律法規的要求。

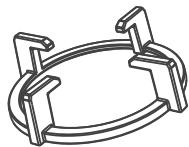
在安裝氣體煮食爐時

- 建議你不要採用與灶台齊平方式安裝氣體煮食爐，不要用矽膠或膠水把氣體煮食爐固定在灶台上，否則日後很難維修。斐雪派克不承擔與拆卸或安裝膠粘氣體煮食爐相關的任何費用，對在此過程中可能發生的修理損壞不承擔任何責任。
- 如果安裝符合法規要求的軟管，軟管不應接觸氣體煮食爐底面或任何鋒利邊沿。軟管必須符合當地法規要求。
- 開口裸露邊沿用油漆或防水聚氨酯密封，防止濕氣滲入氣體煮食爐邊沿和灶台之間。
- 在安裝過程中切勿讓玻璃表面破碎、開裂或破裂。重金屬工具或零件不慎跌落在玻璃上可能會損壞玻璃。
- 如果在根據氣體煮食爐安裝說明安裝之後，氣體煮食爐達不到要求的性能，請聯絡客戶服務部，或者登錄本指南封底列出的地區網站聯絡我們。

② 提供的零件



雙鐵鍋架
(每個雙鐵鍋配1個)



中火平底鍋架(1)
(僅CG903D)



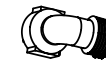
小平底鍋架(1)



鐵鍋架
(每個雙鐵鍋配1個)



氣體彎頭(1)



彎頭 $\frac{1}{2}$ " BSP
外螺紋(1)



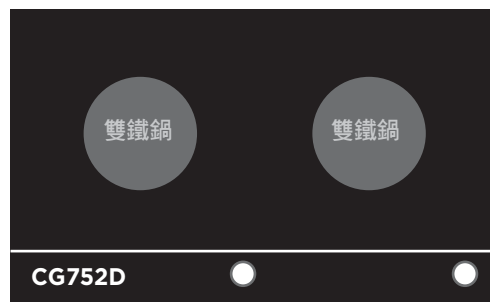
固定支架(4)
和螺絲(4)

安裝多台氣體煮食爐

注意：如果在同一個開口內並排安裝多台氣體煮食爐（建議不要這麼做），需要使用單獨的組合帶套件。
可以在客戶服務部購買組合帶套件，也可以登錄本指南封底列出的地區網站購買組合帶套件。

③ 氣體氣速摘要

所有氣體煮食爐在出廠前設定為使用液化石油氣，但可以轉換使用煤氣。參看把氣體煮食爐連接到不同的氣體接頭上一節。



香港

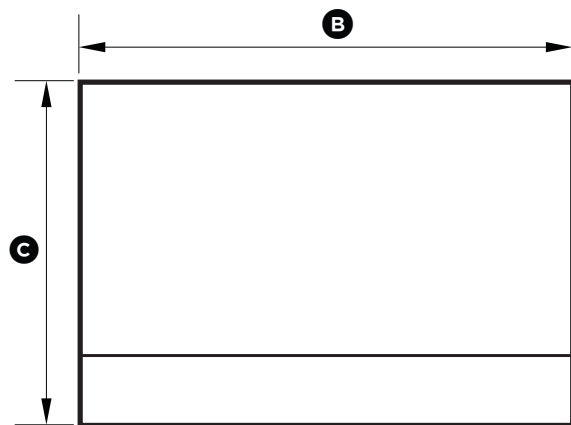
爐頭	CG301D		CG451D		CG752D		CG903D			
	雙鐵鍋		雙鐵鍋		雙鐵鍋		中火		雙鐵鍋	
	噴管直徑 (mm)	額定值 (kW)	噴管直徑 (mm)	額定值 (kW)	噴管直徑 (mm)	額定值 (kW)	噴管直徑 (mm)	額定值 (kW)	噴管直徑 (mm)	額定值(kW)
煤氣 (G110) (1.5 kPa/15 mbar)*	2.60	5.60	2.50	5.30	2.30	4.68	1.55	2.36	2.30	4.68
	2.60		2.50		2.30				2.30	
	1.50		1.30		1.10				1.10	
液化石油氣 (G30) (2.9 kPa/29 mbar)*	0.80	5.50	0.80	5.10	0.73	5.00	0.76	2.28	0.73	5.00
	0.80		0.80		0.73				0.73	
	0.50		0.50		0.50				0.50	

新加坡

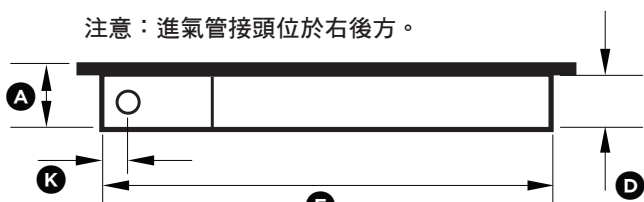
爐頭	CG301D		CG451D		CG752D		CG903D			
	雙鐵鍋		雙鐵鍋		雙鐵鍋		中火		雙鐵鍋	
	噴管直徑 (mm)	額定值 (kW)	噴管直徑 (mm)	額定值 (kW)	噴管直徑 (mm)	額定值 (kW)	噴管直徑 (mm)	額定值 (kW)	噴管直徑 (mm)	額定值(kW)
煤氣 (G110) (0.8 kPa/8 mbar)*	3.50	5.50	2.50	4.00	2.50	4.68	2.07	2.20	2.50	4.68
	3.50		2.50		2.50				2.50	
	1.50		1.30		1.30				1.30	
液化石油氣 (G30) (2.9 kPa/29 mbar)*	0.80	5.50	0.80	5.10	0.73	5.00	0.76	2.28	0.73	5.00
	0.80		0.80		0.73				0.73	
	0.50		0.50		0.50				0.50	

* 一個雙鐵鍋爐頭打到最大時的額定壓力。

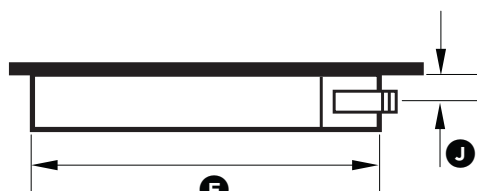
④ 氣體煮食爐尺寸和櫥櫃尺寸



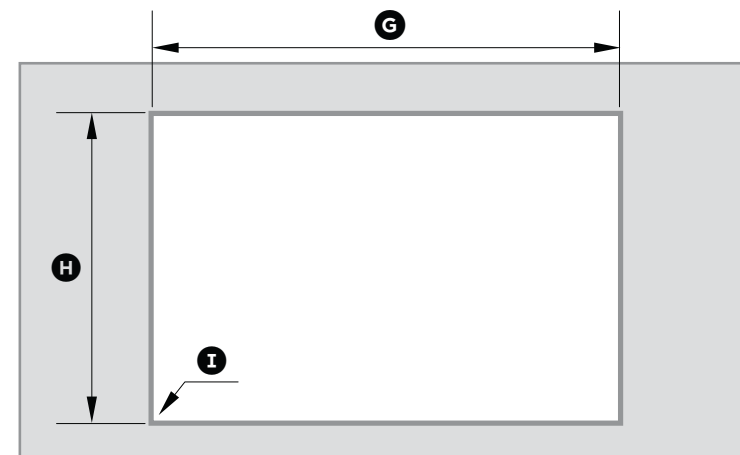
頂面



背面



側面



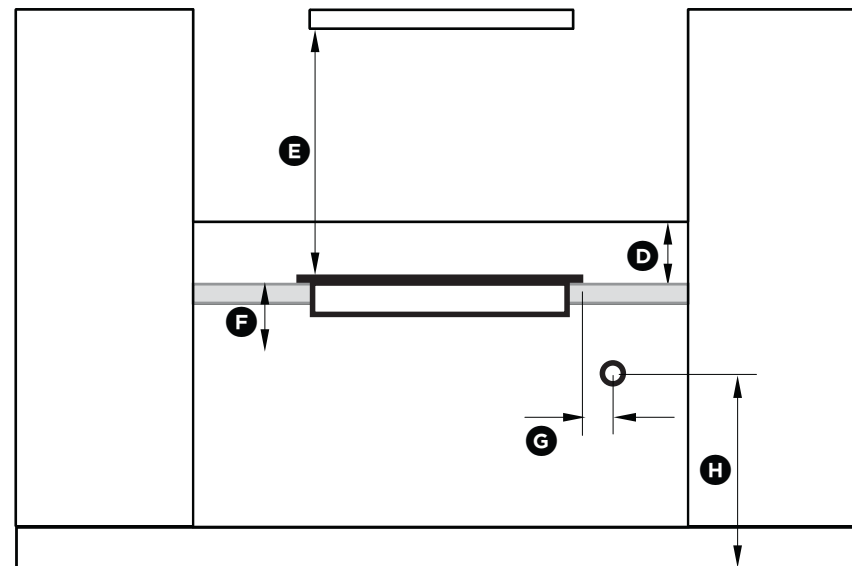
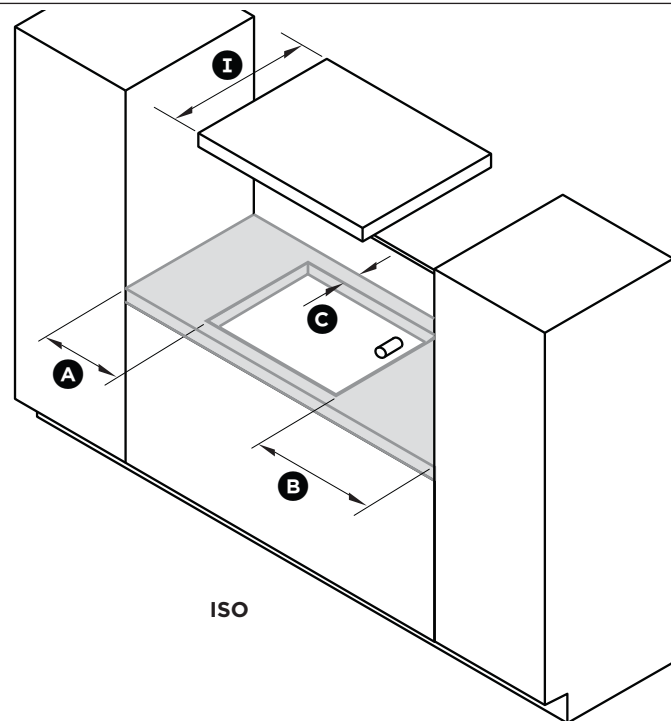
頂面



正面

氣體煮食爐尺寸和櫥櫃尺寸	CG301D	CG451D	CG752D	CG903D
	mm	mm	mm	mm
(A) 氣體煮食爐總高度（不包括爐頭、旋鈕和平底鍋架）	64	64	64	64
(B) 氣體煮食爐總寬度	300	450	750	900
(C) 氣體煮食爐總深度	530	530	450	450
(D) 底板高度（灶台上表面之下）	59	59	59	59
(E) 底板寬度	256	406	706	856
(F) 底板深度	486	486	410	410
(G) 開口總寬度	260	415	715	865
(H) 開口總深度	490	490	410	410
(I) 開口轉角半徑	最大. 10	最大. 10	最大. 10	最大. 10
(J) 灶台上表面到氣體煮食爐進氣管中心的距離	30	30	30	30
(K) 底板邊沿到氣體煮食爐進氣管的距離	21	21	21	21

⑤ 間隙尺寸

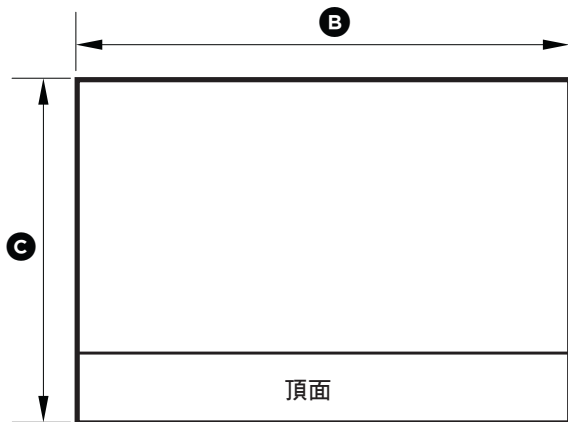


正面

間隙尺寸	CG301D	CG451D	CG752D	CG903D
	mm	mm	mm	mm
Ⓐ 開口左邊到最近的可燃性表面的最小間隙	120	60	115	115
Ⓑ 開口右邊到最近的可燃性表面的最小間隙	120	60	115	115
Ⓒ 開口後邊到下列各項的最小間隙：				
最近的可燃性表面	85	85	125	125
最近的非可燃性表面	45	45	45	45
Ⓓ 在背面牆壁上使用的非可燃性材料的最小高度	150	150	150	150
Ⓔ 玻璃表面到下列各項的最小間隙：				
抽油煙機	650	650	650	650
其他懸空排氣扇	800	800	800	800
面朝下的可燃性表面	650	650	650	650
面朝下的瓷磚或耐火表面	500	500	500	500
Ⓕ 灶台上表面到下列各項的最小間隙：				
可燃性表面	70	70	70	70
斐雪派克烤箱或最近的非可燃性表面	65	65	65	65
Ⓖ 氣體煮食爐右邊到牆壁上進氣管接頭的最小距離（如果使用軟管）	250	250	250	250
Ⓗ 從地面距離氣牆的連接點（如果使用軟管）	極少 800 - 最大 850	極少 800 - 最大 850	極少 800 - 最大 850	極少 800 - 最大 850
Ⓘ 吊櫃最大總深度	600	600	600	600

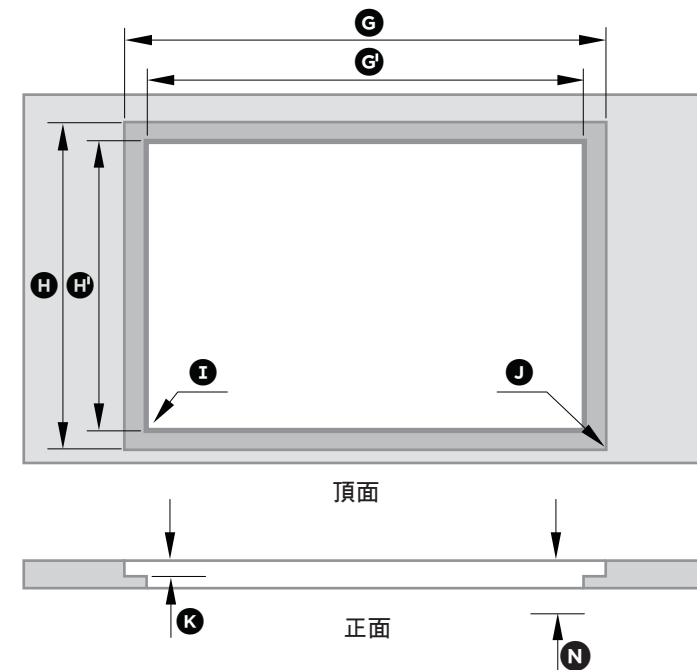
注意：確保氣體煮食爐要插的電源插座有地線。牆壁上的進氣管接頭應該位於氣體煮食爐右邊，距氣體煮食爐的距離至少250mm (G)。在安裝氣體煮食爐之後，進氣管接頭應該位於操作閥門。

⑥ 與灶台齊平式安裝（不建議）

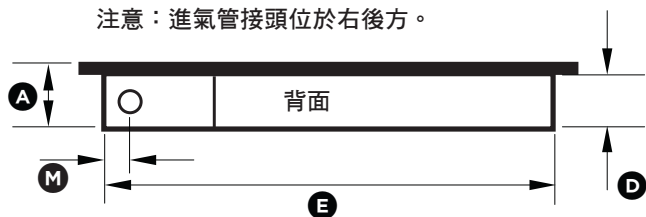


警告！

建議你不要採用與灶台齊平方式安裝氣體煮食爐，不要用矽膠或膠水把氣體煮食爐固定在灶台上，因為在維修氣體煮食爐時需要把它從灶台上取下來。如果採用與灶台齊平方式安裝氣體煮食爐，使用者要承擔所有維修風險。用戶必須確保把氣體煮食爐從灶台上取下來，才能進行維修。如果採用與灶台齊平方式和/或膠粘方式安裝氣體煮食爐，斐雪派克不承擔與拆卸或安裝氣體煮食爐相關的任何費用，對氣體煮食爐在此過程中可能發生的損壞不進行修理。



注意：進氣管接頭位於右後方。

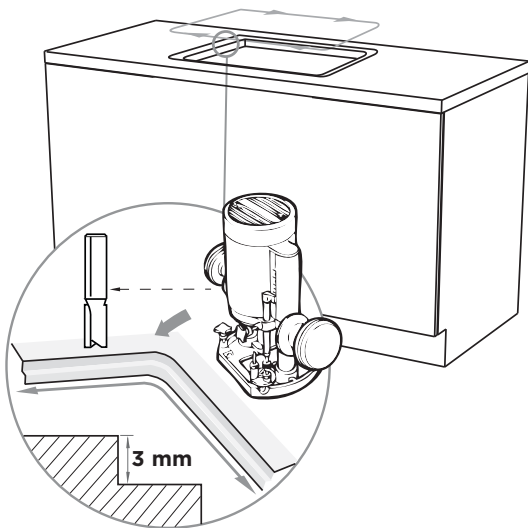


氣體煮食爐尺寸和櫥櫃尺寸

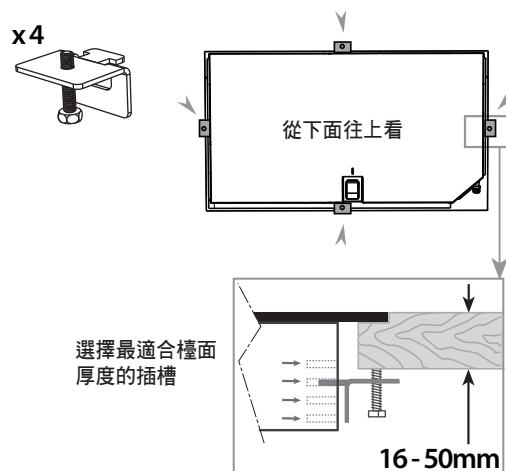
	CG301D	CG451D	CG752D	CG903D
	mm	mm	mm	mm
Ⓐ 氣體煮食爐總高度（不包括爐頭、旋鈕和平底鍋架）	64	64	64	64
Ⓑ 氣體煮食爐總寬度	300	450	750	900
Ⓒ 氣體煮食爐總深度	530	530	450	450
Ⓓ 底板高度（灶台上表面之下）	59	59	59	59
Ⓔ 底板寬度	256	406	706	856
Ⓕ 底板深度	486	486	410	410
Ⓖ 刨槽開口總寬度	305	455	755	905
Ⓖ' 開口寬度	260	415	715	865
Ⓗ 刨槽開口總深度	535	535	455	455
Ⓗ' 開口深度	490	490	410	410
Ⓘ 開口轉角半徑	最大. 10	最大. 10	最大. 10	最大. 10
Ⓙ 刨槽轉角半徑	最大. 2	最大. 2	最大. 2	最大. 2
Ⓚ 刨槽高度	5	5	5	5
Ⓛ 灶台上表面到氣體煮食爐進氣管中心的距離	35	35	35	35
Ⓜ 底板邊沿到氣體煮食爐進氣管的距離	21	21	21	21
Ⓝ 灶台上表面到下列各項的最小間隙：				
可燃性表面	75	75	75	75
斐雪派克烤箱或最近的非可燃性表面	70	70	70	70

⑥ 與灶台齊平式安裝（不建議）

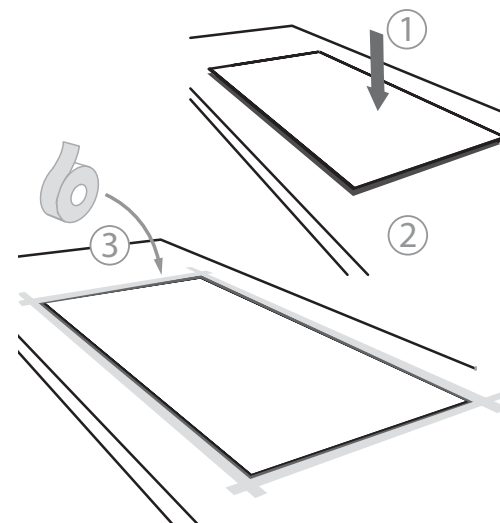
① 在灶台上刨出指定的深度



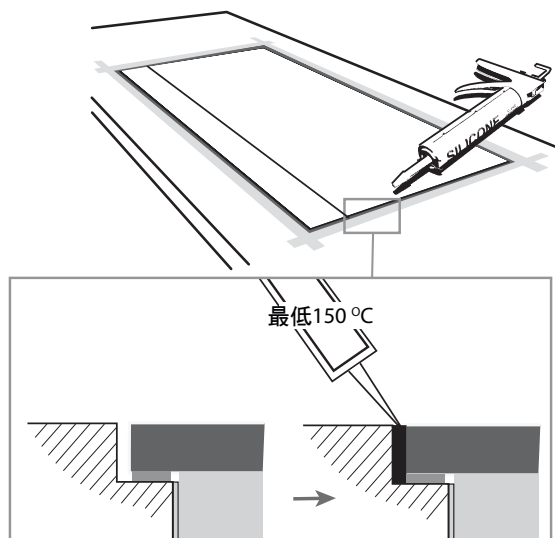
② 安裝固定支架



③ 用膠帶紙貼住要塗矽膠的地方

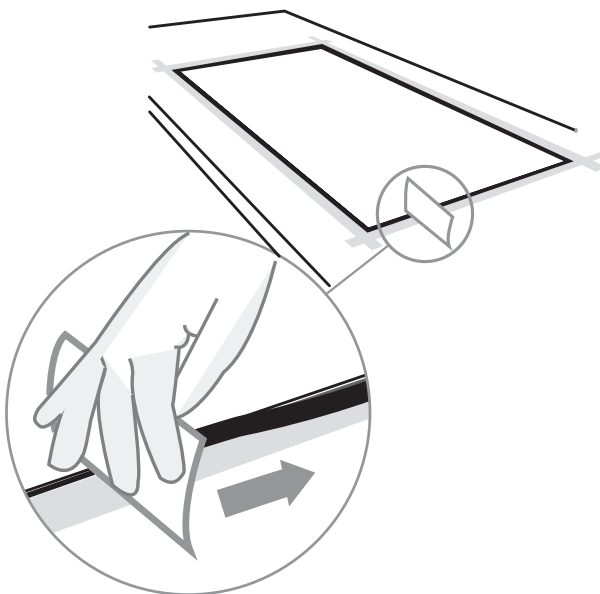


④ 塗矽膠

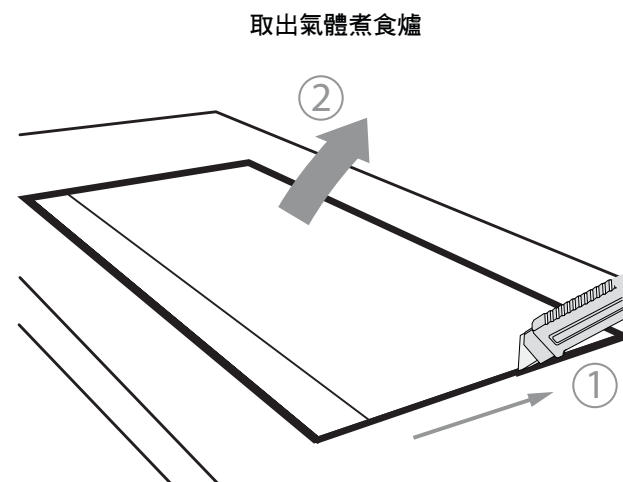


確保矽膠不流到玻璃下面。

⑤ 擦掉多餘矽膠

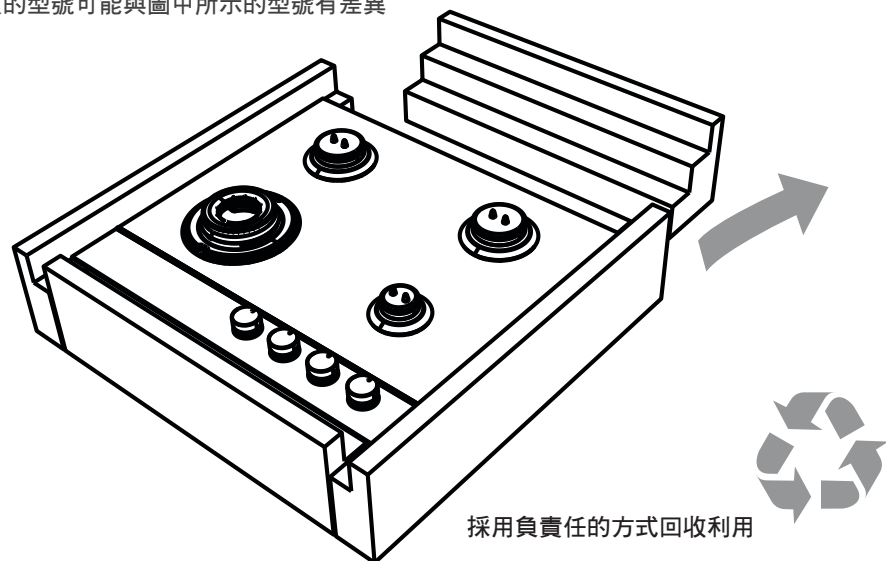


⑥ 取出氣體煮食爐切掉四周的矽膠

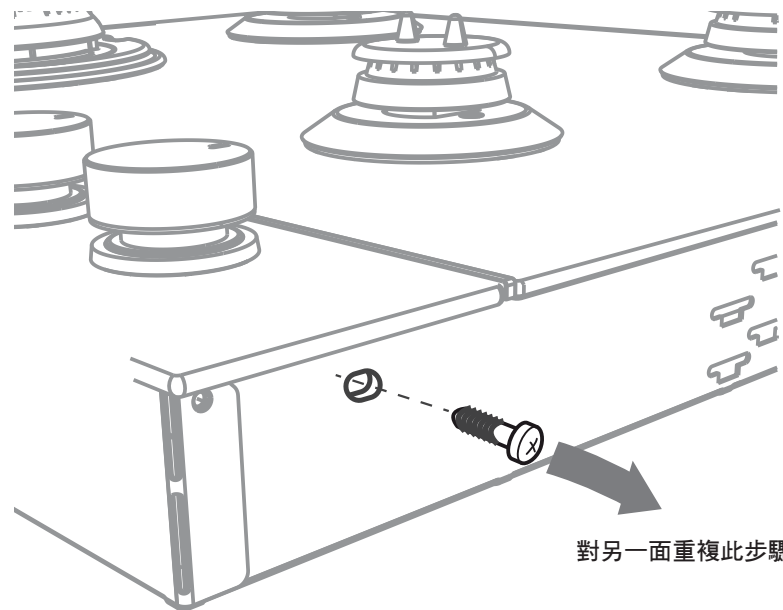


⑦ 處置包裝材料

你購買的型號可能與圖中所示的型號有差異

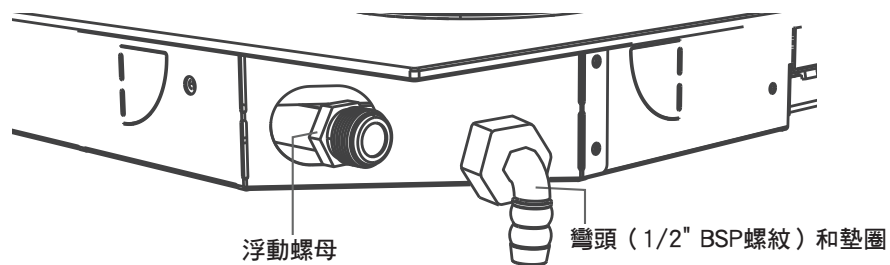


⑧ 卸下兩個運輸固定螺絲

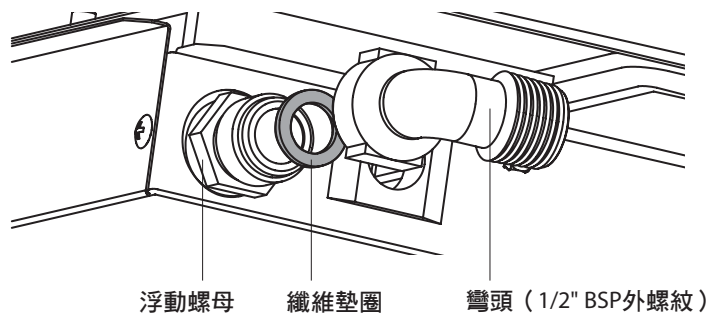


⑨ 安裝彎頭和墊圈

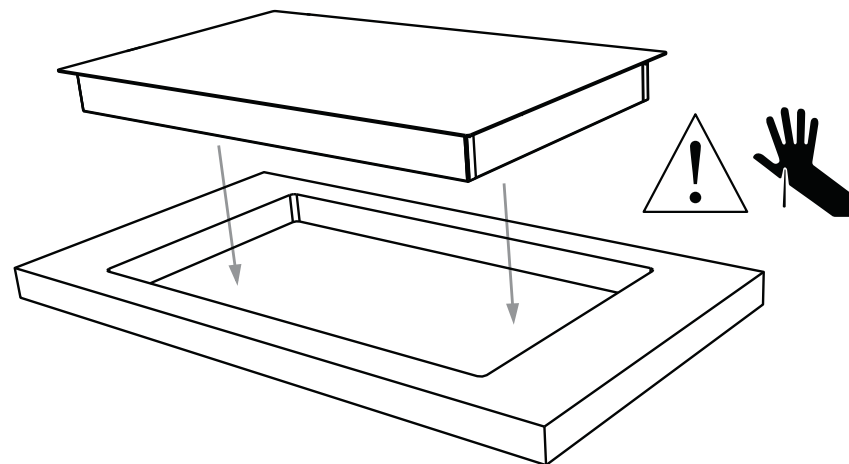
香港



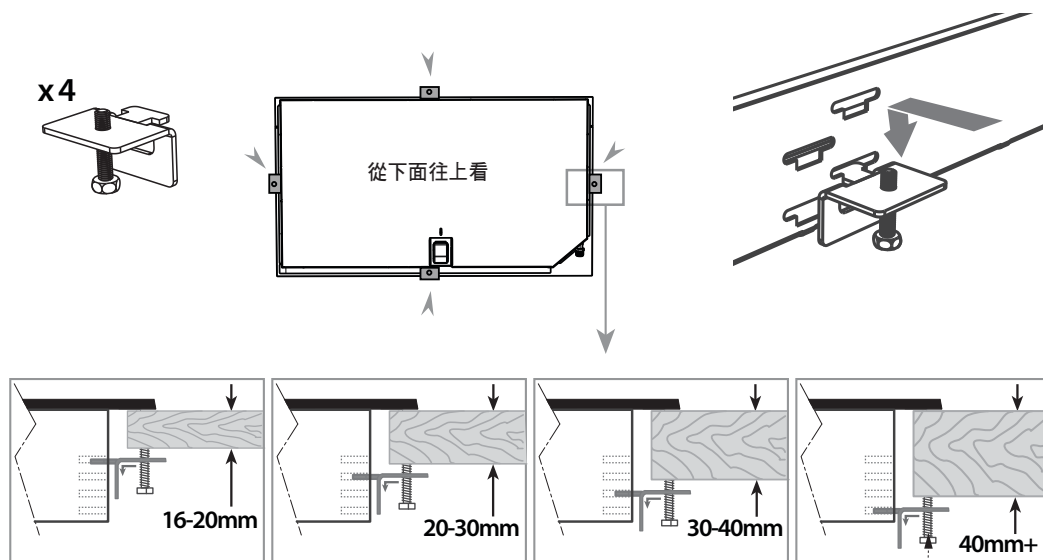
新加坡



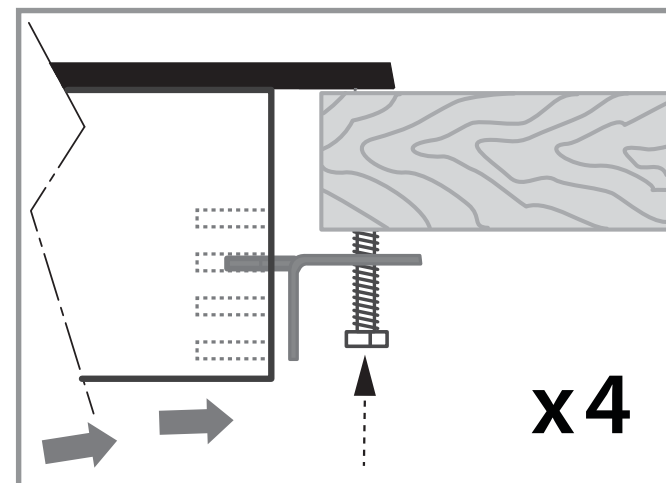
⑩ 慢慢放入開口內



⑪ 根據檯面厚度安裝固定支架



⑫ 固定在檯面上



對其他三面重複此步驟

⑬ C連接氣源

液化石油氣

- 確保把壓力調節到2.90 kPa，把所有爐頭打到最大火力。

煤氣

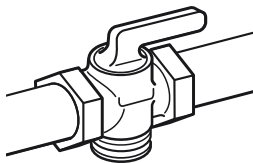
- 確保把壓力調節到1.5 kPa（香港）或0.8 kPa（新加坡），把所有爐頭打到最大火力。

所有型號

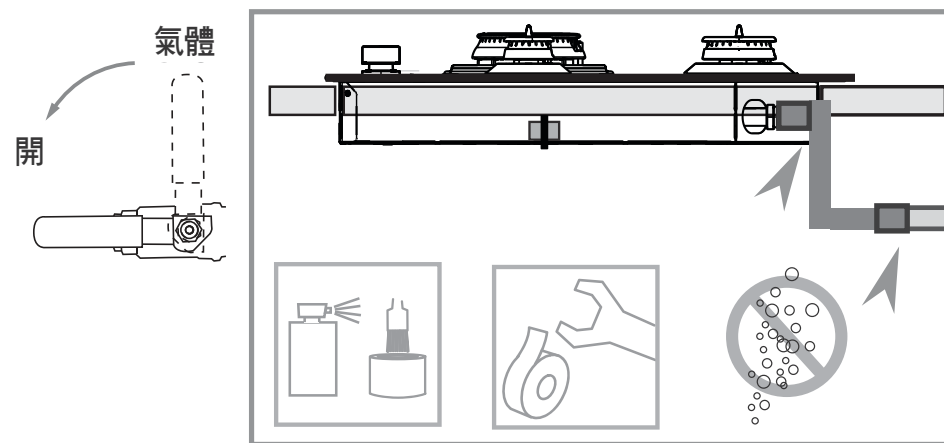
- 確保接頭在安裝氣體煮食爐之後便於接觸。
- 為了便於斷開氣源，確保在靠近氣體煮食爐的地方安裝隔離閥。

如果用軟管連接氣源：

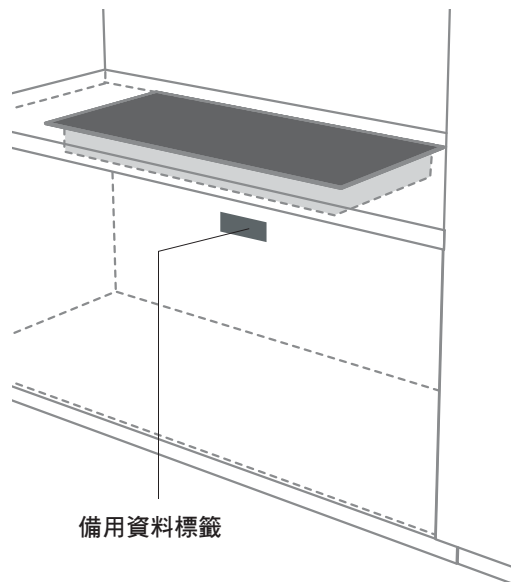
- 確保軟管足夠長，便於拆除氣體煮食爐進行維修。
- 確保接頭位置間隙如第5步所述。
- 軟管必須是通過認證的Rp ½" (ISO 7-1)母螺紋。
- 軟管必須盡可能短，必須符合當地相關法律法規的要求。
- 軟管不得打結，否則容易造成磨損或永久性變形。
- 軟管不得靠近或接觸任何發熱表面（例如金屬發熱板底部、煙道或灶台下面的烤箱底板等）。



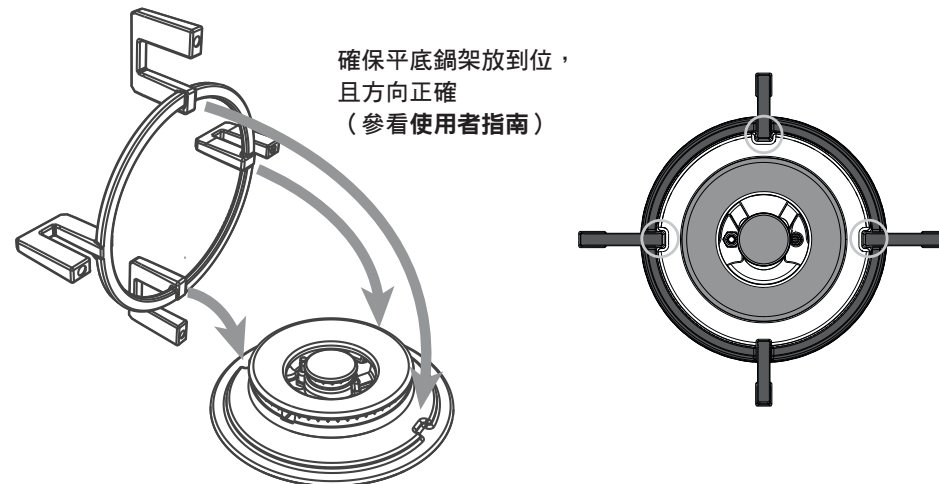
⑭ 檢查所有接頭是否漏氣



⑭ 在看得見的地方貼上備用資料標籤並插好氣體煮食爐電源插頭



⑮ 安裝平底鍋架



⑯ 測試工作

- 分開點燃每個爐頭，然後點燃所有爐頭，檢查點火系統是否正常工作。
- 檢查火焰是否呈藍色，焰尾不帶黃色。
- 如果發現異常，檢查爐頭零件安裝是否正確。
- 如果無法實現正常工作，請聯絡客戶服務部。

在氣體煮食爐能正常工作之前，使用者不得使用氣體煮食爐。





下列檢查應該由安裝人員進行

- ☐ 是否安裝了固定支架？
- ☐ 是否確認了設備類型與安裝點的氣體類型相同？
- ☐ 是否安裝了隨機提供的彎頭？
- ☐ 所有接頭是否進行過漏氣測試？
- ☐ 是否給氣體煮食爐設定了合適的工作壓力？
- ☐ 是否在使用者能看到的相鄰表面上貼了隨機提供的備用資料標籤？

- ☐ 氣體煮食爐是否接地？
- ☐ 檢查電源插頭是否接觸氣體煮食爐。

操作：

- ☐ 所有爐頭是單獨點火還是同時點火？
- ☐ 火焰大小是否穩定合適？
- ☐ 你是否向客戶演示過基本操作？

完成並保持安全參考：

楷	_____
編號	_____
購買日期	_____
購買者	_____
經銷商地址	_____
安裝程序名稱	_____
安裝程序的簽名檔	_____
安裝公司	_____
安裝日期	_____

