

READ AND SAVE THIS GUIDE! WARNING!

Read Safety Guide. Failure to follow all guides and rules could cause personal injury or property damage. When using this appliance, always exercise basic safety precautions including the following:

- To avoid hazard due to instability of the appliance, it must be fixed in accordance with installation instructions.
- Ensure the installer has completed the final checklist in the installation guide.
- This appliance must be installed in accordance with the installation instructions before use.
- Stacking kit is only designed for house hold applications.
- Children should be supervised to ensure they do not play with the stacking kit.
- Do not swing on the stacking kits shelf.
- Appliances are heavy, we recommend 2 persons to move and install the appliance.

- This stacking kit can only be installed with compatible Fisher & Paykel appliances.
- For further installation instructions and compatible appliance models, go to fisherpaykel.com/specify and search by product name or model.

⚠ WARNING!	
	<p>Tip Hazard</p> <ul style="list-style-type: none"> • This product may tip. Keep children away and take care. Failure to follow this advice may result in injury. • This appliance is top-heavy and must be secured to prevent the possibility of tipping forward.

INSTALL STACKING KIT TO WASHER



1. Remove screws from washer using a screw driver or drill on the lowest torque setting.



2. Fit Brackets onto the rear of the washer.



3. Screw the brackets into place using a screw driver or drill on the lowest torque setting.

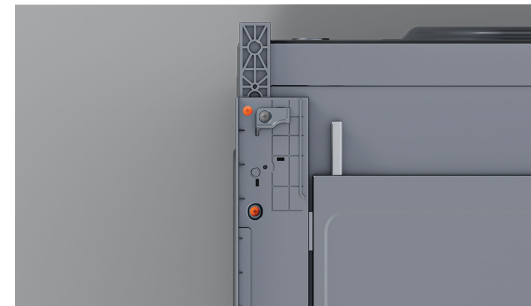
⚠ WARNING: Failure to tighten screws could create a tipping hazard.



4. Place the stacking kit over the bracket and line up the glass fronts so the two surfaces are flush.

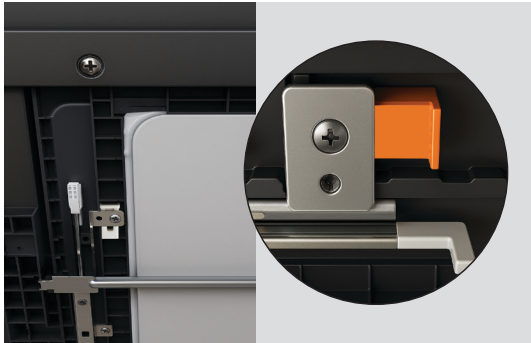


5. Ensure the stacking kit is centred to the washer. Peel off the VHB backing tabs and press down to secure the front of the stacking kit in place.



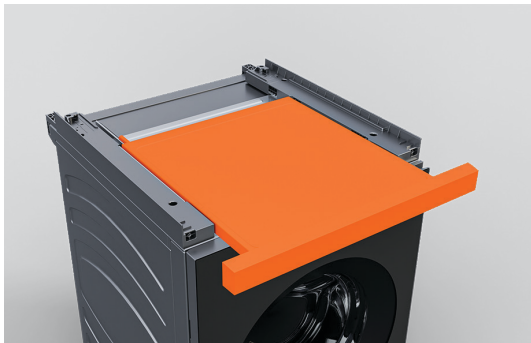
6. Fit two screws between the stacking kit and the brackets to secure the back of the stacking kit in place.

⚠ WARNING: Failure to tighten screws could create a tipping hazard.



7. Loosen the front screw and slide the shim towards the rear of the machine until there is sufficient clearance below the stacking kit tray.

Each side can be adjusted independently to provide a consistent gap.



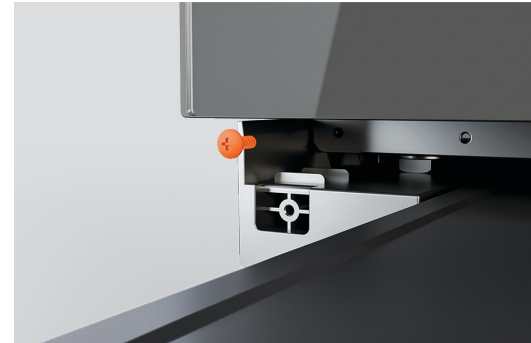
8. Push the front of stacking kit so stacking kit tray is partially open.



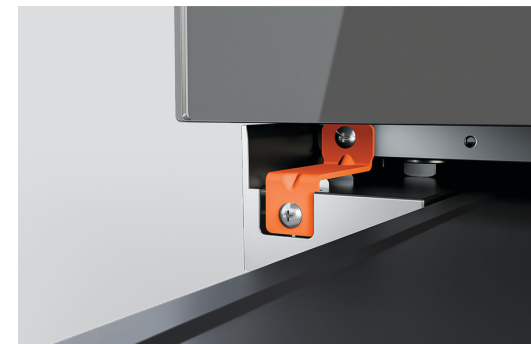
9. Lift the dryer over the stacking kit and slide the dryer back until it stops.

Ensure the front dryer feet do not catch on the front edge of the stacking kit and the dryer remains centred on the stacking kit. Close the tray and check there is sufficient clearance above the stacking kit.

If required, this gap can be increased by sliding the dryer forward, lowering the dryer feet, then sliding the dryer back into position.



10. Remove the screw from the front of the dryer then fit front brackets.



11. Re-fit screw to the dryer, and use supplied screw to secure brackets to stacking kit. Push the front of the stacking kit to close the tray.

⚠️ WARNING: Failure to tighten screws could create a tipping hazard.



12. Close the stacking kit tray and inspect the gaps above and below the stacking kit.

The gap below the stacking kit can be adjusted by repeating step 7.

The gap above the stacking kit can be adjusted by repeating step 9.