

QUICK START GUIDE

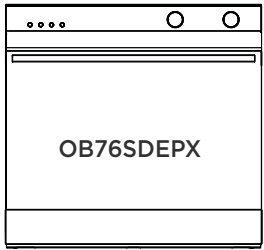
Aerotech oven  
NZ AU

Fisher&Paykel

Keep this document handy for easy reference.

- For detailed information on the other features of your oven, see your ‘User guide’.
- Before using your oven, make sure you read the full ‘User guide’, with special attention to the ‘Safety and warnings’ section.
- For contact information or if you require service, assistance or replacement parts, see the end of this document or your ‘Service & warranty’ booklet.

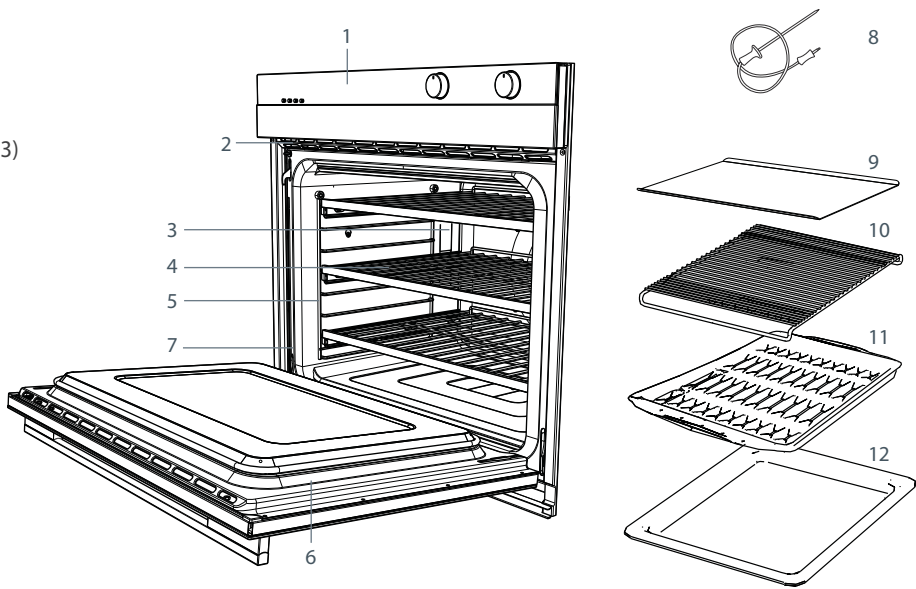
YOUR OVEN



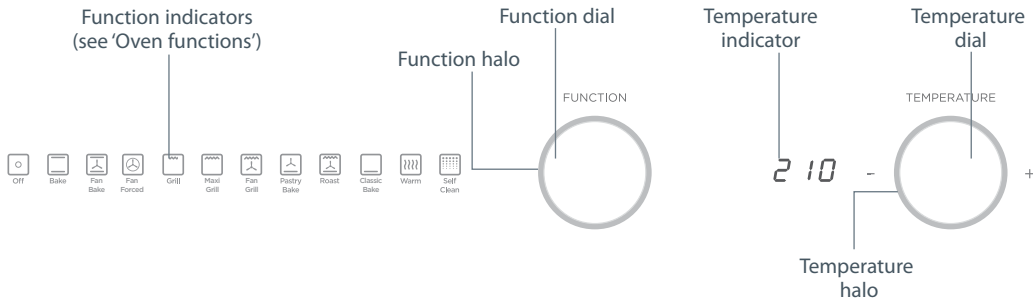
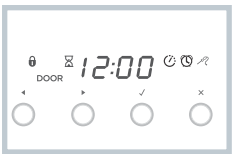
- 1 Control panel
- 2 Oven vent louvres
- 3 Oven light
- 4 Telescopic sliding shelf (x3)
- 5 Side rack
- 6 Oven door and handle
- 7 Oven seal

Accessories:

- 8 Meat probe
- 9 Flat baking tray
- 10 Rack
- 11 Grid
- 12 Pan



THE CONTROL PANEL



Control lock indicator (see ‘Locking the control panel’)

if lit:  
Control panel is locked

Locking the control panel

- To lock, press and hold the select button until the control lock indicator comes on.
- To unlock, press and hold the cancel button until the indicator flashes and then goes out.

Close door indicator

if lit:  
Door is open when oven is on (some functions only).  
See ‘Troubleshooting’ in your User guide.

Timer indicator (see ‘Using the timer’)

if lit:  
Timer is counting down

Cooking time indicator (see ‘Automatic cooking’) in User guide

if lit:  
Automatic cooking time is set

Meat probe indicator (see ‘Using the meat probe’) in User guide

if lit:  
Meat probe is in use (display will alternate between probe set temperature and internal temperature of the meat)

Stop time indicator (see ‘Automatic cooking’) in User guide

if lit:  
Automatic stop time is set

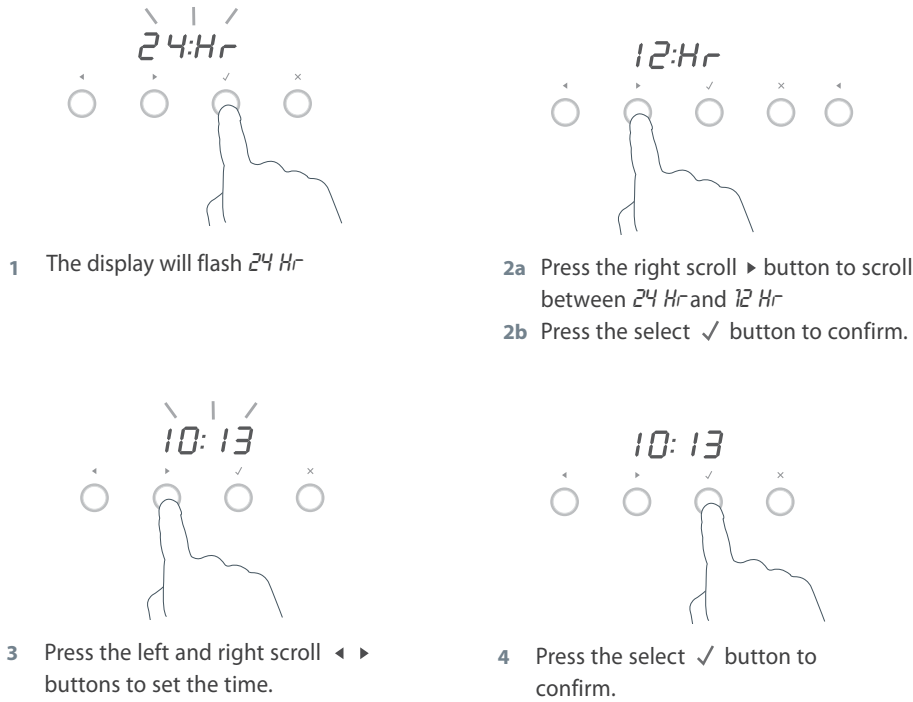
SETTING THE CLOCK

You set the clock within the user preference menu. To learn more about the user preference menu, refer to your User guide.

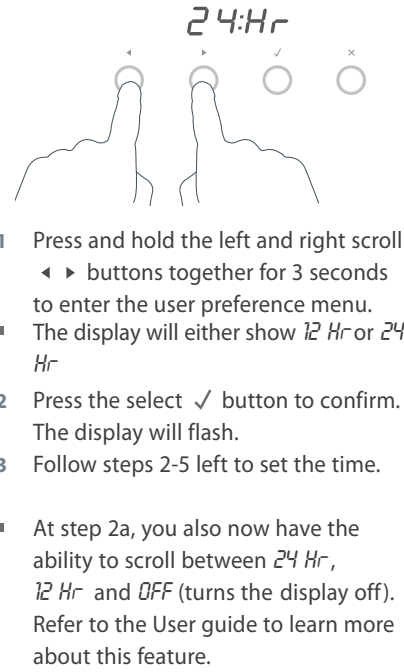
Note: If you do not wish to set the time initially when the oven is first switched on at the wall, press the cancel button to exit the clock setting.

If you want to set the clock later, follow the steps under ‘To change the time’.

When the oven is first switched on at the wall



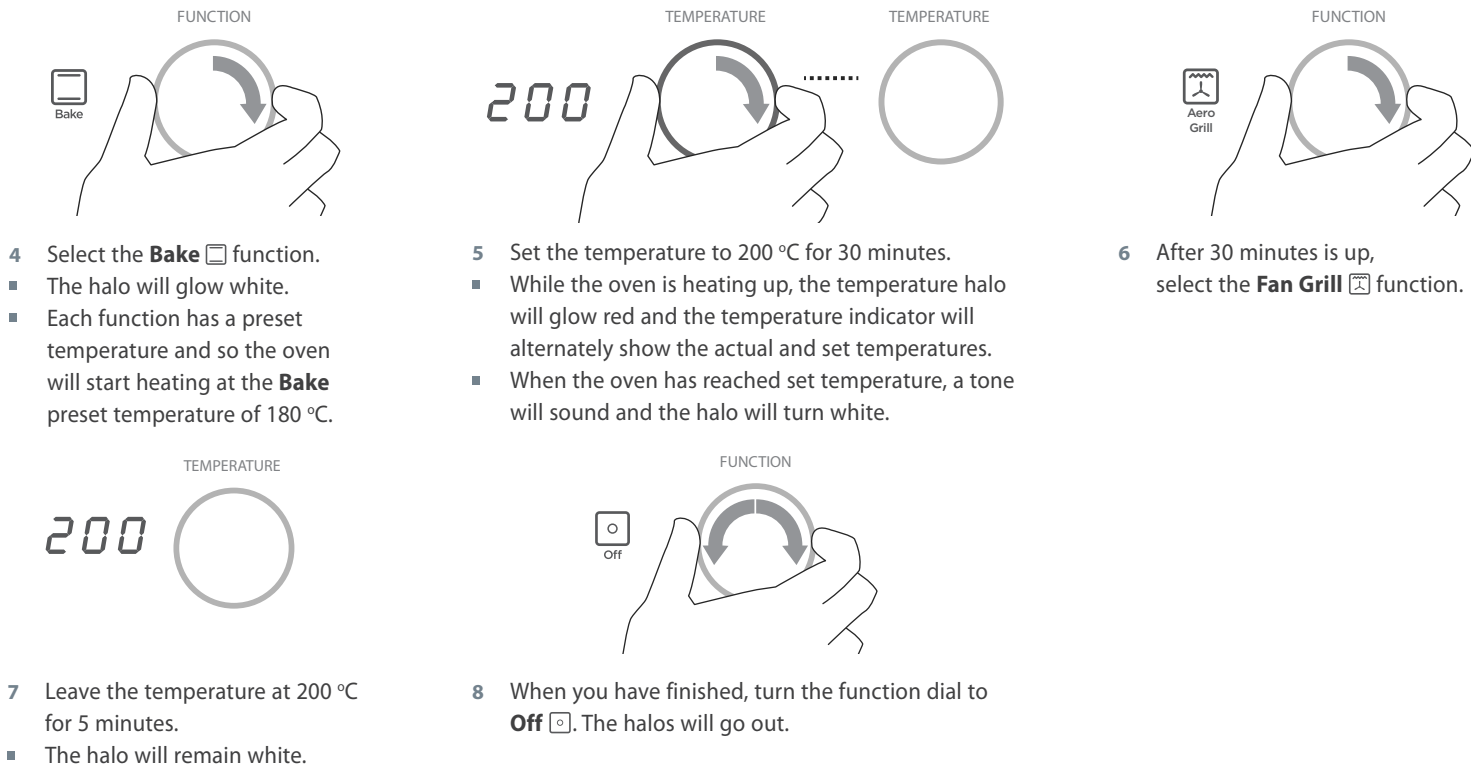
To change the time (within the user preference menu)



CONDITION THE OVEN

It is important to condition your oven before using it for cooking and baking. Conditioning will burn off any manufacturing residues and ensure that you get the best results right from the start.

- Make sure you have removed any packaging and any cable ties used to secure the shelving during transit.
- Make sure you have set the clock.
- Make sure all the shelves are fitted.



- There will be a distinctive smell and a small amount of smoke during the conditioning of the oven. This is normal, but make sure the kitchen is well ventilated during the conditioning.
- Once cooled, wipe out the oven with a damp cloth and mild detergent, and dry thoroughly.

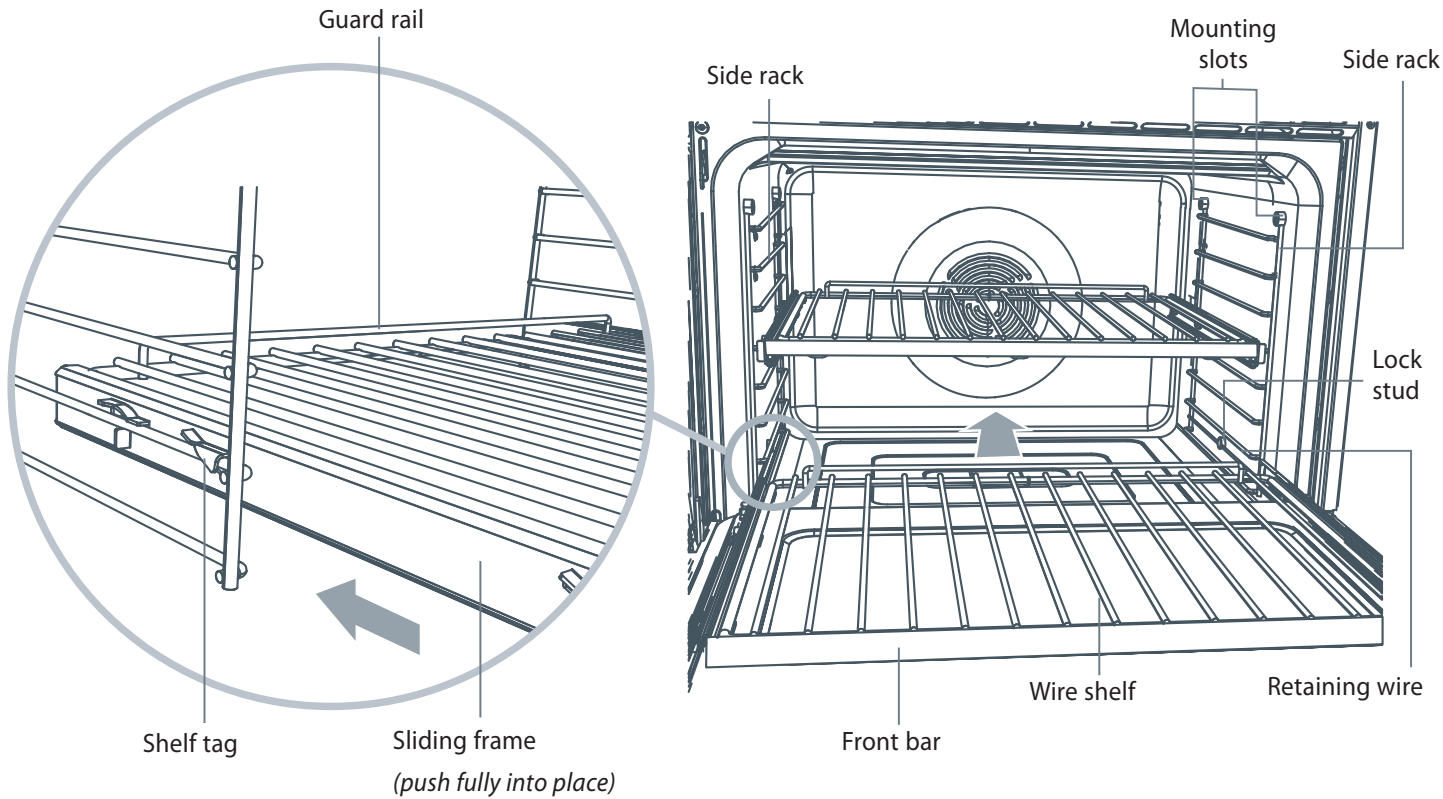
continued over ►

REPOSITIONING THE SHELVES

Placing the telescopic sliding shelves on the side racks provides EIGHT cooking positions to choose from. Refer to the User guide for suggested shelf positions.

Note: generally, the shelf positions in the top of the oven are suitable for grilling. Those in the middle or lower region of the oven are suitable for baking, roasting and casseroles.

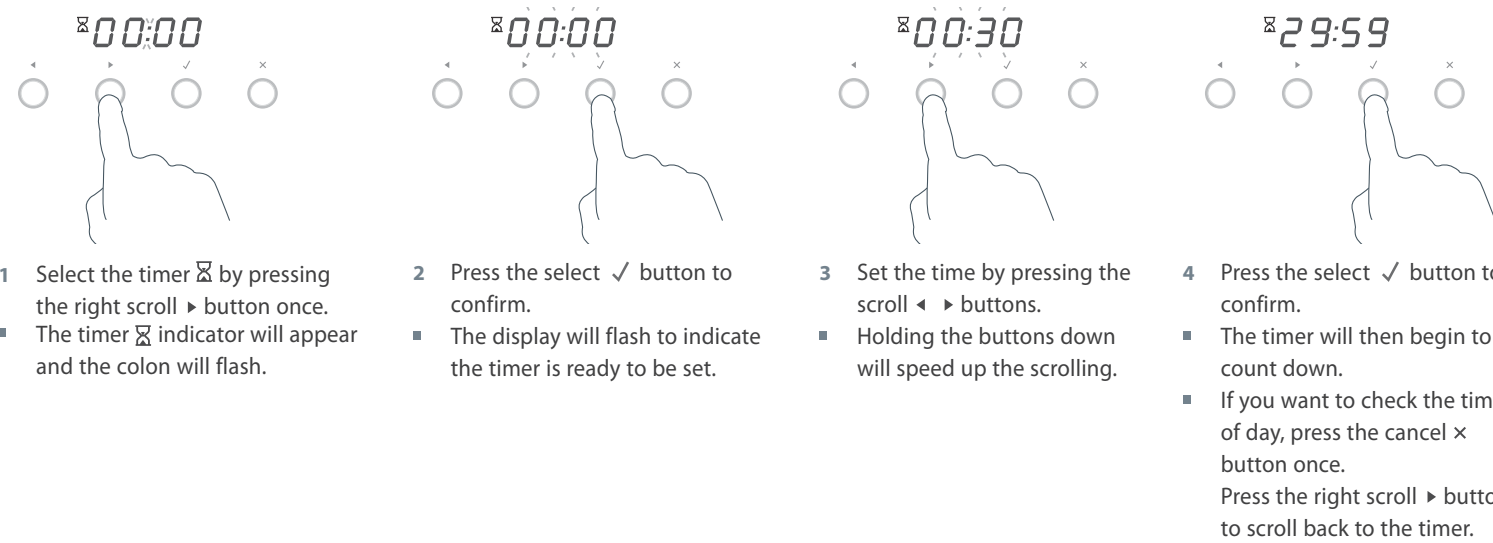
- Always position oven shelves BEFORE heating the oven.
- To remove a sliding shelf, grip it by its two front corners (making sure you are gripping the wire shelf and the sliding frame together), tilt upwards and pull it out of the oven.
- To place a sliding shelf in the oven correctly, position it so that the front bar is toward you, as shown.
- Check that the sliding frame is not extended.
- Check the guard rail (as shown) to make sure the shelf is the right way up.
- Position the shelf so that it is level and the rear shelf tags on both sides of the sliding frame rest on the side racks (as shown).
- Then push the sliding shelf all the way to the back of the oven, until the front shelf tags drop into place.
- For your safety, the wire shelves and telescopic sliding frames are built together as one unit and are not separable. This means that when placed properly on the side racks, the slides will prevent the wire shelves from tilting when pulled towards you.
- To prevent the tags from lifting off the side racks, take care to slide the shelves forward horizontally.



USING THE TIMER

- You can use the timer at any time, even if you are not using the oven.
- If the time is more than an hour, the display will count down in minutes (hr:min). If it is less than an hour, it will count down in seconds (min:sec).
- You can set the timer for up to 23 hours 59 minutes.

**Important!**  
The timer does NOT turn the oven off.



- To modify the timer setting**
- Make sure the display shows the remaining time counting down.
  - Press the select button.
  - Press the scroll buttons to set a new time.
  - Press the select button to confirm.
- To cancel the timer setting**
- Make sure the display shows the remaining time counting down.
  - Press the cancel button until the display shows the time of day and the timer icon disappears.
- When the set time is up**
- The display will show 0:00 and a tone will sound every 15 seconds.
  - Press any button to stop the tone sounding. The display will revert to showing the time of day.

FOR MORE INFO

For detailed information on the other features of your oven

For warranty information

If you...

- have any questions or comments
- need a Fisher & Paykel authorized technician to service your product
- need replacement parts or accessories
- want to register your product

➤ see your 'User guide'

➤ see your 'Service and warranty' booklet

➤ see your 'Service and warranty' booklet or contact us

NZ toll-free, 24/7 0800 372 273  
AU toll-free, 24/7 1300 650 590

www.fisherpaykel.com