

*Fisher & Paykel*

Vented dryer  
DE60F60EW1 model

**Installation instructions  
and User guide**

AU SG



Safety and warnings	2
Installation instructions	4
Before drying	6
Selecting a programme and operating your machine	7
Maintenance and cleaning	12
Troubleshooting	13
Manufacturer's Warranty	14
Customer Care	16



**Caution, risk of fire – this is a safety symbol.**

Failure to follow the warnings outlined in these user instructions can cause a fire hazard.

## ***Important!***

### ***SAVE THESE INSTRUCTIONS***

*The models shown in this User Guide may not be available in all markets and are subject to change at any time. For current details about model and specification availability in your country, please visit our local website listed on the back cover or contact your local Fisher & Paykel dealer.*

### **WARNING!**



#### **Fire Hazard**

Please read the following information. Otherwise, there may be the risk of personal injury or material damage. Moreover, any warranty and reliability commitment will become void.

### **General safety**

- Never place your machine on a carpet covered floor. The lack of airflow from below your machine may cause electrical parts to overheat.
- Your machine is designed to stop operating in the event of power resuming after a power failure. You must press **START/PAUSE/CANCEL** button to resume the programme. Press the **START/PAUSE/CANCEL** button for 3 seconds to cancel the programme (See 'Ending the programme through cancelling' page 11).
- Your machine should be operated at temperatures between +5°C and +35°C.
- This appliance is not intended for use by persons (including young children) with reduced physical, sensory or mental capabilities, or lack of experience and knowledge, unless they have been given supervision on instruction concerning the use of the appliance by a person responsible for their safety.

### **First use**

- When operating your machine for the first time, partly load it with wet items (eg old towels) and let it run approximately for 15 minutes.
- You may smell an unpleasant odour and excessive fibre/lint may accumulate during first drying cycle.
- For safety and performance purposes, clean the filter after each drying cycle.

### **Intended use**

- This product has been designed for home use.
- The appliance may only be used for drying textiles that are marked accordingly.
- Do not operate this product without the lint filter in place.
- Do not dry unwashed items in the dryer.

### **Safety instructions**

- Unplug the machine when it is not in use.
- Never wash down the appliance with water. There is the risk of electric shock!
- Never touch the plug with wet hands. Never pull from the cable to unplug the machine.
- Do not operate the machine if the power cord or plug is damaged.
- Never attempt to repair the machine yourself.
- For malfunctions that cannot be solved by information in the User Guide: Turn off and unplug the appliance and contact a Fisher & Paykel Authorised Repairer.
- Lint must not be allowed to accumulate around the tumble dryer.

## **To minimise the risk of fire in a tumble dryer, the following should be observed:**

Items that have been soiled with substances such as cooking oil, acetone, alcohol, petrol, kerosene, dry cleaning solvents, spot removers, turpentine, waxes or wax removers, should be washed in hot water with an extra amount of detergent before being dried in the tumble dryer.

Oil-affected items can ignite spontaneously, especially when exposed to heat sources such as in a tumble dryer. The items become warm, causing an oxidation reaction in the oil. Oxidation creates heat. If the heat cannot escape, the items can become hot enough to catch fire. Piling, stacking or storing oil-affected items can prevent heat from escaping and so create a fire hazard.

If it is unavoidable that fabrics that contain vegetable or cooking oil or have been contaminated by hair care products be placed in a tumble dryer they should first be washed in hot water with extra detergent - this will reduce, but not eliminate, the hazard.

The 'cool down' cycle of tumble dryers should be used to reduce the temperature of the items to ensure they will not be damaged. They should not be removed from the tumble dryer or piled or stacked while hot.

## ***Important!***

***Never stop the tumble dryer before the end of the drying cycle unless all items are quickly removed and spread out so that the heat can dissipate.***

- The dryer should not be used for items cleaned using industrial chemicals.
- Items containing foam rubber (also known as latex foam) or similarly textured rubber like materials should not be dried in a tumble dryer.  
Foam rubber materials can, when heated, produce fire by spontaneous combustion.
- Fabric softeners or similar products should not be used in a tumble dryer to eliminate the effects of static electricity unless this practice is specifically recommended by the manufacturer of the fabric softener or product.
- Undergarments that contain metal reinforcements should not be placed in a tumble dryer. Damage to the tumble dryer can result if metal reinforcements come loose during drying.
- Plastic articles such as shower caps and waterproof textiles should not be placed in a tumble dryer.
- Rubber-backed articles, fibre glass, clothes fitted with foam rubber pads, pillows, galoshes and rubber-coated tennis shoes should not be placed in a tumble dryer.

## **If there are children in your house...**

- Electrical appliances may be dangerous for children. Keep children away from the machine when it is operating. Do not let them tamper with the machine.
- Close the loading door when you leave the area where the machine is located.
- Young children should be supervised to ensure that they do not play with the appliance.

## 4 Installation instructions

### Technical specifications

Models	Specification
Height / Height for built-under installation (mm)	850 / 820
Width (mm)	595
Depth / Depth for built-under installation (mm)	540
Height adjustment of feet (mm)	5
Weight, unpacked (kg)	29
Voltage	230 - 240V, 50Hz
Connected load	2000 - 2200W
Fuse protection	16A

### The proper location

- Install your machine in environments which have no risk of freezing and in a stable and level position.
- Do not install the machine behind lockable door, a sliding door, or a door that is hinged on the opposite side to that of the dryer, in such a way that the door of the machine cannot be opened fully.
- Do not place your machine on a carpet covered floor, a long pile rug or on similar surfaces.
- Operate your machine in a well ventilated, dust-free environment.
- Make sure that your machine is not placed on the power cable.  
Place it at least 30 mm away from the edges of other furniture and walls.  
Place the machine on a sound floor.
- A special part (Part No. 791746) must be used if the machine is to be installed under a counter or in a cupboard. This replaces the top trim and must be installed by a Fisher & Paykel Authorised Repairer. Never operate the machine without the top trim.
- If the machine is to be placed on top of a washing machine, the approximate weight together may reach 180 kg when they are full.  
A stacking kit should be used between the products, fitted to the washing machine.  
Stacking Kit White Part No. 790691

### Levelling

In order to ensure that your machine operates quietly and vibration-free, it must stand level and balanced on its feet.

Balance the machine by adjusting the front feet. Loosen the feet by hand, and adjust them until the machine stands level and does not rock.

- Never unscrew the adjustable feet from their housings.

Two plastic pieces supplied together with the Installation Instructions and User Guide prevent your machine from slipping on wet and slippery surfaces. Tilt your machine to backwards to install these plastic parts. Fit the plastic parts to the front adjustable feet. Press on the plastic parts to fix them in their places. Check the balance of your machine again and readjust the adjustable feet if necessary.

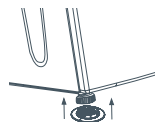


Fig.1 Fitting the non-slip foot caps

## Ventilation hose and connection

The ventilation hose assures exhausting of the air from inside the machine. The vented dryer has one air outlet. Stainless sheet metal or aluminium pipes can be used instead of the hose.

The diameter of the pipe to be used should be of 100 mm minimum.

Maximum hose and pipe lengths are given in the table below.

Each elbow and other passages should be subtracted from the above maximum length.

Connect the air outlet hose to the hose spacer piece by turning it anti-clockwise in order to connect the ventilation hose. Make the hose passages as shown below.

	Hose	Pipe
Maximum length	4 m	5 m
1 elbow 45	-1.0 m	-0.3 m
1 elbow 90	-1.8 m	-0.6 m
1 elbow 90 short	-	-2.7 m
1 wall passage	-2.0 m	-2.0 m

The exhaust of humid air from the dryer into the room is not recommended.

The air outlet hose must be extended directly to the outdoors.

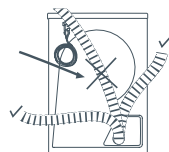
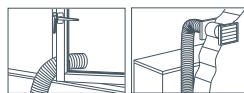
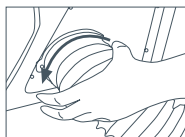
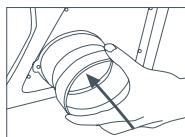


Fig.2 Fitting the vent hose

The ventilation hose can be routed outdoors via a window or it can be connected to the air outlet in the bathroom.

To prevent water accumulation in the hose, make sure that it is not folded on the floor.

The air ventilation hose should not be connected to the chimney of a stove or a fireplace.

The exhausted air must not be discharged into a flue which is used for exhausting fumes from appliances burning gas or other fuels.

Ensure that the air inlet openings are clear of obstruction.

Do not operate your machine at the same time with heaters such as a coal or gas stove.

Ensure adequate ventilation is provided to avoid the backflow of gasses into the room from appliances burning other fuels including open fires.

## Electrical connection

Connect the machine to an earthed outlet protected by a fuse of suitable capacity.

### **Important!**

- Connection should comply with national regulations.
- Power cord plug must be within easy reach after installation.
- The voltage and the allowed fuse protection are specified in the section 'Technical specifications' (page 4).
- The stated voltage must match with your mains voltage.
- Connection via extension cords or multi-plugs should not be made.
- The main fuse and switches must have a contact distance of minimum 3 mm.
- If the supply cord is damaged, it must be replaced by the manufacturer, its service agent or similarly qualified persons in order to avoid a hazard.
- The appliance must not be operated unless it is repaired! There is the risk of electric shock!

## 6 Before drying

Always follow the advice on the garment labels. With this dryer, dry only items where the label states that they are suitable for drying in a dryer by selecting the appropriate programme.



Fig.3 Garment care indicators

- Laundry items with metal attachments such as belt buckles and metal buttons can damage your machine.
- Do not dry items such as woollen, silk garments and nylon stockings, delicate embroidered fabrics, garments with metal accessories and items such as sleeping bags in the machine.
- Garments made of delicate and valuable fabrics as well as lace curtains can be creased. Do not dry these in your machine!
- Do not dry items made of hermetic fibres such as pillows and quilts in the dryer.
- Do not dry clothes containing rubber in the machine.
- Do not dry clothes which have been exposed to petroleum, oil, combustible or explosive agents in the machine even if they are washed beforehand.
- Overly wet laundry or laundry that is dripping water must not be put into the machine.

### Preparing clothes to be dried

- All laundry must be spun at the highest possible spin speed your washing machine allows for the textile type.
- Laundry may be tangled after washing. Separate items before placing them into your dryer.
- Sort your laundry according to their types and thicknesses. Dry the same types of items together.

### Correct load capacity

- The maximum capacity of the dryer is 6 kg.
- Adding laundry to the machine more than the level shown in Fig.4 is not recommended.  
The drying performance of the product will decrease when the machine is overloaded.
- Overloading may also cause damage to the product and your clothes.
- Place your items into the drum loosely so that they will not get tangled.
- Large pieces may bunch-up during drying. Stop the machine 1 – 2 times during the drying process to separate bunched-up laundry.

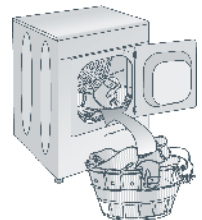


Fig.4 Loading the laundry

### Loading door

Open the loading door. Place laundry items loosely into the machine. Push the loading door to close. Ensure that no items are caught in the door.



## Control panel

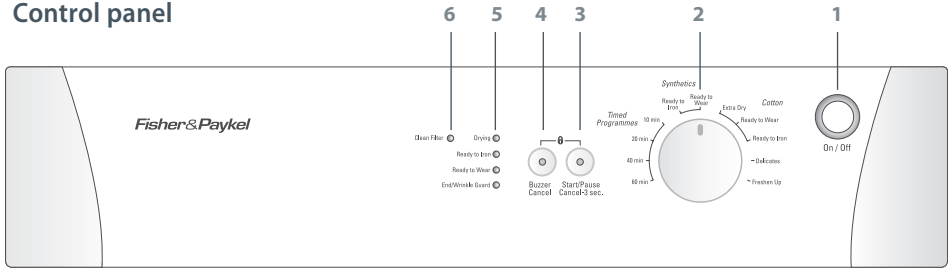


Fig.5 Control panel features

- |  |  |
|--|--|
| <ul style="list-style-type: none"> <li>1 <b>ON/OFF</b> button</li> <li>2 Programme selection knob</li> <li>3 <b>START/PAUSE/CANCEL</b> button</li> </ul> | <ul style="list-style-type: none"> <li>4 Cancel Audio Warning</li> <li>5 Programme follow-up indicator</li> <li>6 <b>CLEAN FILTER</b> warning LED</li> </ul> |
|--|--|

## Turning the machine on

Prepare the machine for programme selection by pressing the **ON/OFF** button.

Pressing the **ON/OFF** button does not necessarily mean the programme has started. Press the **START/PAUSE/CANCEL** button to allow the machine to start the programme.

## Programme selection

Choose the appropriate programme from the table below. Select the desired programme with the programme selection button.

<b>Extra dry</b>	Dry at high temperature only for cotton laundry. Thick and multi layered laundry (eg: towels, linens, jeans) are dried in a way that they do not require ironing.
<b>Ready to Wear</b>	Normal laundry (eg: tablecloths, underwear) are dried in a way that they do not require ironing before placing in drawers.
<b>Ready to Iron</b>	Normal laundry (eg: shirts, dresses) are dried ready to be ironed.

Always select the highest temperature that is safe for the type of items in the load (check care labels). A high temperature will ensure energy and time saving, but may be unsuitable for some items and cause damage.

## 8 Selecting a programme and operating your machine

### Main programmes

Depending on the type of textile, the following main programmes are available:

#### Cottons

You can dry your durable clothes with this programme as it dries at a higher temperature. It is recommended to use for your cotton items (such as bed sheets, quilt cover, underclothing, etc).

#### Synthetics

You can dry your less durable clothes with this programme, as it uses a lower temperature compared to the cottons programme. It is recommended for your synthetic clothes (such as shirts, blouses, synthetic/cotton blended garments, etc).

Do not dry curtains and lace in your machine.

#### Wrinkle Guard

A two-hour anti creasing programme to prevent laundry from creasing will be activated if you do not take the laundry out after the programme has come to an end. This programme rotates the laundry in 60-second intervals to prevent creasing.

#### Delicates

A lower temperature for your very delicate laundry (silk blouses, fine underwear, etc) that is suitable for tumble drying or laundry which is recommended to be hand-washed.

#### Freshen up

This 10 minute airing cycle blows cool air through your clothes. It is used to freshen clothes and deodorise unpleasant odours on items that have been kept in closed environments for long periods.

#### Timed programmes

Select one of the 10 min, 20 min, 40 min and 60 min timed programmes to achieve the desired final drying level at low temperatures. The machine dries for the selected time regardless of the level of moisture in your clothes. It is important to check the clothes throughout the longer timed programmes to avoid overdrying.

## Auxiliary functions

### Buzzer cancel

Your machine will send out a buzzer warning when the programme comes to an end. If you do not want to hear this warning, you need to press the **BUZZER CANCEL** button. The relevant LED will light up when this button is pressed and an audio warning will not be given when the programme comes to an end.

### Filter cleaning

A warning LED will light up to remind you to clean the filter after the programme finishes. If the filter cleaning warning LED lights up continuously, please refer to the 'Troubleshooting' section (page 13).

### Starting the programme

Press the **START/PAUSE/CANCEL** button to start the programme. The **START/PAUSE/CANCEL** button will light up to indicate that the programme has started.

### Progress of programme

Progress of a running programme is shown through the programme follow-up indicator. At the beginning of every programme step, the relevant indicator LED will light up and light of the completed step will turn off.

#### Drying

Drying level will be illuminated during the whole drying process until the drying degree reaches **READY TO IRON** .

#### Ready to Iron

Starts to illuminate when the drying degree reaches the **READY TO IRON** step and remains illuminated until the next step.

#### Ready to Wear

Starts to illuminate when the drying degree reaches the **READY TO WEAR** step and remains illuminated until the next step.

#### End / Wrinkle Guard

Illuminates when the programme comes to an end and the anti-creasing function is activated.

- If more than one LED lights up or flashes concurrently, it means there is a malfunction or a failure. Please refer to the 'Troubleshooting' section (page 13).

## Changing the programme after the programme has started

You can use this feature after your machine has started to dry your clothes under higher or lower temperatures.

For example:

- Press and hold the **START/PAUSE/CANCEL** button for about 3 seconds to cancel the programme in order to select **EXTRA DRY** programme instead of **READY TO IRON** programme.
- Select the **EXTRA DRY** programme by rotating the programme knob.
- Press **START/PAUSE/CANCEL** button to start the programme.

The programme which is selected first will continue on even if the programme selection button is moved and another programme mode is selected while the machine is operating. You must cancel the ongoing programme in order to change the drying programme. (See, 'Ending the programme through cancelling' page 11).

## Adding/removing laundry in standby mode

If you want to add or remove laundry into/from your machine after the drying programme has started, put the machine into Pause mode by pressing the **START/PAUSE/CANCEL** button. The drying process will stop. Open the door at Pause position and close it again after adding or removing laundry. Press **START/PAUSE/CANCEL** button to start the programme.

- Any laundry added after the drying process was started may cause the already dried clothes in the machine to intermingle with wet clothes and the result will be wet laundry after the drying process is over.
- It is not recommended to add laundry after the programme is started as it will increase the programme time and energy consumption.

## Childproof lock

There is a childproof lock to prevent any programme interruption due to the pressing of keys while the programme is on. The loading door and all keys except the **ON/OFF** key on the panel are deactivated when the childproof lock is active.

In order to activate the childproof lock, press on the **START/PAUSE/CANCEL** and **BUZZER CANCEL** buttons simultaneously for 3 seconds.



Fig.6 Using the childproof lock

To start a new programme after the programme is over or to interrupt the programme, the childproof lock should be deactivated.

To deactivate the childproof lock, press the same buttons for 3 seconds.

Two beeps will sound when the childproof lock is activated. A single beep will sound when the lock is deactivated.

## Ending the programme through cancelling

The programme which is selected first will keep on going even if the position of the programme selection button is changed. A new programme can be selected or the original drying programme changed after the selected programme is cancelled. In order to cancel the selected programme press the **START/PAUSE/CANCEL** button for about 3 seconds. The **CLEAN FILTER** and **END/WRINKLE GUARD** warning LEDs will light up at the end of this period for reminding purposes.

As the inside of the machine may be excessively hot when you cancel the programme while the machine is running, activate the **FRESHEN UP** programme to cool it down.

If the machine is stopped during any drying programme, and if the position of the programme selection knob is changed, an audio signal will be heard (if the **BUZZER CANCEL** function is not selected). The machine will not start even if the **START/PAUSE/CANCEL** button is pressed, unless the programme selection knob is returned to the initial programme. The paused programme must be cancelled in order to change the drying programme.

## End of programme

The **END/WRINKLE GUARD** and **CLEAN FILTER** warning LEDs on the programme follow up indicator will light up when the programme comes to an end. The door can be opened and the machine becomes ready for a second cycle. Press the **ON/OFF** button to shut down the machine.

### ***Important!***

Clean the filter after each drying process.

## 12 Maintenance and cleaning

### Lint filter

Lint is generally created during wearing and washing. Lint and fibres released from the laundry to the air during the drying cycle are collected in the lint filter.

- Always clean the filter after each drying process.

#### For filter cleaning;

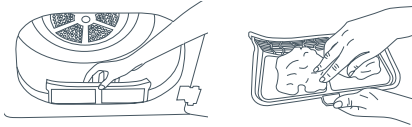


Fig.7 Cleaning the lint filter

- 1 Open the door.
- 2 Remove the lint filter by pulling it up.
- 3 Clean lint, fibres, etc. from the filter by hand or with a soft piece of cloth.
- 4 Place the lint filter back into its seat.

### ***Important!***

***Do not operate the dryer without the lint filter in place.***

### Sensor

There are humidity sensors in your machine that detect whether the laundry is dry or not.

#### For sensor cleaning;



Fig.8 Cleaning the sensors

- 1 Open the door of your machine.
  - 2 Allow the machine to cool off if drying has been carried out.
  - 3 Wipe the metal sensors with a soft cloth, dampened with vinegar and dry them.
- Clean metal sensors 4 times a year.

Problem	Cause	Explanation / Suggestion
Drying process takes too long.	The filter cover and filter drawer may need cleaning.	Check the filter cover and filter drawer are free of lint. Clean if required.
Laundry is still wet at the end of the drying cycle.	The filter cover and filter drawer may need cleaning. The machine may be overloaded.	Check the filter cover and filter drawer are free of lint. Clean if required. Check that the load does not exceed the maximum capacity for the product.
Machine does not switch on, or the programme does not start.	The product may not have been plugged in, or turned on. The loading door may be ajar.	Make sure the power cord is plugged in, and machine is turned on. Ensure that the loading door is properly closed.
	Programme may not have been set, or the <b>START/PAUSE/CANCEL</b> button may not have been pressed.	Check the programme has been selected and that it is not in <b>PAUSE</b> mode.
	Childproof lock may have been activated.	Deactivate the childproof lock.
Programme has been interrupted without any cause.	The loading door may be ajar.	Ensure the loading door is properly closed.
	The power supply may have been cut off to the machine.	Check the power cord is plugged in. Press <b>START/PAUSE/CANCEL</b> button to start the programme.
Laundry has shrunk, become felted, or deteriorated.	A programme not suitable for the type of laundry may have been used.	Dry only the laundry which is suitable for drying in your machine after checking the care label on your clothes. Select a programme with a suitable low temperature for the laundry type.
<b>END/WRINKLE GUARD</b> LED flashes.	The 2-hour wrinkle free programme to prevent laundry from creasing might have been activated.	Turn off the machine and remove the load.
<b>END/WRINKLE GUARD</b> LED is on.	Programme has come to an end.	Turn off the machine and remove the load.
The <b>DRYING</b> LED flashes.	A heat sensor failure has occurred. Machine ends the programme without heating.	Turn off the machine and remove the load. Call a Fisher & Paykel Authorised Repairer.

Call a Fisher & Paykel Authorised Repairer if the problem persists.

## 14 Manufacturer's Warranty

You automatically receive a 2 year Manufacturer's Warranty with the purchase of this Product covering parts and labour for servicing within the country of purchase.

### Fisher & Paykel undertakes to:

Repair or, at its option, replace without cost to the owner either for material or labour any part of the Product, the serial number of which appears on the Product, which is found to be defective within TWO YEARS of the date of purchase.

### Note

This Warranty is an extra benefit and does not affect your legal rights.

### This Warranty DOES NOT cover

- A Service calls which are not related to any defect in the Product. The cost of a service call will be charged if the problem is found not to be a Product fault. For example:
  1. Correcting the installation of the Product.
  2. Instructing you how to use the Product.
  3. Replacing house fuses or correcting house wiring or plumbing.
  4. Correcting fault(s) caused by the user.
  5. Noise or vibration that is considered normal, eg drain/fan sounds, refrigeration noises or user warning beeps.
  6. Correcting damage caused by pests, eg rats, cockroaches etc.
  7. Poor drying performance due to incorrect installation eg no venting system fitted, dryer vent against a wall, blocked lint filter.
  8. Poor drying performance due to incorrect loading, eg overloading or underloading.
  9. Damage from articles in the drum, eg bra wires, pens, crayons, dye transfer or flammable material.
  10. Dryer not heating due to timer dial being turned anticlockwise.
- B Defects caused by factors other than:
  1. Normal domestic use or
  2. Use in accordance with the Product's User Guide.
- C Defects to the Product caused by accident, neglect, misuse or Act of God.
- D The cost of repairs carried out by non-authorized repairers or the cost of correcting such unauthorised repairs.
- E Normal recommended maintenance as set out in the Product's User Guide.
- F Repairs when the appliance has been dismantled, repaired or serviced by other than a Fisher & Paykel Authorised Repairer or the selling dealer.
- G Pick-up and delivery.
- H Transportation or travel costs involved in the repair when the Product is installed outside the Fisher & Paykel Authorised Repairer's normal service area.



This Product has been designed for use in a normal domestic (residential) environment. This Product is not designed for commercial use (whatsoever). Any commercial use by a Customer will affect this Product's Warranty.

Service under this Manufacturer's Warranty must be provided by a Fisher & Paykel Authorised Repairer (refer to the 'Customer Care' section at the back of this book). Such service shall be provided during normal business hours. This Warranty certificate should be shown when making any claim.

### **For Australian Customers**

This Warranty is an extra benefit and does not affect your legal rights. Our goods come with guarantees that cannot be excluded under the Australian Consumer Law. You are entitled to a replacement or refund for a major failure and for compensation for any other reasonably foreseeable loss or damage. You are also entitled to have the goods repaired or replaced if the goods fail to be of acceptable quality and the failure does not amount to a major failure.

**Please keep this User Guide in a safe place.**

**Before you call for service or assistance...**

Check the things you can do yourself.  
Refer to your User Guide and check:

- 1 Your appliance is correctly installed.
- 2 You are familiar with its normal operation.
- 3 You have read the 'Troubleshooting' section.



If after checking these points you still need assistance, please refer to your nearest Fisher & Paykel Authorised Repairer, or contact us through our local website listed on the back cover.

**In Australia if you need assistance...\***

Call the Fisher & Paykel Customer Care Centre and talk to one of our Customer Care Consultants.

**Toll Free:** 1 300 650 590

**Fax:** (07) 3826 9298

**Email:** customer.care@fp.com.au

**Postal address:** PO Box 798, Cleveland, QLD 4163

**If you need service...\***

Fisher & Paykel has a network of qualified Fisher & Paykel Authorised Repairers responsible for servicing only Fisher & Paykel branded appliances. Our Customer Care Centre can recommend a qualified Fisher & Paykel Authorised Repairer in your area.

**In Singapore if you need assistance...\***

Please call our Fisher & Paykel Service line.

**Phone:** 6741 0777

**Fax:** 6547 0123

**Phone:** 6547 0100

**Postal address:** 150 Ubi Avenue 4,

**Email:** customer.service@fisherpaykel.com.sg

Sunlight Building #03-01A, Singapore 408825

\*If you call, write or contact our website please provide: your name and address, model number, serial number, date of purchase and a complete description of the problem. This information is needed in order to better respond to your request for assistance.

**Product details can be found on a sticker situated on the back of the dryer cabinet, or on the inside of the dryer door.**

**Product details**

Fisher & Paykel Appliances, Ltd.

**Model/Serial No.**

**Date of Purchase** \_\_\_\_\_ **Purchaser** \_\_\_\_\_

**Dealer** \_\_\_\_\_ **Suburb** \_\_\_\_\_

**Town** \_\_\_\_\_ **Country** \_\_\_\_\_



[www.fisherpaykel.com.au](http://www.fisherpaykel.com.au)  
[www.fisherpaykel.com.sg](http://www.fisherpaykel.com.sg)

***Fisher & Paykel***

Copyright © Fisher & Paykel 2011. All rights reserved.

The product specifications in this booklet apply to the specific products and models described at the date of issue. Under our policy of continuous product improvement, these specifications may change at any time. You should therefore check with your Dealer to ensure this booklet correctly describes the product currently available.