



User Manual

Refrigerator-Freezer

HFD462FS1

Haier

Thank You

Thank you for purchasing a Haier Product.

Please read these instructions carefully before using this appliance. The instructions contain important information which will help you get the best out of the appliance and ensure safe and proper installation, use and maintenance.

Keep this manual in a convenient place so you can always refer to it for the safe and proper use of the appliance.

If you sell the appliance, give it away, or leave it behind when you move house, make sure you also pass this manual so that the new owner can become familiar with the appliance and safety warnings.



Legend

Warning – Important Safety information



General information and tips



Environmental information



Disposal

Help protect the environment and human health. Put the packaging in applicable containers to recycle it. Help to recycle waste of electrical and electronic appliances. Do not dispose appliances marked with this symbol with the household waste. Return the product to your local recycling facility or contact your municipal office.



WARNING!

Risk of injury or suffocation!

Refrigerants and gases must be disposed of professionally. Ensure that the tubing of the refrigerant circuit is not damaged before being properly disposed of. Disconnect the appliance from the mains supply. Cut off the mains cable and dispose of it. Remove the trays and drawers as well as the door catch and seals, to prevent children and pets to get closed in the appliance.

Intended use.....	4
Safety	5
Product description.....	8
Use.....	9
Equipment	17
Care and cleaning.....	19
Troubleshooting	21
Installation.....	24
Technical data	26

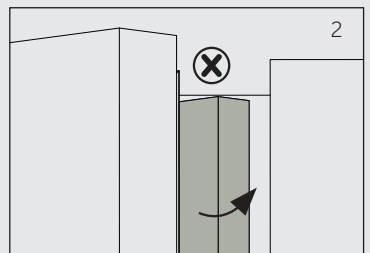
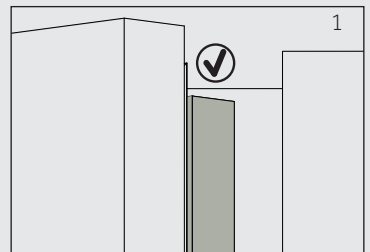


CAUTION!

When you close the door, the vertical door slip on the left door should be bent inside (1).

If you try to close the left door and the vertical door slip is unbent (2), you should bend it firstly, otherwise the door slip will hit the fixing shaft or right door. Thus a damage to the door slip or a leak will occur.

There is a heating thread inside the vertical door slip. The temperature of the surface will rise a little, which is normal and won't affect the function of refrigerator.



Intended use

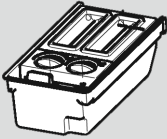
Intended use

This appliance is intended for cooling and freezing food. It has been designed exclusively for use in dry-interior house-holds. It is not intended for commercial or industrial use.

Changes or modifications to the device are not allowed. Unintended use may cause hazards and loss of warranty claims.

Accessories

Check the accessories and literature in accordance with this list:



Manual ice maker



Warranty card



User manual

Before switching on the appliance for the first time

Do...

- ▶ make sure there is no transport damage.
- ▶ make sure all packaging is removed and is kept out of children's reach.
- ▶ wait at least two hours before installing the appliance in order to ensure the refrigerant circuit is fully efficient.
- ▶ handle the appliance always with at least two persons because it is heavy.
- ▶ install the appliance in a well-ventilated place. Ensure a space of at least 5 cm on all sides around the appliance. Install and level the appliance in an area suitable for its size and use.
- ▶ keep ventilation openings in the appliance or in the in-built structure clear of obstruction.
- ▶ make sure that the electrical information on the rating plate agrees with the power supply. If it does not, contact an electrician.
- ▶ consider that the appliance is operated by a 220~240 VAC/50 Hz power supply. Abnormal voltage fluctuation may cause the appliance to fail to start or not to operate correctly and damage the temperature control or compressor, originating abnormal noise too. To eliminate abnormal fluctuation it is suggested to use an automatic regulator.
- ▶ use a separate earthed socket for the power supply which is easy accessible. The appliance must be earthed.
- ▶ make sure the plug is easy accessible.
- ▶ ensure that the power cable is not trapped by the refrigerator. Do not step on the power cable.



WARNING!

Make sure not to damage the electric cable and the plug. If damaged it must only be replaced by either the manufacturer or the authorised service agent.

Do not...

- x install the appliance in direct sunlight or in the near of heat sources (e.g. stoves, heaters).
- x damage the refrigerant circuit. If it does become damaged, do not use the appliance.
- x use multi-plug adapters and extension cables.

Safety

During daily use

Do...

- ▶ make sure that this appliance is only used by children from the age of 8 as well as from persons with reduced physical, sensory or mental capabilities, or lack of experience and knowledge, if they are supervised or have been instructed how to use it in a safe way and understand the hazards involved.
- ▶ keep away children under 3 years of age from the appliance unless they are constantly supervised.
- ▶ make sure children are not playing with the appliance.
- ▶ make sure children are supervised if they carry out cleaning and maintenance.
- ▶ hold the plug, not the cable, when unplugging the appliance.
- ▶ replace a damaged supply cord only by the manufacturer, its service agent or similarly qualified persons in order to avoid a hazard.
- ▶ follow these instructions if coal gas or other inflammable gas is leaking in the vicinity of the appliance: turn off the valve of the leaking gas, open the doors and windows and do not unplug or plug in the power cable of the appliance or any other appliance.
- ▶ open and close the doors only with the handles. The gap between the doors and between the doors and the cabinet is very narrow. Do not extend your hands in these areas to avoid pinching your fingers. Open or close the refrigerator doors only when there are no children standing within the range of door movement.
- ▶ disconnect the appliance from the electrical supply before undertaking any routine maintenance. Allow at least 5 minutes before restarting the appliance, as frequent starting may damage the compressor.
- ▶ eliminate the dust on the back of the unit at least once in the year to avoid hazard by fire, as well as increased energy consumption.
- ▶ notice that the product is set for operation at a specific ambient range between 10 and 43°C. The appliance may not work properly if it is left for a long period at a temperature above or below the indicated range.
- ▶ check the condition of food if a warming in the freezer has taken place.

Do not...

- x set unnecessarily low temperature in the refrigerator compartment. Minus temperatures may occur at high settings. Attention: Bottles can burst.
- x store medicines which need a precision storage temperature or bacteria or chemical agents in the appliance.
- x store liquids in bottles or cans (besides high percentage spirits) especially carbonated beverages in the freezer, as these will burst during freezing.
- x place unstable articles (heavy objects, containers filled with water) on the top of the appliance, to avoid personal injury caused by falling or electric shock caused by contact with water.
- x pull on the door shelves. The door may be pulled slant, the bottle rack, may be pulled away, or the appliance may topple.
- x damage the refrigerant circuit. If it does become damaged, do not use the appliance.

- x step on the freezer storage compartment door or drawer.
- x touch the inside surface of the freezer storage compartment when in operation, especially with wet hands, as your hands may freeze onto the surface.
- x touch frozen goods with wet hands (wear gloves). Especially do not eat ice lollies immediately after removal from the freezer compartment. There is the risk to freeze or the formation of frost blisters. FIRST aid: keep immediately under running cold water. Do not pull away!
- x scrape off frost and ice with sharp objects. Do not use sprays, electric heaters like heater, hair dryer, steam cleaners or other sources of heat in order to avoid damage to the plastic parts.
- x clean the appliance with hard brushes, wire brushes, detergent powder, petrol, amyl acetate, acetone and similar organic solutions, acid or alkaline solutions. Please clean with special refrigerator detergent to avoid damage.
- x spray or flush the appliance during cleaning.
- x use water spray or steam to clean the appliance.
- x clean the cold glass shelves with hot water. Sudden temperature change may cause the glass to break.
- x use electrical devices inside the food storage compartments of the appliance, unless they are of the type recommended by the manufacturer.
- x try to repair the appliance by yourself. In case of repair please contact our customer service.



WARNING!

Do not store or use inflammables, explosives or corrosive materials in the appliance or in the vicinity.

Refrigerant gas information



WARNING!

The appliance contains the flammable refrigerant ISOBUTHANE (R600a). Make sure the refrigerant circuit is not damaged during transportation or installation. Leaking refrigerant may cause eye injuries or ignite. If damage has occurred, keep away open fire sources, thoroughly ventilate the room, do **not** plug or unplug the power cords of the appliance or any other appliance. Inform the customer service.

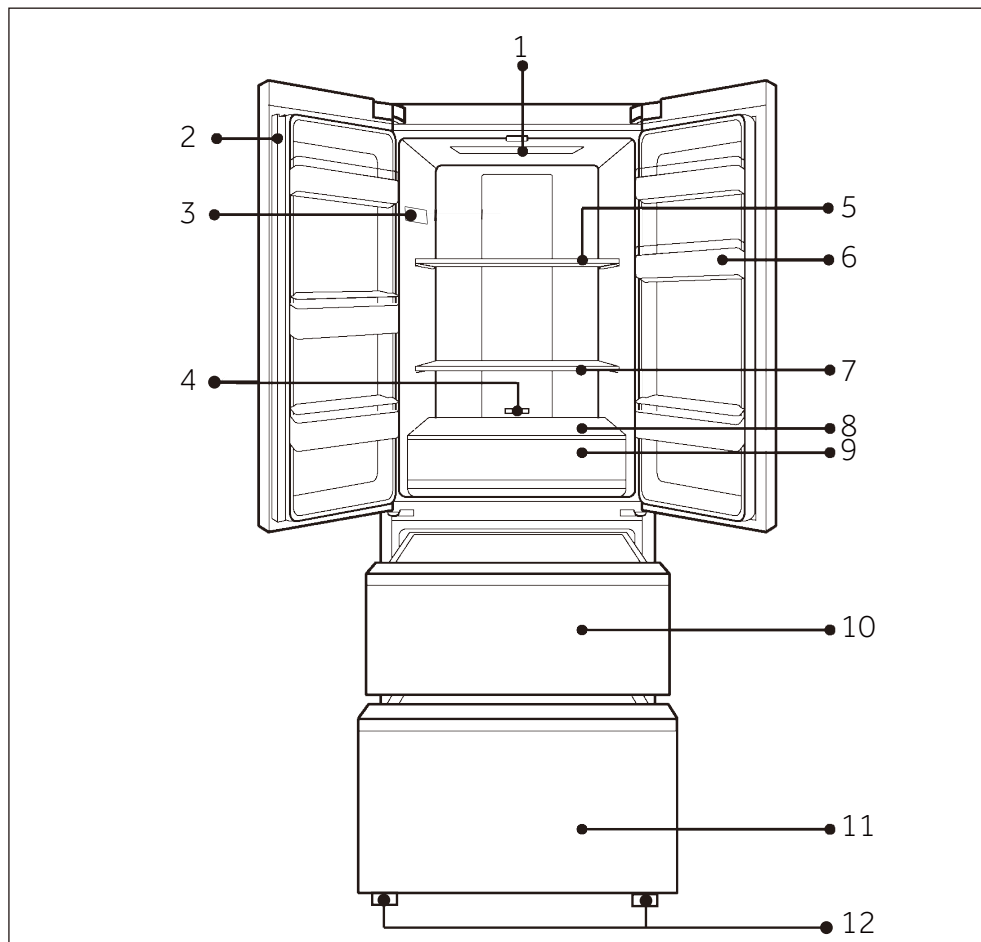
If eyes get into contact with the refrigerant, rinse immediately under running water and seek medical attention.

This refrigerator may contain the flammable refrigerant isobutane - R600a. It is hazardous for anyone other than an Authorised Service Person to service this appliance.

In Queensland - the authorized Service Person **MUST** hold a Gas Work Authorisation for hydrocarbon refrigerants, to carry out Servicing or repairs which involve the removal of covers.

Product description

Due to technical changes and different models, the illustrations in this chapter may differ from your model.



- | | |
|---|---------------------------------|
| 1 Refrigerator LED lamp | 8 Glass cover My Zone drawer |
| 2 Door beam | 9 My Zone drawer |
| 3 Rating plate | 10 Upper freezer storage drawer |
| 4 Temperature regulator for MyZone drawer | 11 Lower freezer storage drawer |
| 5 Glass shelf | 12 Adjustable feet |
| 6 Bottle holder | |
| 7 Glass shelf | |

Before first use

- ▶ Remove all packaging materials, keep them out of children`s reach and dispose them in an environmentally friendly manner.
- ▶ Clean the inside and outside of the appliance with water and a mild detergent before putting any food in it.
- ▶ After the appliance has been levelled and cleaned, wait for at least 2 hours before connecting it to the power supply. See Section INSTALLATION.
- ▶ Precool the compartments at high settings before loading with food. The function Power Cool and Power Freeze help to cool down the compartments quickly.
- ▶ The refrigerator temperature and freezer temperature are automatically set to 5° C and -18° C respectively. These are the recommended settings. If desired, you can change these temperatures manually. Please see FUNCTIONS.

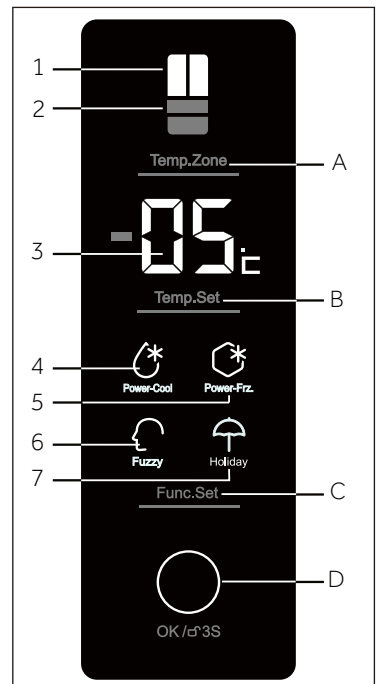
Control panel

Buttons:

- A Compartment selector ("Temp.Zone")
- B Temperature regulation key ("Temp.Set")
- C Function selector ("Func.Set")
- D Setting/Panel lock selector

Indicators:

- 1 Refrigerator compartment
- 2 Freezer Compartment
- 3 Temperature value
- 4 Function "Power-Cool"
- 5 Function "Power-Freeze"
- 6 Fuzzy-Function
- 7 Holiday-Function



Sensor keys

The buttons on the control panel are sensor keys, which already respond when lightly touched with the finger.

Switch on /of the appliance

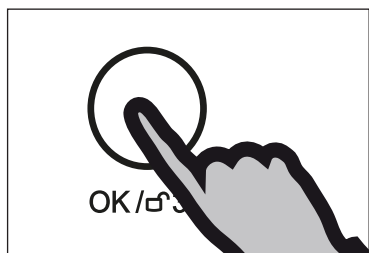
The appliance is in operation as soon as it is connected to the power supply.

When the appliance is powered on for the first time, the indicator for the refrigerator compartment is shining and the temperature is displayed. The panel lock is active.

Empty the appliance before switching off. To switch off the appliance, pull the power cord out off the power socket.

Notice

- ▶ The appliance is preset to the recommended temperature of 5°C (refrigerator) and -18°C (freezer). Under normal ambient condition you need not to set a temperature.
- ▶ When the appliance is switched on after disconnection from the main power supply, it may take up to 12 hours for the correct temperatures to be reached.



Lock/unlock panel

- ▶ Touch button D ("OK/⌂ 3S") for 3 seconds to block all panel elements against activation. An acoustic signal sounds and the lightening of the panel is switched off.
- ▶ For unlocking press again the button.

Notice

The control panel is automatically blocked against activation if 30 seconds no button is pressed. For any settings the control panel must be unlocked.

Standby-mode

The display screen turns off automatically 30 seconds after pressing a key or if the refrigerator door is open longer than 30 seconds. The display will be automatically locked. It lights up automatically when pressing any key or opening the door/freezer drawer

Door opening alarm

When the refrigerator door is opened for more than 3 minutes, the door opening alarm will sound. The alarm can be silenced by closing the door. If the door is left open for more than 7 minutes, the light inside the refrigerator will automatically switch off.

Select the working mode

You may need to select one of the following two modes to set the appliance:

1) Fuzzy mode

Under fuzzy mode, the appliance can automatically adjust the temperature setting according to the ambient temperature and temperature change in the appliance. If you do not have any special requirements, we recommend that you use fuzzy mode (refer to FUZZY FUNCTION).

2) Manual adjusting mode:

If you want to manually adjust the temperature of the appliance in order to store a particular food, you can set the temperature via a temperature adjusting button (refer to ADJUST THE TEMPERATURE).

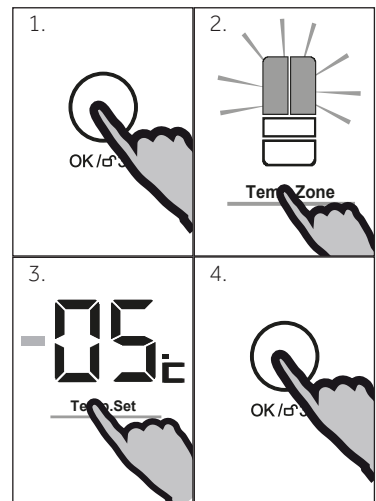
Adjust the temperature

The indoor temperatures are influenced by the following factors:

- ▶ Ambient temperature
- ▶ Frequency of door opening
- ▶ Amount of stored foods
- ▶ Installation of the appliance

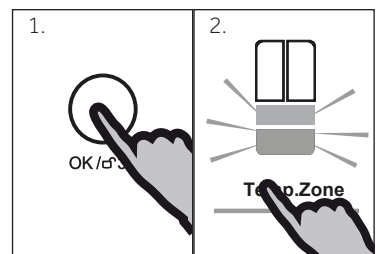
Adjust the temperature for fridge

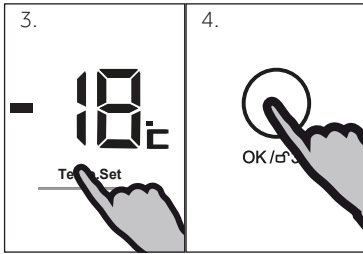
1. Unlock the panel by pressing button D ("OK/ ⌂ 3S") if it is locked.
2. Press button A ("Temp.Zone") until the indicator for the refrigerator compartment lights up. The actual temperature in the refrigerator compartment is displayed.
3. Press button B to set the refrigerator temperature. The setting value of original refrigerating compartment flashes in the display. A signal will sound at each key press. The temperature increases in sequences of 1°C from a minimum of 1°C to a maximum of 7°C. The optimum temperature in the refrigerator is 5°C. Colder temperatures mean unnecessary energy consumption.
4. Press button D ("OK/ ⌂ 3S") to confirm. Otherwise the temperature flashes for 5 seconds and the previously set temperature remains active.



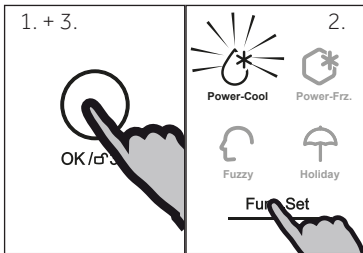
Adjust the temperature for freezer

1. Unlock the panel by pressing button D ("OK/ ⌂ 3S") if it is locked.
2. Press button A ("Temp.Zone") until the indicator for the freezer compartment lights up. The actual temperature in the freezer compartment is displayed.





3. Press button B to set the freezer temperature. The setting value of original freezer compartment flashes in the display. A signal will sound at each key press. The temperature increases in sequences of 1°C from -15°C to -23°C. The optimum temperature in the freezer is -18°C. Colder temperatures mean unnecessary energy consumption.
4. Press button D ("OK/ ⏏ 3S") to confirm. Otherwise the temperature flashes for 5 seconds and the previously set temperature remains active.



Power-Cool function

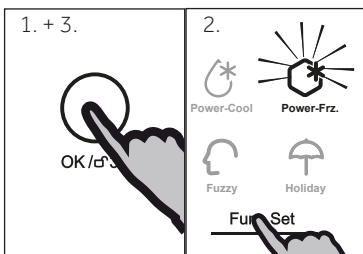
Switch on the Power-Cool function if larger quantity of food should be stored (for example after the purchase). The Power-Cool function accelerates the cooling of fresh food and protects the goods already stored from undesirable warming. The factory setting temperature is + 2 °C.

1. Unlock the panel by pressing button D ("OK/ ⏏ 3S") if it is locked.
2. Repeatedly press button C ("Func.Set") until indicator "Power-Cool" starts to blink.
3. Press button D ("OK/ ⏏ 3S") to confirm. By repeating the above steps or selecting another function this function can be switched off again.



Notice

This function will be automatically disabled when the temperature from + 2 °C is reached or the function has lasted for more than 3 hours.



Power-freeze function

Fresh food should be frozen as quickly as possible to the core. This preserves the best nutritional value, appearance and taste. The Power-freeze function accelerates the freezing of fresh food and protects the goods already stored from undesirable warming. If you need to freeze a large amount of food once, it is recommended to set the Power-freeze function 24hrs prior before the usage of frozen room.

1. Unlock the panel by pressing button D ("OK/ ⏏ 3S") if it is locked.
2. Repeatedly press button C ("Func.Set") until indicator "Power-Frz." starts to blink.

- Press button D ("OK/ ⌂ 3S") to confirm. By repeating the above steps or selecting another function this function can be switched off again.



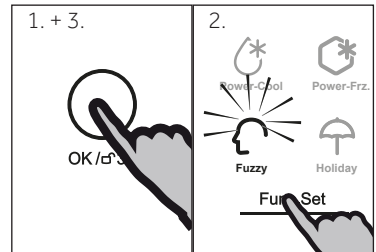
Notice

The Power-freeze function will automatically switch off after 50 hours. The appliance is then operated at the previously set temperature.

Fuzzy function

In the Fuzzy function, the appliance can automatically adjust the temperature setting according to the ambient temperature and temperature change in the appliance.

- Unlock the panel by pressing button D ("OK/ ⌂ 3S") if it is locked.
- Repeatedly press button C ("Func.Set") until indicator "Fuzzy" starts to blink.
- Press button D ("OK/ ⌂ 3S") to confirm. By repeating the above steps or selecting an other function this function can be switched off again.

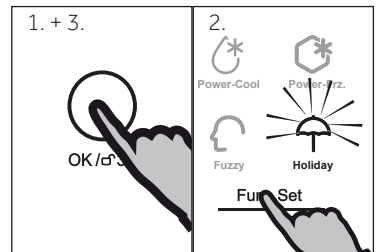


Holiday function

This function sets the refrigerator temperature permanently to 17°C.

This allows to keep the door of the empty refrigerator closed without causing an odour or mold - during a long absence (e.g. during holiday). The freezer compartment is free for your setting.

- Unlock the panel by pressing button D ("OK/ ⌂ 3S") if it is locked.
- Repeatedly press button C ("Func.Set") until indicator "Holiday" starts to blink.
- Press button D ("OK/ ⌂ 3S") to confirm. By repeating the above steps or selecting an other function this function can be switched off again.



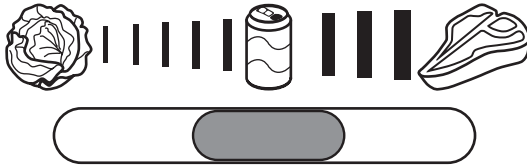
WARNING!




During the holiday function no goods must be stored in the refrigerator compartment. The temperature of + 17 °C is too high for storing food.

MY ZONE DRAWER

The refrigerator compartment is equipped with a My Zone drawer which allows you to store food at the proper temperature, to ensure its optimal nutritional value.

1. Slide the control to the desired setting.



Setting	Description
	Fruits and Vegetables Suitable to store fruits and vegetables
	Soft Drinks Rapid cooling and storage of beverages
	Meats Suitable to store meat.



Energy saving tips

- ▶ Make sure the appliance is properly ventilated (see INSTALLATION).
- ▶ Do not install the appliance in direct sunlight or in the near of heat sources (e.g. stoves, heaters).
- ▶ Avoid unnecessarily low temperature in the appliance. The energy consumption increases the lower the temperature in the appliance is set.
- ▶ Functions like "Power-Cool" or "Power-Frz." consume more energy.
- ▶ Allow warm food to cool down before placing it in the appliance.
- ▶ Open the appliance door as little and as briefly as possible.
- ▶ Do not overfill the appliance to avoid obstructing the air flow.
- ▶ Avoid air within the food packaging.
- ▶ Keep door seals clean so that the door always closes correctly.
- ▶ Defreeze frozen food in the fridge storage compartment.

Tips on storing fresh food

Storing into the refrigerator compartment

- ▶ Keep your fridge temperature below 5°C.
- ▶ Hot food must be cooled to room temperature before storing in the appliance.
- ▶ Foods stored in the refrigerator should be washed and dried before storing
- ▶ Food to be stored should be properly sealed to avoid odour or taste alterations.
- ▶ Do not store excessive quantities of food. Leave spaces between foods to allow cold air flow around them, for a better and more homogeneous cooling.
- ▶ Foods eaten daily should be stored at the front of the shelf.
- ▶ Leave a gap between food and the inner walls, allowing air flow. don't store food against the rear wall: food could freeze against rear wall. Avoid direct contact of food (especially oily or acidic food) with the inner liner, as oil/acid can erode the inner liner. Clean away oily/acid dirt whenever it is found.
- ▶ Defreeze frozen food in the fridge storage compartment. This way, you can use the frozen food to decrease the temperature in the compartment and save energy.
- ▶ The ageing process of fruit and vegetables such as courgettes, melons, papaya, banana, pineapple, etc. can be accelerated in the refrigerator. Therefore, it is not advisable to store them in the refrigerator. However, the ripening of strongly green fruits can be promoted for a certain period. Onions, garlic, ginger and other root vegetables should also be stored at room temperature.
- ▶ Unpleasant odours inside the fridge are a sign that something has spilled and cleaning is required. See CARE AND CLEANING.
- ▶ Different foods should be placed in different areas according to their properties:

Food	Location
Butter, cheese	Upper door rack
Eggs	Door rack
Fruit, vegetables, salad	My Zone drawer (with function "Fruits &Vegetable")
Meat, sausage, cheese, milk	Lower area (lowest shelf / coverage above the My Zone drawer)
Dairy products, canned food, cans	Upper area or door rack
Drinks, bottles, tubes	Door rack
Fresh meat, fresh fish, sausages, cooked foods	My Zone drawer

Storage into the freezer compartment

- ▶ Keep the freezer temperature at - 18°C.
- ▶ 24 hours before freezing switch on the Power- freeze function; for small quantities of food 4-6 hours are sufficient.
- ▶ Hot food must be cooled to room temperature before storing in the freezer compartment.
- ▶ Food cut into small portions will freeze faster and be easier to defrost and cook. The recommended weight for each portion is less than 2.5 kg
- ▶ It is better to pack food before putting it into the freezer. The outside of the packaging must be dry to avoid bags sticking together. Packaging materials should be odour-free, airtight, non-poisonous and nontoxic.
- ▶ In order to avoid expiration of storage periods, please note the freezing date, time limit and name of the food on the packaging according to the storage periods of different foods.
- ▶ **WARNING!** Acid, alkali and salt etc. could erode the internal surface of the freezer. Do not place the food having these substances (e.g. sea fish) directly on the internal surface. Salt water in the freezer should be cleaned up immediately.
- ▶ Do not exceed the food storage times recommended by the manufacturers. Only take the required amount of food out of the freezer.
- ▶ Consume defrosted food quickly. Defrosted food cannot be re-frozen unless it is first cooked, otherwise it may be less edible.
- ▶ Do not load excessive quantities of fresh food in the freezer compartment. Refer to the freezing capacity of the freezer – See TECHNICAL DATA or data at the type plate.
- ▶ Food can be stored in the freezer at a temperature of at least -18°C for 2 to 12 months, depending on its properties (e.g., meat: 3-12 months, vegetables: 6-12 months)
- ▶ When freezing fresh food, avoid bringing it in contact with already frozen food. Risk of thawing!
- ▶ Defreeze frozen food in the fridge. This way, you can use the frozen food to decrease the temperature in the compartment and save energy.

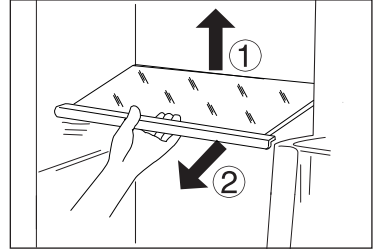
When storing commercially frozen foods, please follow these guidelines:

- ▶ Always follow manufacturers' guidelines for the length of time you should store food for. Do not exceed these guidelines!
- ▶ Try to keep the length of time between purchase and storage as short as possible to preserve food quality.
- ▶ Buy frozen foods, which have been stored at a temperature of -18 °C or below.
- ▶ Avoid buying food which has ice or frost on the packaging – This indicates that the products might have been partially defrosted and refrozen at some point – temperature rises affect the quality of food.

Adjustable shelves

The height of the shelves can be adjusted to fit your storage needs.

1. To relocate a shelf, remove it first by uplifting its hind edge (1) and pulling it out (2).
2. To reinstall it, put it on the lugs on both sides and push it to the most rearward position until the rear of the shelf is fixed inside the slots in the sides



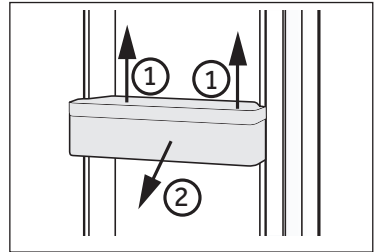
Notice:

Ensure that all ends of a shelf are level.

Removable door racks

The door racks can be removed for cleaning:

1. Place hands on each side of the rack and lift it upwards (1).
2. Pull the door rack out (2).
3. In order to insert the door rack, the above steps are carried out in reverse order.

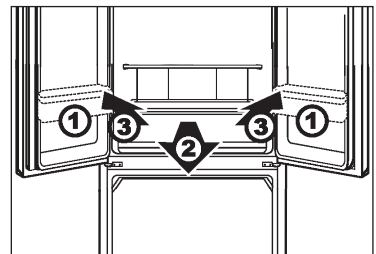


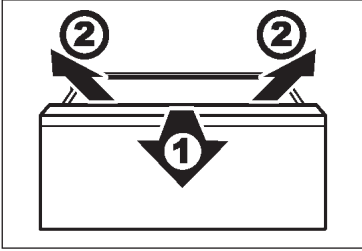
Removable My Zone drawer

For the use of the My Zone drawer, please check section USE (My- Zone drawer)

To remove the My Zone drawer:

1. Remove the two lower bottle holder from both doors.
2. Pull the My Zone drawer and the glass cover to the maximum extent.
3. Lift and remove the drawer and its cover.
4. In order to insert the My Zone drawer, the above steps are carried out in reverse order.





Removable freezer storage drawer

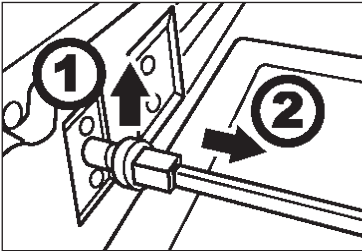
To remove the freezer storage drawer open them to the maximum extent, lift and remove them.

In order to insert the freezer storage drawer, the above steps are carried out in reverse order.



WARNING!

Do not overload the drawers: Max. load of each drawer: 35 kg!

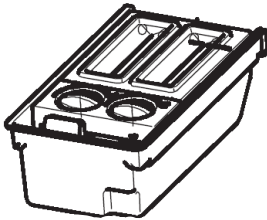


Removable connection rod

The rod can be removed after removing the top freezer drawer:

1. Pull out the clip of supporting bar upward of the upper freezing slide to the left and right of connecting rod.
2. Remove the connecting rod.

In order to insert the connection rod, the above steps are carried out in reverse order.



Ice-making

Insert water at the scale line of the measuring cup into each ice tray and put the tray into the freezing chamber to freeze. After freezing, turn the knob in turn with hands and the ice cubes will drop into the ice receiver automatically. Ice cubes can be taken out directly from the ice receiver.



WARNING!

Disconnect the appliance from the power supply before cleaning.

Cleaning

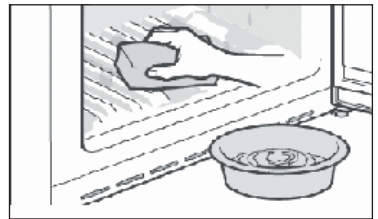
Clean the appliance when only little or no food is stored.

The appliance should be cleaned every four weeks for good maintenance and to prevent bad stored food odors.



WARNING!

- ▶ Do not clean the appliance with hard brushes, wire brushes, detergent powder, petrol, amyl acetate, acetone and similar organic solutions, acid or alkaline solutions. Please clean with special refrigerator detergent to avoid damage.
 - ▶ Do not spray or flush the appliance during cleaning.
 - ▶ Do not use water spray or steam to clean the appliance.
 - ▶ Do not clean the cold glass shelves with hot water. Sudden temperature change may cause the glass to break.
 - ▶ Do not touch the inside surface of the freezer storage compartment, especially with wet hands, as your hands may freeze onto the surface.
 - ▶ In case of heating check the condition of frozen goods.
-
- ▶ Always keep the door gasket clean.
 - ▶ Clean the inside and housing of the appliance with a sponge dampened in warm water and neutral detergent.
 - ▶ Rinse and dry with soft cloth.
 - ▶ Do not clean any of the parts of the appliance in a dishwasher.
 - ▶ Allow at least 5 minutes before restarting the appliance as frequent starting may damage the compressor.



Defrosting

The defrosting of the refrigerator and the freezer compartment are done automatically; no manual operation is needed.

Replacing the LED-lamps



WARNING!

Do not replace the LED lamp yourself, it must only be replaced by either the manufacturer or the authorised service agent.

The lamp adopts LED as its light source, featuring low energy consumption and long service life. If there is any abnormality, please contact customer service. See CUSTOMER SERVICE.

Parameters of the lamp: : 12 V max 2 W.

Care and cleaning

Non-use for a longer period

If the appliance is not used for an extended period of time, and you will not use the Holiday-function for the refrigerator:

- ▶ Take out the food.
- ▶ Unplug the power cord.
- ▶ Clean the appliance as described above.
- ▶ Keep the door and freezer drawers open to prevent the creation of bad odours inside.



Notice

Turn the appliance off only if strictly necessary.

Moving the appliance

1. Remove all food and unplug the appliance.
2. Secure shelves and other moveable parts in the fridge and the freezer with adhesive tape.
3. Do not tilt the refrigerator more than 45° to avoid damaging the refrigerating system.



WARNING!

- ▶ Do not lift the appliance by its handles.
- ▶ Never place the appliance horizontally on the ground.

Many occurring problems could be solved by yourself without specific expertise. In case of a problem please check all shown possibilities and follow below instructions before you contact an after sales service. See CUSTOMER SERVICE.



WARNING!

- ▶ Before maintenance, deactivate the appliance and disconnect the mains plug from the mains socket.
- ▶ Electrical equipment should be serviced only by qualified electrical experts, because improper repairs can cause considerable consequential damages.
- ▶ A damaged supply should only be replaced by the manufacturer, its service agent or similarly qualified persons in order to avoid a hazard.

Problem	Possible Cause	Possible Solution
The compressor does not work.	<ul style="list-style-type: none"> • Mains plug is not connected in the mains socket. • The appliance is in the defrosting cycle 	<ul style="list-style-type: none"> • Connect the mains plug. • This is normal for an automatic defrosting
The appliance runs frequently or runs for a long period of time.	<ul style="list-style-type: none"> • The indoor or outdoor temperature is too high. • The appliance has been off power for a period of time. • A door/drawer of the appliance is not tightly closed. • The door/drawer has been opened too frequently or for too long. • The temperature setting for the freezer compartment is too low. • The door/drawer gasket is dirty, worn, cracked or mismatched. • The required air circulation is not guaranteed. 	<ul style="list-style-type: none"> • In this case, it is normal for the appliance to run longer. • Normally, it takes 8 to 12 hours for the appliance to cool down completely. • Close the door/drawer and ensure the appliance is located on a level ground and there is no food or container jarring the door. • Do not open the door/drawer too frequently. • Set the temperature higher until a satisfactory refrigerator temperature is obtained. It takes 24 hours for the refrigerator temperature to become stable. • Clean the door/drawer gasket or replace them by the customer service. • Ensure adequate ventilation.
The inside of the refrigerator is dirty and/or smells.	<ul style="list-style-type: none"> • The inside of the refrigerator needs cleaning. • Food of strong odour is stored in the refrigerator. 	<ul style="list-style-type: none"> • Clean the inside of the refrigerator. • Wrap the food thoroughly.

Troubleshooting

Problem	Possible Cause	Possible Solution
It is not cold enough inside the appliance.	<ul style="list-style-type: none"> The temperature is set too high. warm goods has been stored. Too much food has been stored at one time. The goods are too close to each other. A door/drawer of the appliance is not tightly closed. The door/drawer has been opened too frequently or for too long. 	<ul style="list-style-type: none"> Reset the temperature. Always cool down goods before storing them. Always store small quantities of food. Leave a gap between several foods allowing air flow. Close the door/drawer. Do not open the door/drawer too frequently.
It is too cold inside the appliance.	<ul style="list-style-type: none"> The temperature is set too low. The Power Freeze/Power-Cool-function is activated or is running too long. 	<ul style="list-style-type: none"> Reset the temperature. Switch off the Power Freeze/Power-Cool function
Moisture formation on the inside of the refrigerator compartment.	<ul style="list-style-type: none"> The climate is too warm and too-damp. A door/drawer of the appliance is not tightly closed. The door/drawer has been opened too frequently or for too long. Food containers or liquids are left open. 	<ul style="list-style-type: none"> Increase the temperature. Close the door/drawer. Do not open the door/drawer too frequently. Let hot foods cool to room temperature and cover food and liquids.
Moisture accumulates on the refrigerator's outside surface or between the doors/door and drawer.	<ul style="list-style-type: none"> The climate is too warm and too damp. The door/drawer is not closed tightly. The cold air in the appliance and the warm air outside it condensates. 	<ul style="list-style-type: none"> This is normal in damp climate and will change when the humidity decreases. Ensure that the door/drawer is tightly shut.
Strong ice and frost in the freezer compartment.	<ul style="list-style-type: none"> The goods were not adequately packaged. A door/drawer of the appliance is not tightly closed. The door/drawer has been opened too frequently or for too long. The door/drawer gasket is dirty, worn, cracked or mismatched. Something on the inside prevents the door/drawer to close properly. 	<ul style="list-style-type: none"> Always pack the goods well. Close the door/drawer. Do not open the door/drawer too frequently. Clean the door/drawer gasket or replace them by new ones. Reposition the shelves, door racks, or internal containers to allow the door/drawer to close.

Problem	Possible Cause	Possible Solution
The appliance makes abnormal sounds.	<ul style="list-style-type: none"> The appliance is not located on level ground. The appliance touches some object around it. 	<ul style="list-style-type: none"> Adjust the feet to level the appliance. Remove objects around the appliance.
A slight sound is to be heard similar to that of flowing water.	<ul style="list-style-type: none"> - 	<ul style="list-style-type: none"> This is normal.
You will hear an alarm beep.	<ul style="list-style-type: none"> The fridge storage compartment door is open. 	<ul style="list-style-type: none"> Close the door or silence the alarm manually.
You will hear a faint hum.	<ul style="list-style-type: none"> The anti-condensation system is working 	<ul style="list-style-type: none"> This prevents condensation and is normal
The interior lighting or cooling system does not work.	<ul style="list-style-type: none"> Mains plug is not connected in the mains socket. The power supply is not intact. The LED-lamp is out of order. 	<ul style="list-style-type: none"> Connect the mains plug. Check the electrical supply to the room. Call the local electricity company! Please call service for changing the lamp.

Power interruption

In the event of a power cut, food should remain safely cold for about 12 hours. Follow these tips during a prolonged power interruption, especially in summer:

- ▶ Open the door/drawer as few times as possible.
- ▶ Do not put additional food into the appliance during a power interruption.
- ▶ If prior notice of a power interruption is given and the interruption duration is longer than 12 hours, make some ice and put it in a container in the top of the refrigerator compartment.
- ▶ An inspection of the goods is required immediately after the interruption.
- ▶ As temperature in the refrigerator will rise during a power interruption or other failure, the storage period and edible quality of food will be reduced. Any food that defrosts should be either consumed, or cooked and refrozen (where suitable) soon afterwards in order to prevent health risks.

Memory function during power interruption

After restoration of power the appliance continues with the settings that were set before the power failure. The control panel is unlocked.

Installation

Unpacking

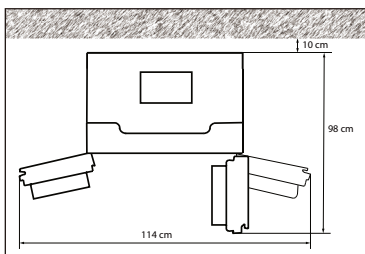


WARNING!

- ▶ The appliance is heavy. Always handle with at least two persons.
 - ▶ Keep all packaging materials out of children's reach and dispose them in an environmentally friendly manner.
-
- ▶ Take the appliance out of the packaging.
 - ▶ Remove all packaging materials.

Environmental conditions

The room temperature should always be between 10° C and 43° C, since it can influence the temperature inside the appliance and its energy consumption. Do not install the appliance near other heat-emitting appliances (ovens, refrigerators) without isolation.

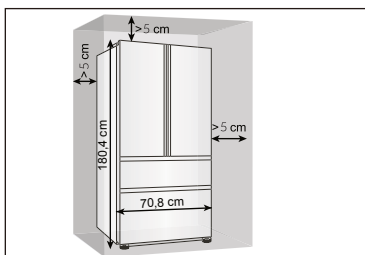


Space requirement

Required space when door is opened:

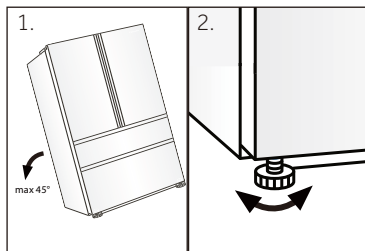
Appliance width: 114 cm

Appliance depth: 98 cm



Ventilation cross-section

To achieve sufficient ventilation of the appliance for safety reasons, the information of the required ventilation cross sections must be observed.



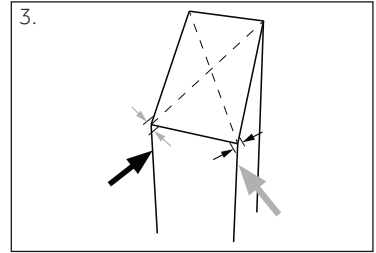
Aligning the appliance

The appliance should be placed on a flat and solid surface.

1. Tilt the refrigerator slightly backwards.
2. Set the feet to the desired level.

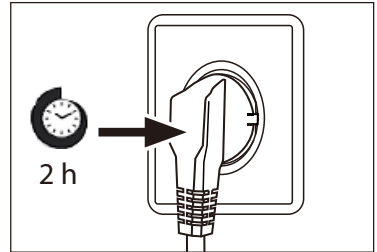
Make sure the distance to the wall on the hinge sides is at least 10 cm for the doors to open properly.

3. The stability can be checked by alternately bumping on the diagonals. The slightly swaying should be the same in both directions. Otherwise the frame can warp; possible leaking door seals are the result. A low tendency to the rear facilitates the closing of the door.



Waiting time

The maintenance-free lubrication oil is located in the capsule of the compressor. This oil can get through the closed pipe system during slanting transport. Before connecting the appliance to the power supply you have to wait at least 2 hours so that the oil runs back into the capsule.



Electrical connection

Before each connection check if:

- ▶ power supply, socket and fusing are appropriate to the rating plate.
- ▶ the power socket is earthed and no multi-plug or extension.
- ▶ the power plug and socket are strictly according.

Connect the plug to a properly installed household socket.



WARNING!

To avoid risks a damaged power cord must be replaced by the customer service (see warranty card).

Technical data

Trade mark	Haier
Model No.	HFD462FS1
Category of the model	Refrigerator-freezer
Voltage / Frequency	220V-240V~/50Hz
Energy Star	2.5 star
Frostfree system	Yes
Product group	5B
Total gross volume	462L
Total storage volume	355L
Fresh food compartment volume	270L
Freezer compartment volume	85L
Climate class	T
Rrefrigerant	R600a 65g
Insulation blowing gas	HC-C601
Dimension (DxWxH)	708x708x1804mm
Protection class	I

HFD462FS1

Haier